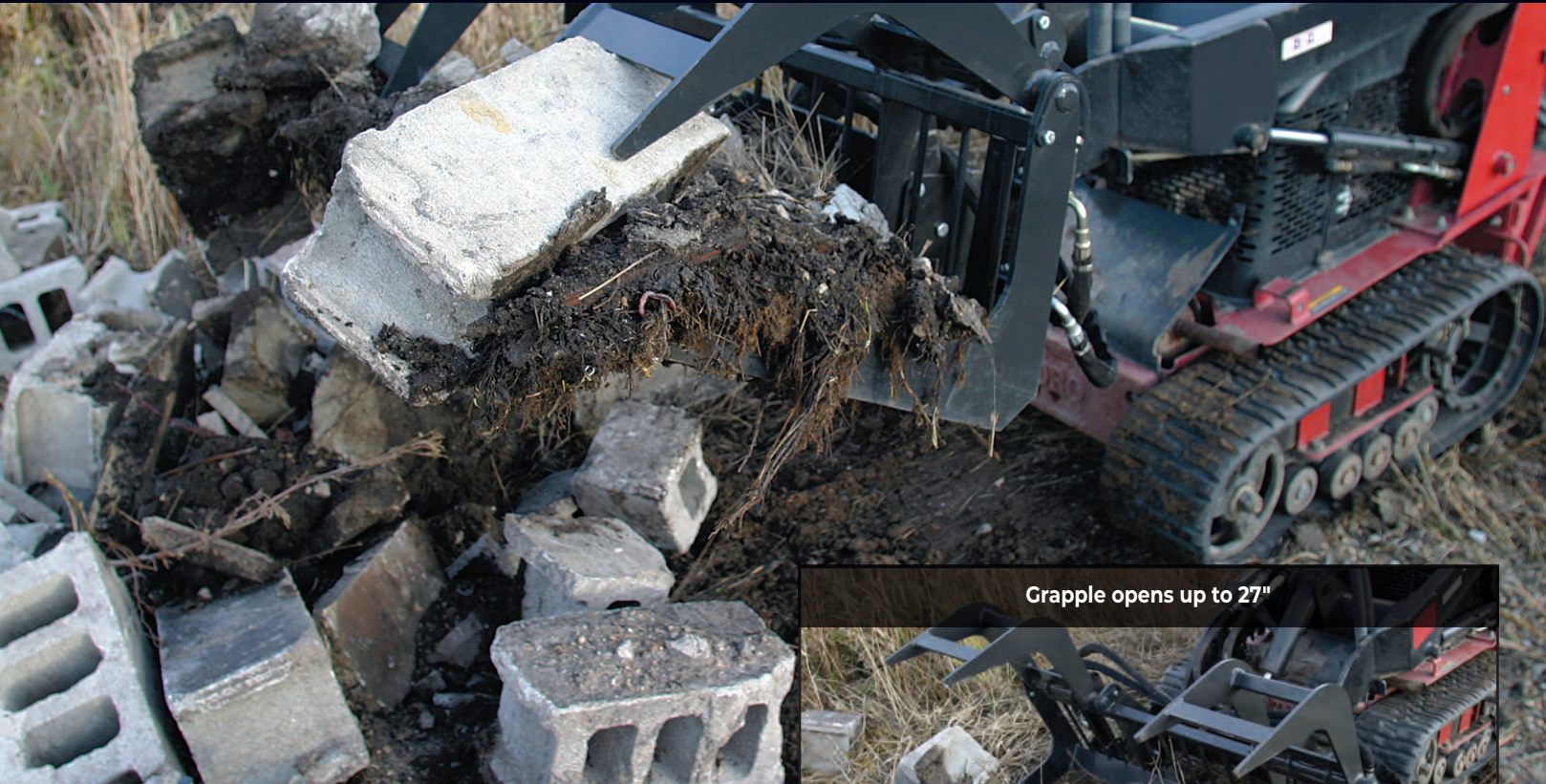


Mini Grapple Rod Bucket



Grapple opens up to 27"

The Mini Grapple Rod Bucket is the perfect piece of equipment to dig or root out and grab difficult material, while sifting out unwanted debris. Features two heavy-duty independent grapples powered by 3,000 psi hydraulic cylinders.



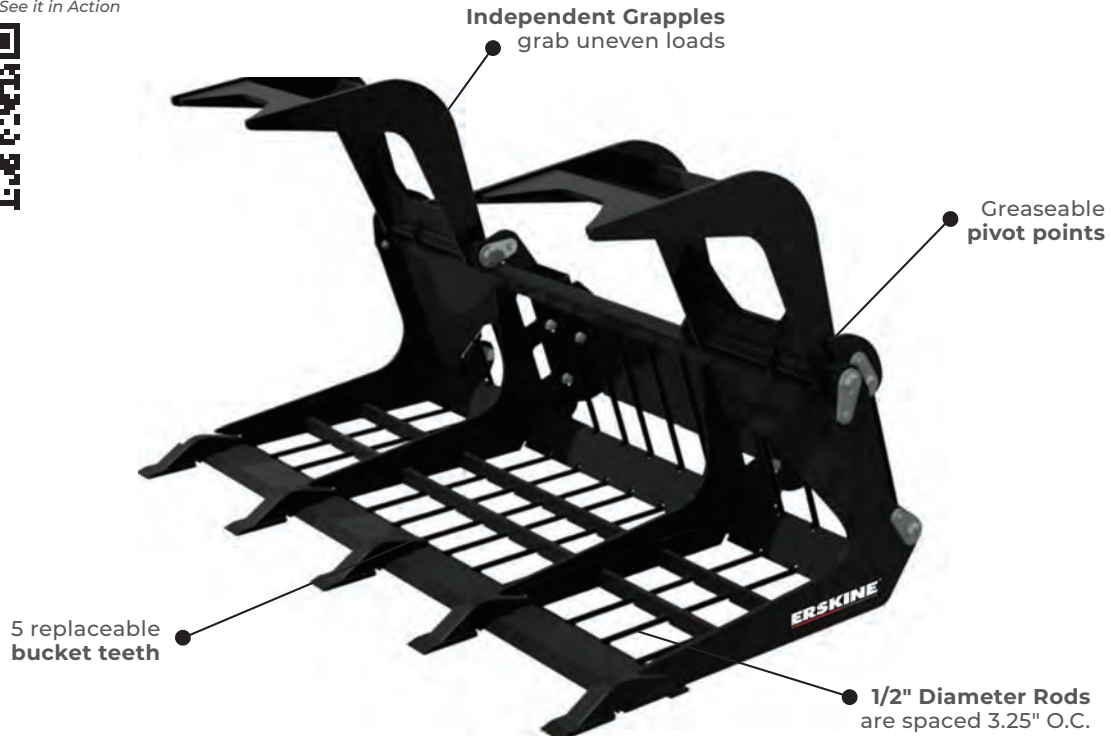
Independent grapples grab uneven loads



Clear, dig, extract, grab, and sift all-in-one tool



Take a Picture of This QR Code With Your Smart Phone to See it in Action



FEATURES & BENEFITS

- Grade 50 steel nearly 40% stronger than regular steel
- 2 - 3,000 psi hydraulic cylinders
- Rugged tool great for landscaping, demolition, roots, brush, debris, and other difficult-to-grasp material
- Designed for digging through the dirt to pick up unwanted material and leaving dirt behind
- Excellent tool for digging and pulling out materials from demolition work
- Clearing, combing, grooming and screening material

SPECIFICATIONS / OPTIONS

Model	Grapple Rod Bucket Mini
Part Number	900661
Shipping Weight	370 lb.
Overall Width	49.75"
Width Between Rods	2.75"
Width Between Lower Teeth	14.25"
Height w/Teeth Closed	20.75"
Height w/Teeth Opened	30"
Maximum Opening	27"
Hydraulic Cylinders	2" x 4" (2)
Digging Teeth Lower (Qty)	4

Mounting Kit Configurations

ASV/Terex
Bobcat
Toro / Vermeer / Boxer / Kubota / Ditch Witch / Ramrod / Kanga / Cormidi/
Avant/ MultiOne
Universal Mounting Plate (up to 1,000 lb. ROC)

Options

Factory Installed Couplers

* For more specification details please see our website www.erskineattachments.com