



**Models 620RP - 725RP - 825RP**

**Rear Pull – CAT. I**  
**3-Point Snowblower**

For  
**Compact Tractors 20-75 HP**

**Operator's Manual**  
**Set-Up Assembly**  
**Maintenance**  
**Parts Information**



**Read this Manual Before Use**

## TABLE OF CONTENTS

---

SAFETY	3-4
SERIAL NUMBER/DECAL LOCATION	5-6
SET-UP ASSEMBLY	7-12
MOUNTING INSTRUCTIONS	13-14
OPERATING INSTRUCTIONS	15-16
ROUTINE MAINTENANCE	17-21
PARTS INFORMATION	22-31
GENERAL SPECIFICATIONS	32
BOLT TORQUE INFORMATION	33
NOTES	34
WARRANTY	35

### REFERENCE INFORMATION

Write the serial number for your attachment in the spaces below. Always refer to this serial number when calling for service or parts.

Serial Number.....

### YOUR ATTACHMENTS DEALER

---

ADDRESS:

---

PHONE:

---

CONTACT:

---

**NOTE:** *Erskine Attachments LLC reserves the right to make improvements in design or changes in specifications at any time without notice and without incurring any obligations to install them on units previously sold.*

# SAFETY

---

**DO NOT** use or perform maintenance on this machine until this manual has been read and understood. In addition, read the Operation and Maintenance Manual(s) pertaining to the attachment and the attachment carrier (“Tractor”).

The user is responsible for inspecting the machine daily, and for having parts repaired or replaced when continued use of the machine would cause damage, excessive wear to other parts or make the machine unsafe for continued operation.

If an operating procedure, tool device, maintenance or work method not specifically recommended is used, you must satisfy yourself that it is safe for you and others. You must also ensure that the attachment will not be damaged or made unsafe by the procedures you choose.

Erskine Attachments LLC cannot anticipate every possible circumstance that might involve potential hazard. The safety messages found in this manual and on the machine are therefore not all inclusive.

Throughout this manual, reference may be made to the left hand (LH) or right hand (RH) side. These terms are used as viewed from the operator’s seat facing front.

The signal words **CAUTION**, **WARNING**, or **DANGER** are used to indicate hazards.

**⚠ CAUTION** Indicates a potentially hazardous situation which, if not avoided, may result in minor or moderate injury.

**⚠ WARNING** Indicates a potentially hazardous situation which, if not avoided, could result in death or serious injury.

**⚠ DANGER** Indicates a potentially hazardous situation which, if not avoided, will result in death or serious injury.

The word **IMPORTANT** is used in the text when immediate damage will occur due to improper technique or operation.

The word **NOTE** is used to convey information that is out of context with the manual text; special information such as specifications, techniques, reference information, and other information of a supplementary nature.

# SAFETY

## Improper operation can cause serious injury or death.

### Pre-operation

- This attachment is designed for blowing snow only. **NEVER** use this attachment for any other purpose.
- Read the operator's manual for the "Tractor". **NEVER** allow untrained people to operate.
- Operating instructions must be given to everyone before operating this attachment and at least once a year thereafter in accordance with OSHA regulations.
- **NEVER** exceed the maximum recommended input power or speed specifications for the attachment. Over-powering or over-speeding the attachment may cause personal injury and/or machine damage.
- Keep all shields, guards, and covers in place.
- Do not modify equipment or add attachments that are not approved by Erskine Attachments LLC.
- Use adequate safety warning lights and devices as required by local regulations. Obey all local laws and regulations regarding machine operation on public property.

### Operation

- Avoid loose fitting clothing. Clothing or hair caught in moving parts may lead to serious injury or death.
- Hydraulic connections may be hot after use. Use gloves if connecting or disconnecting after use.
- To protect the operator from hearing loss, ear protection is required unless the tractor is equipped with a noise reduction cab that meets OSHA 1910.95 standard.
- Always wear eye protection that meets z87.1 or use with an enclosure that provides similar protection.
- Check and be sure all operating controls are in neutral before starting the engine.

### Operation (continued)

- Keep people at least 100 feet away from the tractor, attachment, and discharge when in use. This attachment sends objects flying and has rotating parts. **NEVER** direct discharge toward people – rocks and debris can be thrown.
- **NEVER** operate near embankments or terrain that is so steep that rollover could occur.
- Always stay in the operator position when using the attachment.
- Before leaving the operator's position, disengage PTO drive, lower the snowblower to rest flat on the ground, stop engine, set park brake, and wait for all motion to stop.
- **NEVER** place hands in the discharge chute or clear debris while the engine is running.

### Avoid High Pressure Fluids Hazard

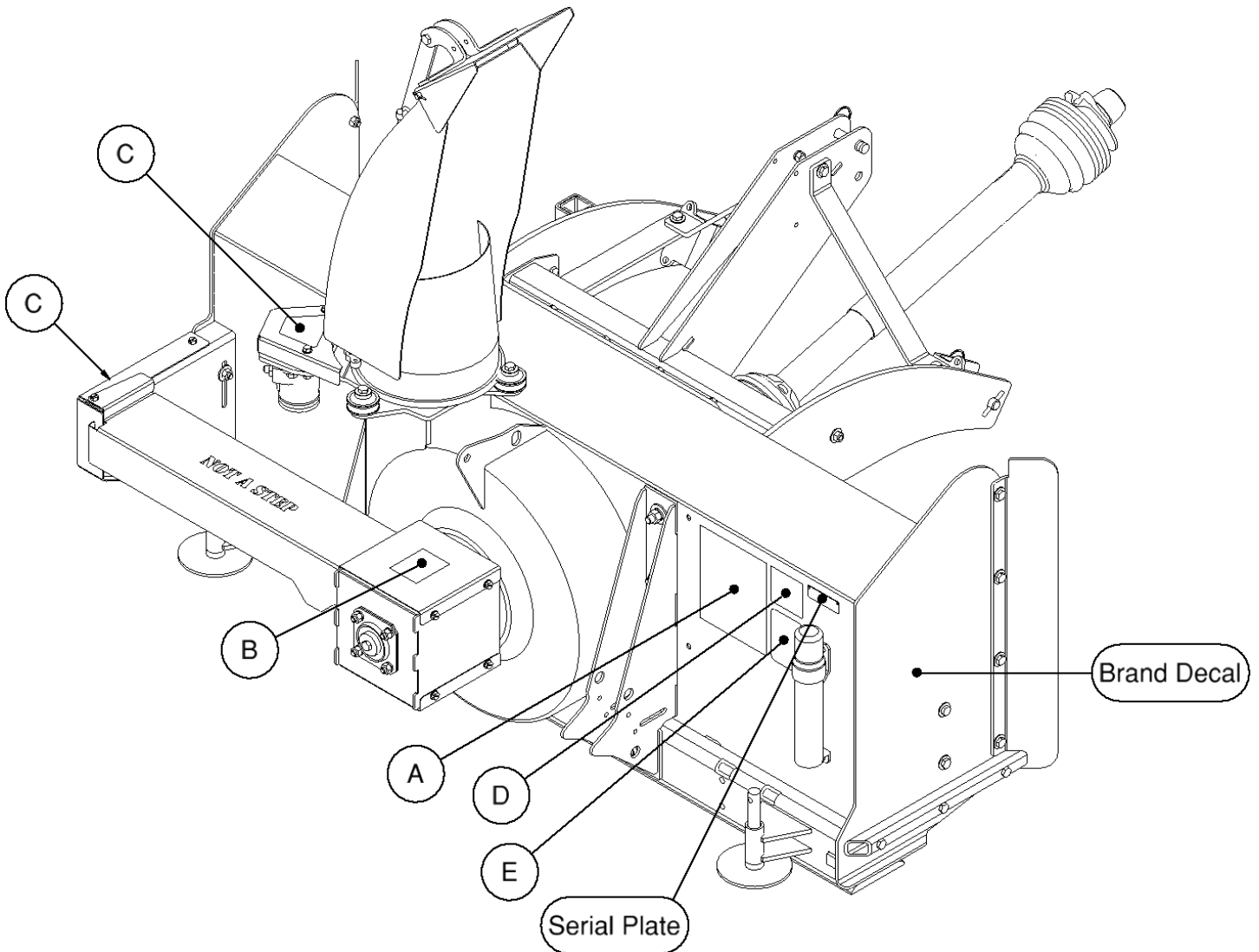


- Escaping fluid under pressure can penetrate the skin causing serious injury.
  - Avoid the hazard by relieving the pressure before disconnecting hydraulic lines.
  - Use a piece of paper or cardboard, NOT BODY PARTS, to check for suspected leaks. Wear protective gloves and safety glasses or goggles when servicing or performing maintenance on hydraulic systems.
  - If an accident occurs, see a doctor immediately. Any fluid injected into the skin must be surgically removed within a few hours or gangrene may result.
- ### Maintenance
- **NEVER** make adjustments, lubricate, clean, or perform any service on the machine while it is in operation.
  - Make sure the attachment is serviced on a daily basis. Improper maintenance can cause serious injury or death in addition to damage to the attachment and/or your equipment.

# SERIAL NUMBER AND SAFETY DECAL LOCATIONS

## Serial Number Location:

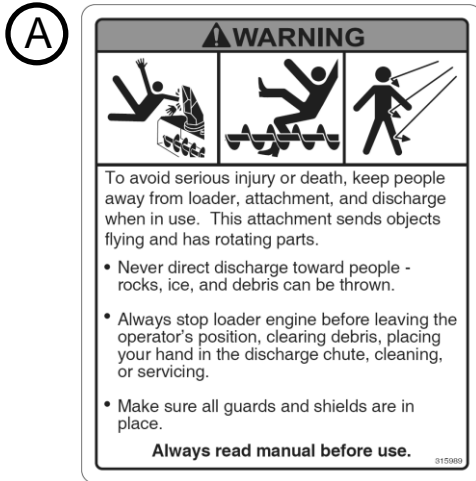
It is important to refer to the serial number of the attachment when making repairs or ordering parts. Early or later models (identification made by serial number) may use different parts, or it may be necessary to use different procedures in doing a specific operation.



# SERIAL NUMBER AND SAFETY DECAL LOCATIONS

## Safety Decals Locations:

The locations of the safety decals are shown. If these decals are missing, damaged, or painted over they must be replaced. Call Erskine Attachments LLC (218-435-4045) for replacement decals.



**Part number: 310820**

**Location:** Back right side of snowblower body

**Quantity: 1**



**Part number: 201415**

**Location:** Top of gear drive cover

**Quantity: 1**



**Part number: 103206**

**Location:** On auger drive chain cover & optional chute rotation chain cover

**Quantity: 1 standard, or 2 w/ opt hyd chute rotate**

**(D)**

REARPULL BLOWER PART NUMBERS		
PUNCH HERE	PMI	MODEL
▶	920100	620RP
▶	920102	725RP
▶	920104	825RP
REAR MOUNT BLOWER PART NUMBERS		
▶	920106	520RM
▶	920107	620RM
▶	920109	725RM
▶	920111	825RM
▶	920112	925RM
▶	920113	965RM
▶	920114	1085RM

**Part number: 300794**

**Location:** Back right side of snowblower body

**Quantity: 1**



**Part number: 200001**

**Location:** Back right side of snowblower body

**Quantity: 1 w/ opt hyd chute rotate/deflector**

## Small Brand Decal

**Location:** On each side of snowblower body

**Quantity: 2**

## SET-UP ASSEMBLY

### Manual Rotation Discharge Chute Installation

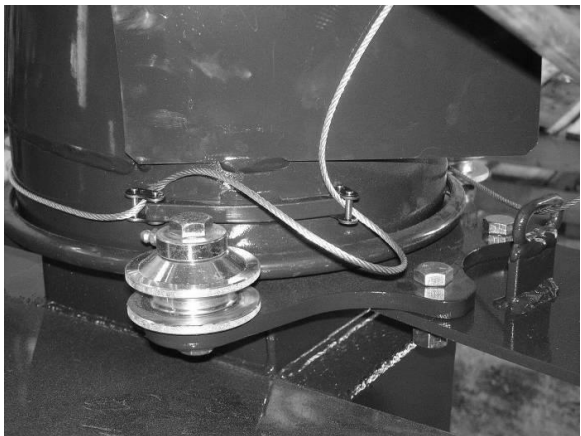
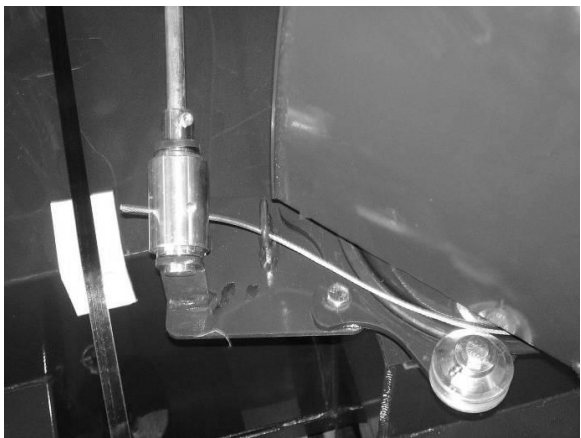
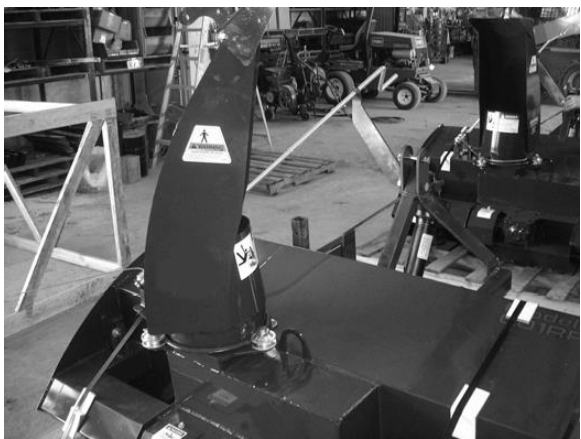
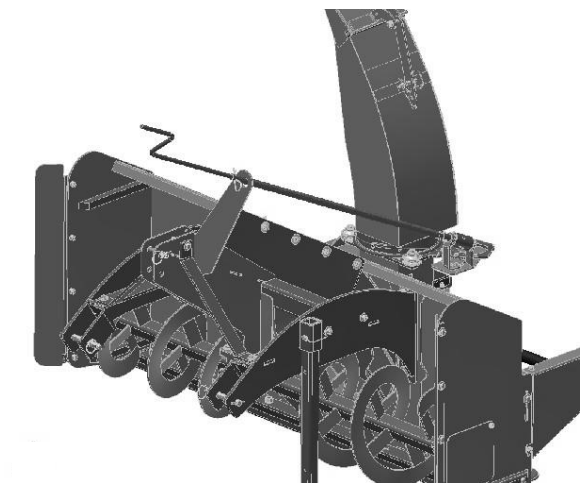
1. Bolt the hand crank support bracket to the upper arm, and insert the crank tube. Bolt the lower end of the crank tube to the spool. The crank handle length is adjustable. Start with the crank in the shortest position until the snowblower is mounted to the tractor for the first time.

**IMPORTANT:** Make sure the crank handle will not contact the operator or any part of the tractor through the entire range of motion.

2. Remove one of the roller guides from the snowblower housing by removing the bolt securing the roller guide.
3. After unpacking the chute, slip the chute into the grooves on the two remaining roller guides.
4. Reinstall the roller guide and bushing with bolt and lock nut.

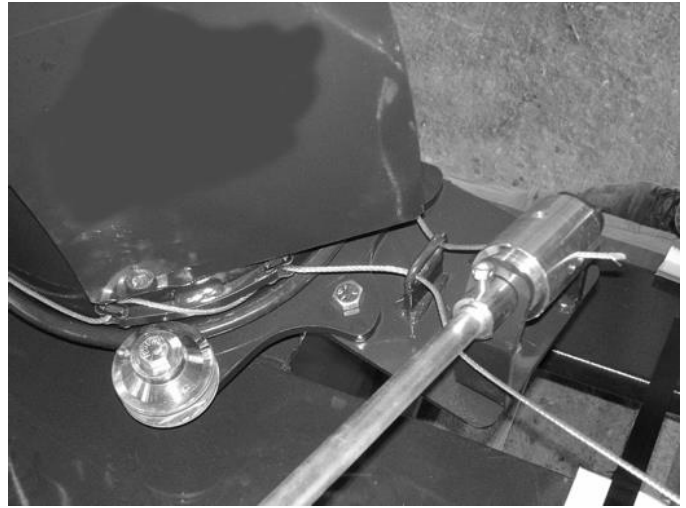
**IMPORTANT:** Tighten each roller guide lock nut to 75 ft.-lbs.

5. Rotate the chute so it is facing the front right corner of the snowblower body.
6. Feed one end of the cable through the rear hole of the spool, through the cable guide link, and around the back of the chute as shown. Tighten the set screw to lock the cable in place, leaving a short tail sticking out.
7. Run the cable backwards through the chain links in such a way that the cable will bind when tightened. Method can vary, as long as the cable binds tightly to the chute when tightened.

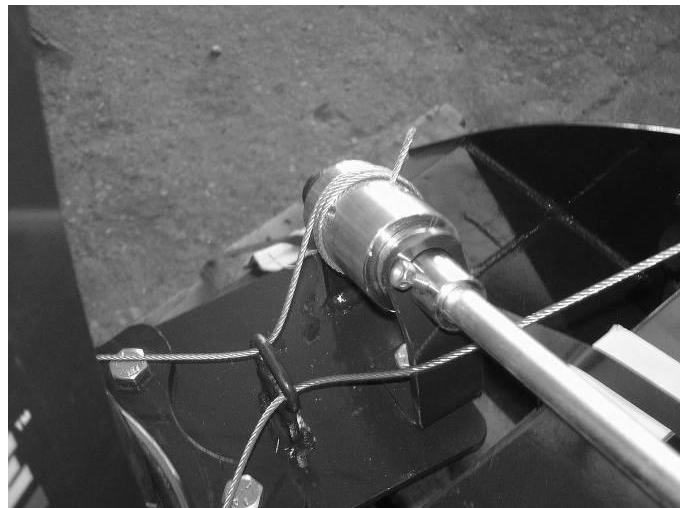


## SET-UP ASSEMBLY

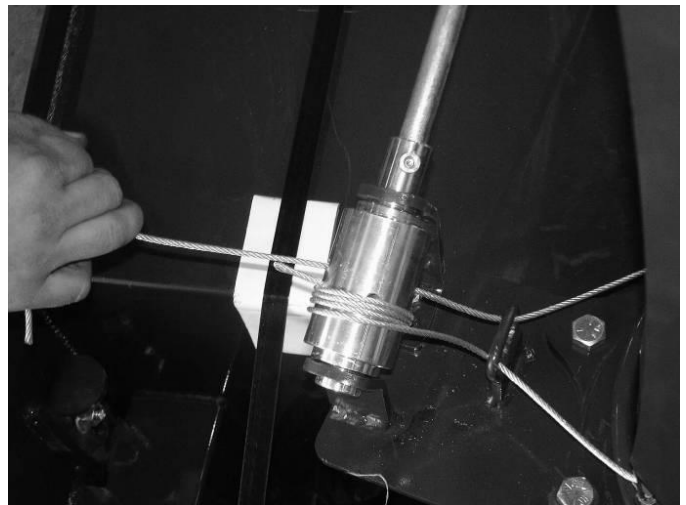
8. Thread the cable back through the cable guide.



9. Turn the crank handle clockwise to wind up the cable on the lower part of the spool. Keep tension on the loose end of the cable while cranking so that the cable on the spool doesn't unwind. Stop cranking when the chute faces the front left corner of the snowblower body. The chute should rotate clockwise, as viewed from above, to reach this position. The position of the chute does not need to be exact, and can be varied to help with the next step.



10. Thread the remaining end of the cable through the spool. The crank position can be changed slightly to aid in threading the cable and tightening the set screw. Make sure the cable on the spool remains tight. Pull all the slack out of the cable before tightening the set screw. Trim the cable ends as required.





## SET-UP ASSEMBLY



### Hydraulic Rotation Discharge Chute Installation

1. Remove one of the roller guides from the snowblower housing by removing the bolt securing the roller guide.
2. Remove the chain cover from the snowblower housing by removing the two bolts securing the cover.
3. After unpacking the chute, slip the chute into the grooves on the two remaining chute guides.
4. Reinstall the roller guide and bushing with bolt and lock nut.

**IMPORTANT:** Tighten each roller guide lock nut to 75 ft.-lbs.

5. Rotate the chute to the straightforward position.
6. Loosen the motor mount bolts, and push the motor all the way toward the chute.
7. Install the No. 40 roller chain around the motor sprocket.
8. Pull the motor away from the chute until all slack is removed from the roller chain, and tighten the motor mount bolts to secure the motor in place.

**IMPORTANT:** Do not overtighten roller chains. Tighten only enough to remove slack.

9. Reinstall the chain cover and two bolts.

### **⚠ WARNING**

**Do not operate the snowblower without the chain shield in place. Moving parts may cause injury or death. Always replace guard after servicing.**



## SET-UP ASSEMBLY

### Mounting and Adjusting the Snowblower

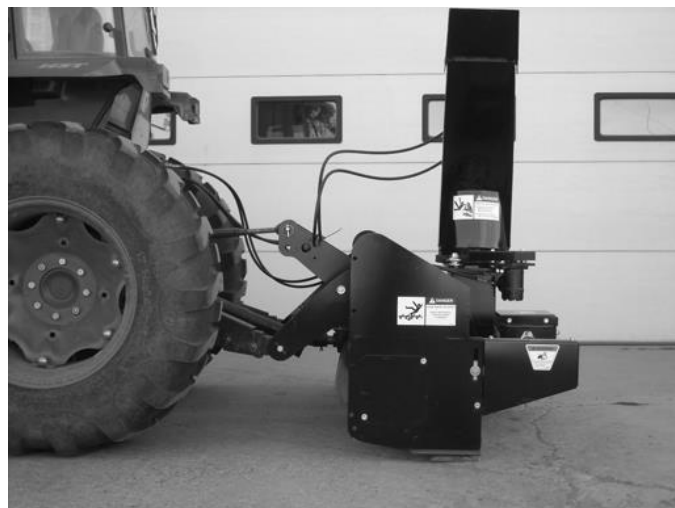
1. Install a 3/8" x 2" key and the keyed yoke of the driveline on the snowblower gearbox shaft. Secure with a 3/8" grade 5 bolt and lock nut, and tighten the set screw.

**⚠ WARNING** Make sure the PTO master shield is secured in its operating position. Never operate the snowblower with missing PTO shield.

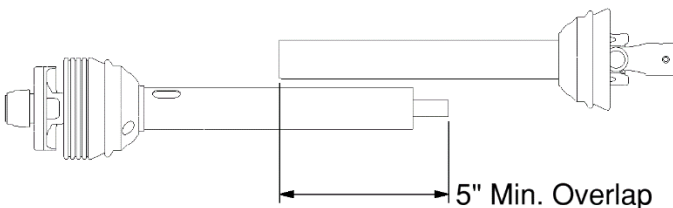
2. The mounting arms of the 620RP, 725RP, and 825RP are designed to be used on the standard Category I 3-point hitch. They are also quick hitch compatible. Be sure to pay extra attention to the driveline when using the snowblower with a quick hitch. Make sure there is proper engagement throughout the entire range of motion.
3. Mount the snowblower to the tractor (see "Mounting Instructions" on pages 13-14).
4. The snowblower may need to be tilted rearward somewhat in order to create a straighter driveline angle from the tractor PTO shaft to the snowblower gearbox. This can be accomplished by lengthening the tractor's 3-point top link (refer to the tractor's operator's manual for top link adjustment instructions). The degree of backward tilt depends on the tractor size and PTO location.

Example: The higher the tractor PTO shaft is above the ground, the more snowblower backward tilt is required.

**IMPORTANT:** It is extremely important to keep the driveline angle as straight as possible while the snowblower is under load, as this reduces heat buildup and the chance of bearing failure in the driveline U-joints.



## SET-UP ASSEMBLY



5. After the snowblower backward tilt is determined and set, the driveline telescoping length must be checked.
  6. With the snowblower resting on the ground, connect the driveline to the tractor PTO shaft and mark the location of overlap on the driveline. Check to make sure that there is sufficient clearance between the driveline and the tractor drawbar. If there is not enough clearance, refer to the tractor's operator's manual for instructions on shortening or removing the tractor drawbar.
  7. Disconnect the driveline from the tractor PTO shaft and slide the two driveline halves apart. Using the mark on the shield as a reference, check to be sure there is at least 5" of overlap between the driveline shaft and the slide. If there is less than 5" of overlap, contact your dealer.
  8. Start the tractor and carefully raise the 3-point arms to lift the snowblower to the transport position. Align the two halves of the driveline with each other, and the yoke of the outer driveline half with the tractor PTO shaft to make sure that the driveline will not bottom out in the fully raised position.
- IMPORTANT:** Severe damage to the tractor may occur if the driveline bottoms out while raising the snowblower. If the driveline bottoms out, it may need to be shortened.
9. Once certain that the driveline will telescope properly, lower the snowblower to the ground, reassemble the driveline, and reconnect the driveline to the tractor PTO shaft.

10. Connect the chute rotator hoses and chute deflector hoses (if snowblower is equipped with these hydraulic options) to the tractor's remote hydraulic couplers. Make sure the hoses are routed so that they will not catch on any part of the tractor or snowblower or contact any moving parts during operation. Check hose routing through the full range of intended motion before operating the snowblower.

**IMPORTANT:** Hose routing is the responsibility of the owner and/or operator. Pinched or stretched hoses are not covered under warranty.

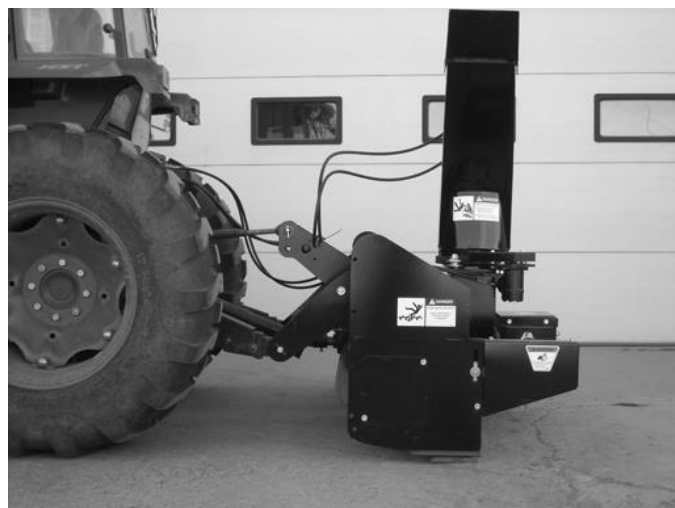
## SET-UP ASSEMBLY

---

11. With the operator in the seat of the tractor and the seat belt fastened, start the engine. With the engine at an idle, check that the hydraulic functions are working properly by rotating the chute all the way in both directions and/or angling the chute deflector all the way up and down, depending on which hydraulic options are equipped on the snowblower.
12. With the engine at an idle, engage the tractor PTO drive to start the snowblower turning. Slowly increase the engine speed to working RPM. If there is any excessive vibration or noise while running the snowblower, throttle the engine down to an idle, disengage the PTO drive, shut down the engine, engage the park brake, and wait for all motion to stop, then exit the tractor and inspect the snowblower for the cause of the vibration or noise. Adjust or replace parts as needed.

**IMPORTANT:** Do not engage or disengage the PTO drive at full throttle.

13. Set-up assembly is now complete, and the snowblower is ready for operation. See the “Mounting Instructions” and “Operating Instructions” sections of this manual for proper mounting and operating techniques.





# MOUNTING INSTRUCTIONS

After the initial set-up is complete, use the following instructions to mount the snowblower to the tractor.



1. With the operator in the seat of the tractor and the seat belt fastened, start the engine. Drive the tractor to the front of the snowblower and align the 3-point arms with the snowblower mounting pins. Stop the engine and engage the park brake.
2. Slide the tug arms over the lower lift pins and secure with lynch pins. Install the top link pin and secure with lynch pin.



3. Connect the snowblower driveline to the tractor PTO shaft. Be sure that the retaining pin snaps into position on the PTO shaft.

**⚠ WARNING** All appropriate hitch pins and PTO driveline must be locked into place. Failure to secure PTO shaft or pins can allow the attachment to disconnect from the tractor and cause injury or death.

**⚠ WARNING** The tractor must be equipped with a working PTO shield. To avoid serious injury or death, never adjust or move the driveline when connected to the tractor and the tractor's PTO drive is engaged.

**IMPORTANT:** Maximum driveline extension is 9" for the 620RP, and 17" for the 725RP and 825RP. This allows for a minimum overlap of 5". Extending beyond these lengths could allow the driveline to separate and lead to equipment damage. Also check to make sure the driveline does not bottom out when raising the snowblower, or severe damage to the tractor may occur.

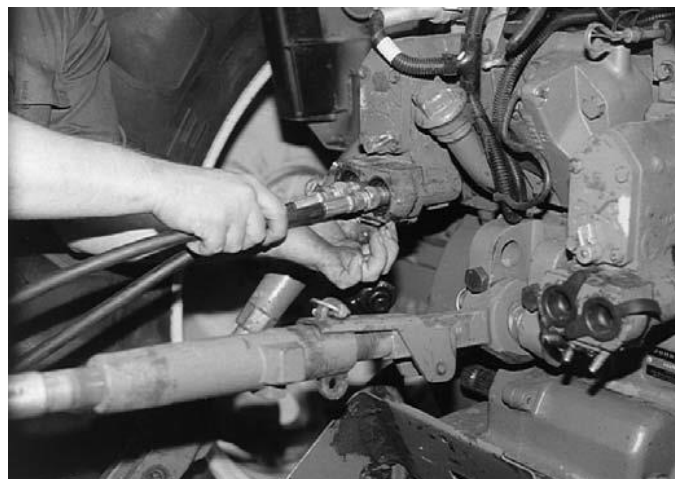
## MOUNTING INSTRUCTIONS

---

4. If the snowblower is equipped with the hydraulic chute rotation and/or hydraulic chute deflector, connect the snowblower chute rotation and/or deflector hoses to the tractor's remote hydraulic couplers (see the tractor's operator's manual for remote hydraulic coupler locations and connection instructions). Make sure hoses are routed so that they will not catch on any part of the tractor or snowblower or contact any moving parts during operation. Check hose routing through the full range of intended motion before operating the snowblower.

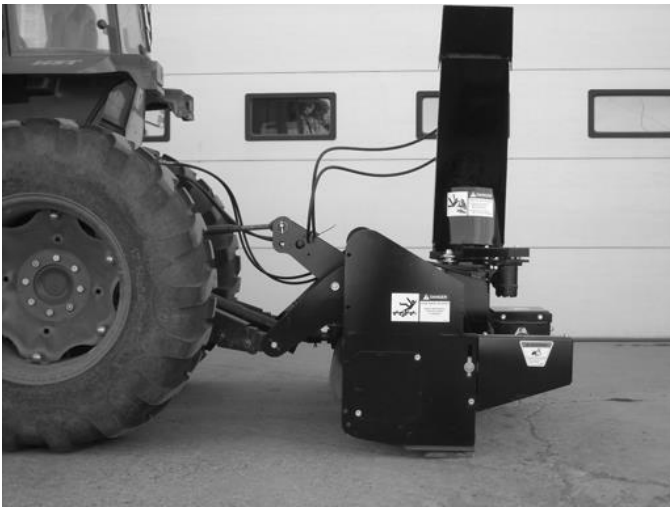
**IMPORTANT:** Wipe the ends of the hydraulic couplers (both lead and tractor) with a rag to remove any possible contamination. Contamination can cause hydraulic components to fail and is not covered under warranty.

**IMPORTANT:** Hose routing is the responsibility of the owner and/or operator. Pinched or stretched hoses are not covered under warranty.



5. Mounting is now complete, and the snowblower is ready for operation. Use the reverse order of these instructions to dismount the snowblower from the tractor.

# OPERATING INSTRUCTIONS



**⚠ WARNING** Know your work area. Avoid obstructions and debris.

1. Before starting the tractor engine, check to see that the snowblower is nearly level to the ground. This creates a straighter driveline angle and can be accomplished by adjusting the length of the tractor's 3-point top link (refer to the tractor's operator's manual for top link adjustment instructions).
2. Skid shoes are used to control the cutting height. To adjust the skid shoe height: raise the snowblower off of the ground and block it in position, remove the skid shoe retaining pins, move spacer washers above or below the skid shoe mount bushings to set the desired cutting height, and reinstall the retaining pins. Make sure both skid shoes are set to the same height for the snowblower to operate properly.



**⚠ WARNING** To avoid being crushed, never work on raised attachment without using additional support blocks or jack stands.

3. Adjust the chute to control snow discharge angle and distance. To adjust: remove the pin from the bottom of the deflector link, move the deflector to the desired angle, and reinstall the pin through the chute and deflector link.

**NOTE:** If the snowblower is equipped with hydraulic chute deflection, the tractor remote hydraulic control lever is used to adjust the deflection angle.

**NOTE:** Snowblower will achieve maximum casting distance with the deflector in the highest position (as shown).



## OPERATING INSTRUCTIONS

---

4. With the operator in the operator's position, check to be sure all operating controls are in neutral and start the engine.

**⚠ WARNING** Keep people at least 100 feet away from the tractor, snowblower, and discharge when in use. This attachment sends objects flying and has rotating parts. Never direct discharge toward people – rocks and debris can be thrown.

5. With the engine idling, check the hydraulic remote functions for the snowblower discharge chute rotator and discharge chute deflector (if optional hydraulic rotation and/or deflection kit is equipped).
6. Rotate the chute toward a clear area.
7. Lower the snowblower to rest on the skid shoes.
8. With the engine at an **idle**, engage the tractor PTO drive (see tractor's operator's manual).

**IMPORTANT:** Do not engage or disengage the PTO drive at full throttle.

**IMPORTANT:** Take special care if using an imported tractor. Some tractors have multi-speed PTO systems. The snowblower must be operated with a PTO speed of 540 rpm. Never exceed the factory recommended PTO speed for the snowblower.

9. Increase the tractor engine speed to full throttle. Always operate the snowblower with the engine at full throttle for maximum efficiency.

10. Select the lowest tractor forward gear, and slowly drive the tractor forward into the snow. Blow snow toward a clear area. When possible, direct snow discharge downwind.

**IMPORTANT:** Do not operate the snowblower if excessive vibration is present. Serious damage can occur. Check auger and fan.

**NOTE:** The tractor forward speed can be varied according to snow depth and density. Always operate the attachment with the loader engine at full throttle for maximum snowblower efficiency.

**NOTE:** If the surface to be cleared has very dense or compacted snow, the snowblower should be resting on the skid shoes during operation, with the 3-point arms fully lowered. This will allow the snowblower to float along the contour of the ground. If operating in soft snow conditions, the snowblower can be carried slightly above the ground with the 3-point arms to minimize gouging.



## ROUTINE MAINTENANCE

**⚠ WARNING** Lower the attachment to rest flat on the ground, disengage the PTO drive, shut down the engine, relieve hydraulic pressure to the attachment, set the park brake, and wait for all motion to stop before leaving the operator's position or approaching the attachment to perform service of any kind.

It is the operator's responsibility to make daily inspections of the tractor and attachment for damage, loose bolts, fluid leaks, or anything else that could cause a potential service or safety problem. Preventive maintenance is the easiest and least expensive type of maintenance.

**IMPORTANT:** Bolts and set screws can loosen after initial usage. After the first hour of operation check all bolts and set screws. Continue to check for loose hardware every **10 hours** of operation.

## LUBRICATION

### Lubrication Legend



Multipurpose spray lube



No. 2 Lithium base gun grease



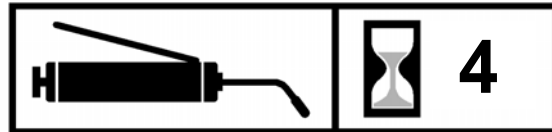
Clean engine oil



Intervals at which lubrication is required

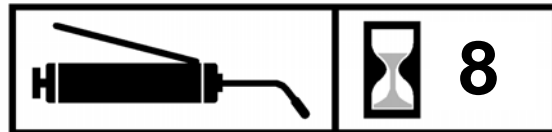


Use No. 2 lithium base grease gun when lubricating all snowblower grease fittings.

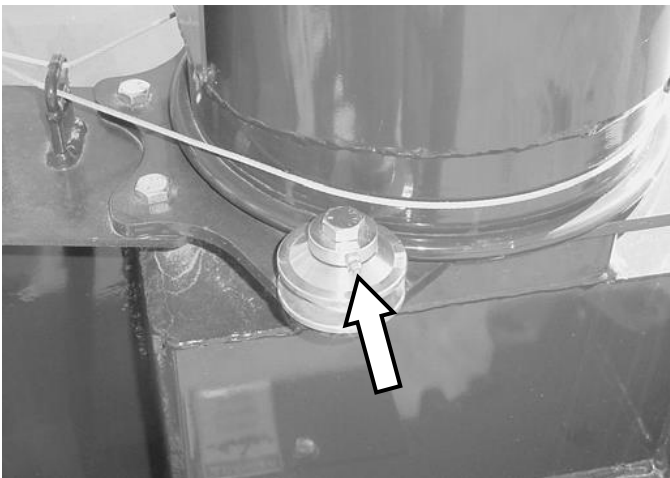


Grease the front and rear PTO driveshaft U-joints and telescoping slide every **4 hours** of operation.

**IMPORTANT:** Grease the telescoping slide with the driveline fully compressed.



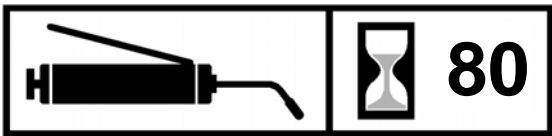
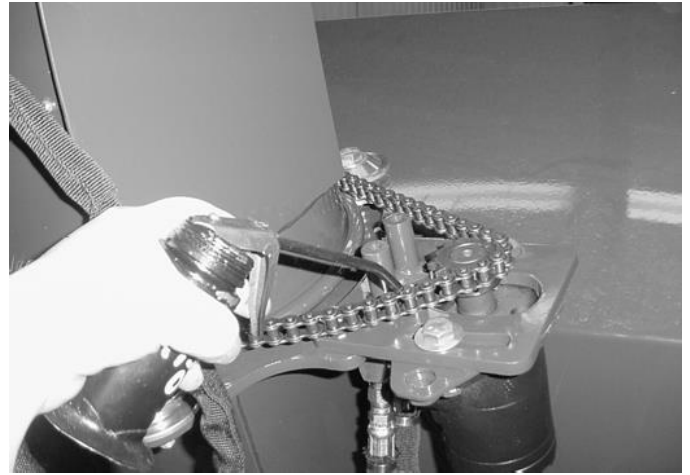
Grease the three chute roller guides every **8 hours** of operation.



## ROUTINE MAINTENANCE

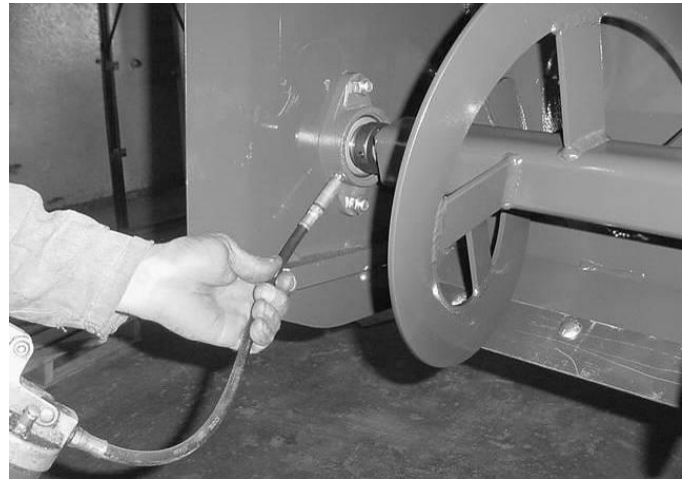


Use clean engine oil or roller chain lubricant to lubricate the auger drive chain and the chute rotator chain (if equipped) every **40 hours** of operation.



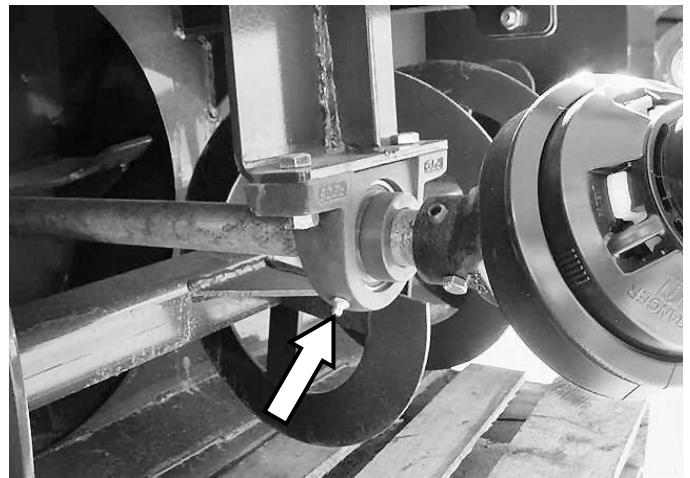
Grease the bearing on each end of the auger every **80 hours** of operation.

**IMPORTANT:** Do not over-grease auger bearings. Only add **two pumps** of grease every greasing interval.

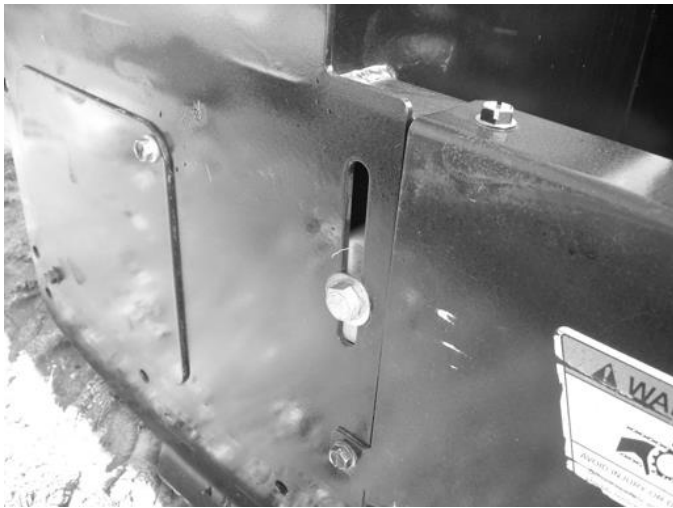


Grease the bearing on the front end of the fan shaft every **80 hours** of operation.

**IMPORTANT:** Do not over-grease fan shaft bearing. Only add **two pumps** of grease every greasing interval.



## ROUTINE MAINTENANCE



### Auger Drive Chain Adjustment

A properly tensioned auger drive chain will extend the life of the roller chain. To adjust the chain tension:

1. Loosen the locking bolt.
2. Push the chain tensioner bracket down until all slack is removed from the chain.

**IMPORTANT:** Do not overtighten roller chain. Tighten only enough to remove slack.

3. Retighten the locking bolt to secure the tensioner bracket in place.



### Maintenance for Long-Term Storage

After the snow season is over, it is recommended to grease the auger drive gears to prevent excessive corrosion.

1. Remove the top cover.
2. Inspect the gears for damage or excessive wear.
3. Apply a generous amount of grease to the gear teeth.
4. Turn the auger over by hand to distribute the grease evenly over all gear teeth.



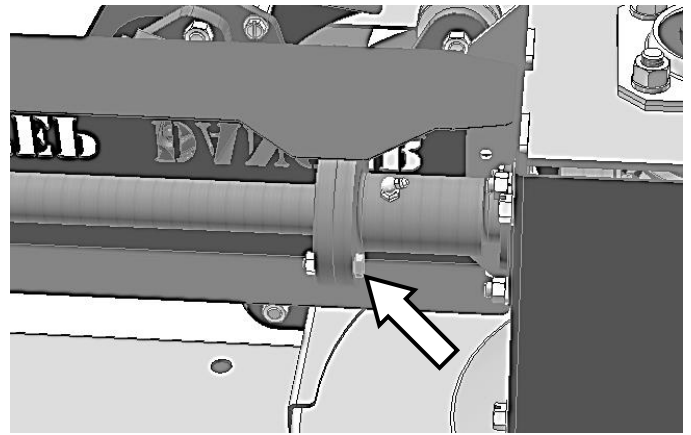
## ROUTINE MAINTENANCE

### Auger Shaft Shear Coupler

The auger drive is shear bolt protected in the event that the auger should strike a solid object. The auger driveshaft shear coupler is located on the left side of the gearbox, under the shield. If sheared, align the holes in the coupler flange and install a 5/16" x 1-1/4" NC grade 2 bolt and lock nut.

**IMPORTANT:** Shear bolts are intended to protect the snowblower from severe damage by shearing in the event of a solid object strike. Never use grade 5 or grade 8 bolts in place of shear bolts.

If the shaft and coupler need to be separated, unscrew the grease zerk and release the retaining steel ball through the grease zerk hole. Reverse these steps to reassemble.



### PTO Driveline Shear Coupler

The PTO driveline shear coupler is located on the tractor end of the driveline.

1. Align the holes in the coupler flange.
2. Install a 3/8" x 1" NC grade 2 bolt and lock nut.

**IMPORTANT:** Shear bolts are intended to protect the snowblower from severe damage by shearing in the event of a solid object strike. A grade 5 bolt may be substituted if constant shearing occurs. Never use grade 8 bolts in place of shear bolts.

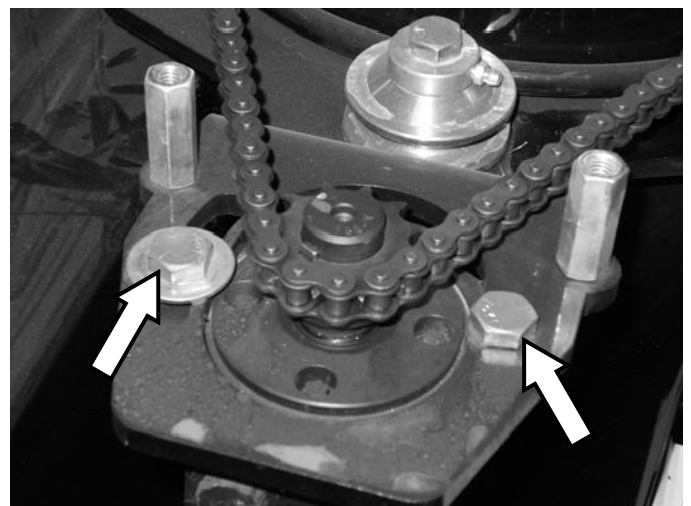


### Discharge Chute Rotator Adjustment (Optional Hydraulic Rotation)

1. Remove the two bolts securing the chain cover to the snowblower, and remove the cover.
2. Loosen both motor mount bolts. Pull the motor mount away from the chute to remove all slack from the roller chain.

**IMPORTANT:** Do not overtighten roller chains. Tighten only enough to remove slack.

3. Tighten the motor mount bolts to secure the motor mount in place.
4. Reinstall the chain cover.

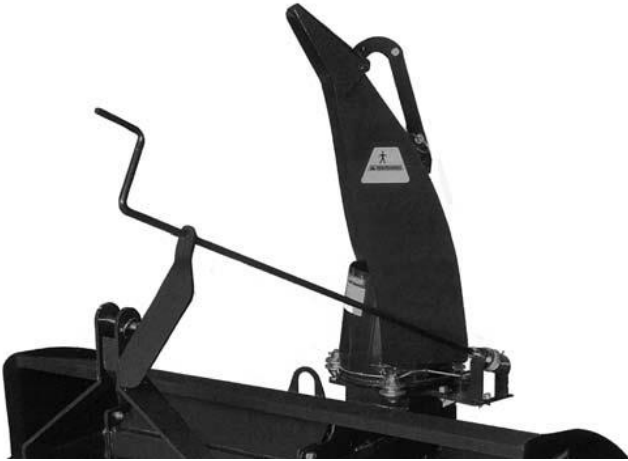


## ROUTINE MAINTENANCE

---

### Discharge Chute Adjustment (Manual Rotation)

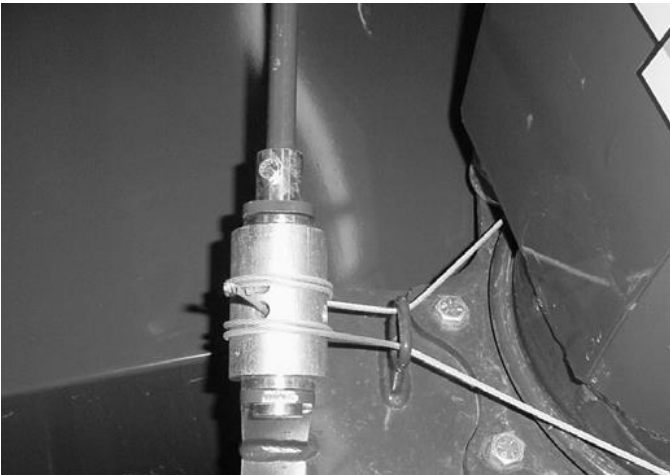
1. Rotate the chute all the way to the side needing adjustment.



2. Loosen the set screw holding the cable in place.



3. Using pliers, pull the cable through the hole until the cable is tight.

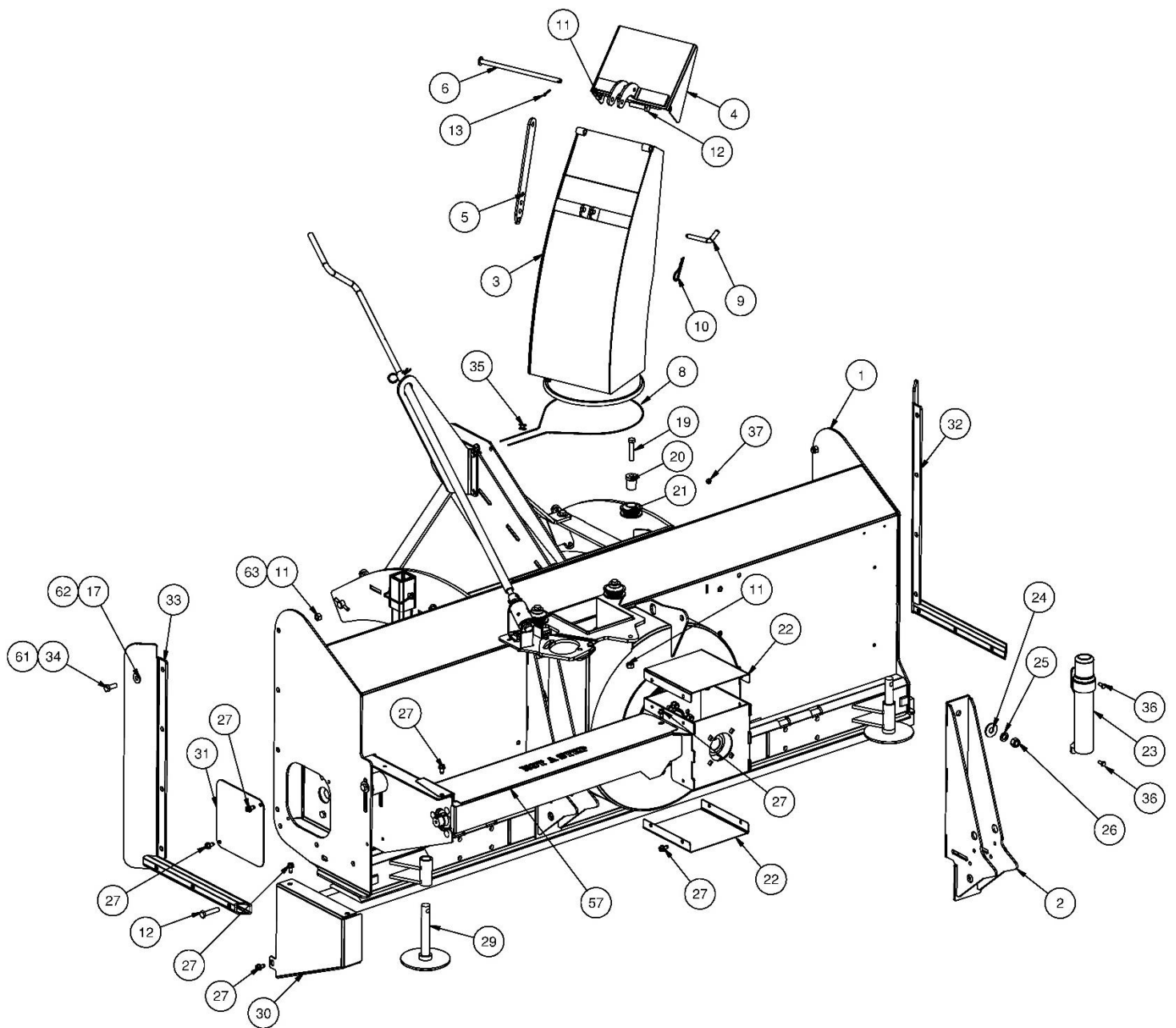


4. Tighten the set screw to lock the cable in place.

## PARTS INFORMATION

ITEM	QTY	PART NO.	DESCRIPTION	STOCK NO.
1	1	310801	BODY T20 X 60 CCW W/A	620 REARPULL MODEL
	1	310802	BODY T24 X 72 CCW W/A	725 REARPULL MODEL
	1	310803	BODY T24 X 84 CCW W/A	825 REARPULL MODEL
2	2	310821	MOUNT REARPULL T20 W/A	620 MODEL ONLY
	2	311443	MOUNT REARPULL T24 W/A	725 & 825 MODELS ONLY
3	1	310878	CHUTE 11" TRP W/A	LINK ON LEFT HAND SIDE
4	1	315067	CHUTE DEFLECTOR	
5	1	315087	LINKAGE DEFLECTOR PAINTED	
6	1	315124	PIN DEFLECTOR W/A	
8	1	310580	CABLE 1/8" X 87"	
9	1	102687	PIN DEFLT LINKAGE 1/2 X 2 3/8	
10	1	104410	PIN CLIP #9 5/32 X 3-1/16	
11	4	37214	NUT HEX LOCK 1/2 NC	620 MODEL ONLY
	10	37214	NUT HEX LOCK 1/2 NC	WITH 620 OPT WING PKG (330745)
	18	37214	NUT HEX LOCK 1/2 NC	725 & 825 MODELS ONLY
12	1	13212	BOLT HEX 1/2 X 2 1/4 NC GR 5	620 MODEL ONLY
	7	13212	BOLT HEX 1/2 X 2-1/4 NC GR 5	WITH 620 OPT WING PKG (330745)
	7	13212	BOLT HEX 1/2 X 2 1/4 NC GR 5	725 & 825 MODELS ONLY
13	1	65076	PIN COTTER 1/8 X 1	
17	8	33010	WASHER FLAT 7/16	725 & 825 MODELS ONLY
19	3	13213	BOLT HEX	1/2 X 2 1/2 NC GR 5
20	3	315155	ROLLER GREASABLE BUSHING	
21	3	315020	ROLLER CHUTE	
22	2	310860	SHIELD GEARS PAINTED	
23	1	330864	HOLDER MANUAL CANISTER 12.5 X 2.25	
24	8	33016	WASHER FLAT	5/8"
25	8	33630	WASHER LOCK	5/8"
26	8	36114	NUT HEX	FULL 5/8 NC
27	14	32467	BOLT FLG THRD RLNG	3/8 X 3/4 NC
29	2	100301	SKID SHOE	
30	1	310844	SHIELD AUGER CHAIN T20 PNT	620 MODEL ONLY
	1	311428	SHIELD AUGER CHAIN T24 PNT	725 & 825 MODELS ONLY
31	1	310868	SHIELD SPROCKET PAINTED	
32	1	310873	WING T24 RH W/A	725 & 825 MODELS ONLY
	1	330742	WING 620 RH W/A	WITH 620 OPT WING PKG (330745)
33	1	310870	WING T24 LH W/A	725 & 825 MODELS ONLY
	1	330743	WING 620 LH W/A	WITH 620 OPT WING PKG (330745)
34	8	13207	BOLT HEX 1/2 X 1 1/4 NC GR 5	725 & 825 MODELS ONLY
35	2	103622	CHAIN CONN NO 40	OBSOLETE
36	2	13053	BOLT HEX	5/16 X 3/4 NC GR 5
37	2	37211	NUT REV LOCK	5/16 NC GR 5
57	1	330638	SHIELD AUG SHAFT 60 PNT	REPLACED 311432 OCT 2016
	1	330639	SHIELD AUG SHAFT 72 PNT	REPLACED 311434 OCT 2016
	1	330642	SHIELD AUG SHAFT 84 PNT	REPLACED 311436 OCT 2016
61	8	13107	BOLT 3/8 X 1-1/4 NC GR 5	WITH 620 OPT WING PKG (330745)
62	8	33008	WASHER FLAT 3/8	WITH 620 OPT WING PKG (330745)
63	8	37212	NUT HEX LOCK 3/8 NC	WITH 620 OPT WING PKG (330745)

# PARTS INFORMATION

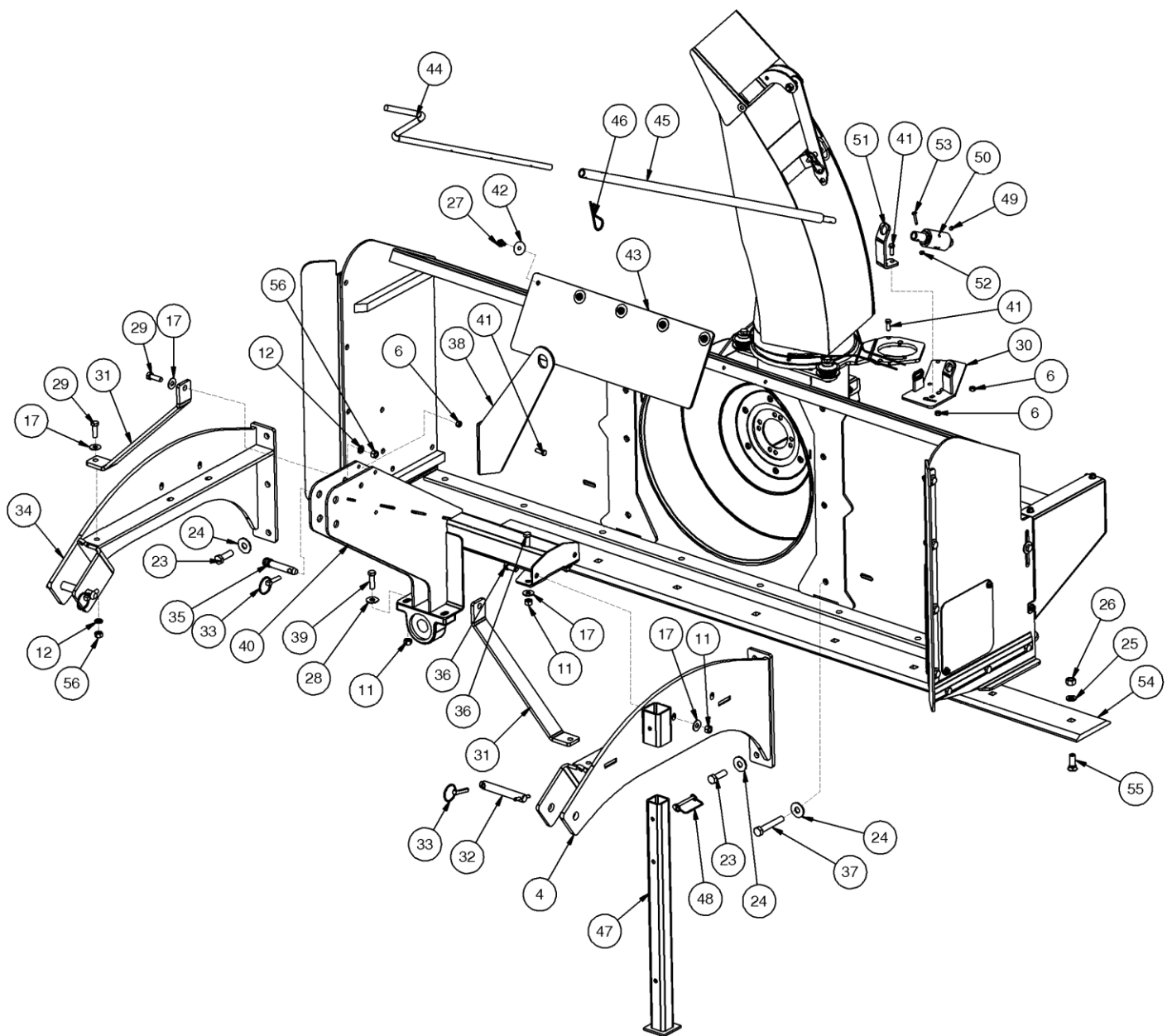


## 620/725/825 REARPULL PARTS INFORMATION

ITEM	QTY	PART NO.	DESCRIPTION	STOCK NO.
4	1	310827	FRAME ARM REARPULL T20LH W/A	<b>620 MODEL ONLY</b>
	1	311419	FRAME ARM REARPULL T24 LH W/A	<b>725 &amp; 825 MODELS ONLY</b>
6	6	37212	NUT HEX	LOCK 3/8 NC
11	10	37214	NUT HEX	LOCK 1/2 NC
12	4	33626	WASHER LOCK	1/2"
17	10	33010	WASHER FLAT 7/16"	<b>620 MODEL ONLY</b>
	14	33010	WASHER FLAT 7/16"	<b>725 &amp; 825 MODELS ONLY</b>
23	6	13311	BOLT HEX 5/8 X 2 NC GR 5	<b>620 MODEL ONLY</b>
	6	13313	BOLT HEX 5/8 X 2-1/2 NC GR 5	<b>725 &amp; 825 MODELS ONLY</b>
24	8	33016	WASHER FLAT	5/8"
25	6	33630	WASHER LOCK 5/8"	<b>620 MODEL ONLY</b>
	7	33630	WASHER LOCK 5/8"	<b>725 MODEL ONLY</b>
	8	33630	WASHER LOCK 5/8"	<b>825 MODEL ONLY</b>
26	6	36114	NUT HEX FULL 5/8 NC	<b>620 MODEL ONLY</b>
	7	36114	NUT HEX FULL 5/8 NC	<b>725 MODEL ONLY</b>
	8	36114	NUT HEX FULL 5/8 NC	<b>825 MODEL ONLY</b>
27	5	32467	BOLT FLG THRD RLNG	3/8 X 3/4 NC
28	2	33012	WASHER FLAT	1/2"
29	4	13209	BOLT HEX	1/2 X 1 1/2 NC GR 5
30	1	311400	MOUNT CHUTE ROTATE TRP W/A	
31	2	311446	BRACE TOP STRUT T24 PAINTED	<b>725 &amp; 825 MODELS ONLY</b>
32	2	300583	PIN LOWER CAT 1	
33	3	104432	PIN LYNCH 7/16	
34	1	310841	FRAME ARM REARPULL T20 RH W/A	<b>620 MODEL ONLY</b>
	1	311418	FRAME ARM REARPULL T24 RH W/A	<b>725 &amp; 825 MODELS ONLY</b>
35	1	104397	PIN 3-PT UPPER CAT #1	
36	8	13207	BOLT HEX	1/2 X 1 1/4 NC GR 5
37	2	13319	BOLT HEX	5/8 X 4 NC GR 5
38	1	311404	BRACKET CRANK HOLDER TRP PAINTED	(311403 UNPAINTED)
39	2	13210	BOLT HEX	1/2 X 1 3/4 NC GR 5
40	1	310864	CROSSMEMBER TRP20 W/A	<b>620 MODEL ONLY</b>
	1	311420	CROSSMEMBER TRP24 W/A	<b>725 &amp; 825 MODELS ONLY</b>
41	6	103116	BOLT HEX	3/8 X 1 NC GR 5
42	5	33220	WASHER FENDER 3/8 X 1-1/2	
43	1	310897	SHIELD RUBBER REARPULL	
44	1	311413	HAND CRANK ADJUSTABLE PAINTED	
45	1	311409	SHAFT HAND CRANK W/A	
46	1	104410	PIN CLIP #9 5/32 X 3-1/16	
47	1	310589	JACK STAND LEG W/A	
48	1	300581	PIN SNAPPER 5/16" X 3"	
49	2	25537	SET SCREW	3/8 X 3/8
50	1	310560	SPOOL CABLE	
51	1	310581	BRKT CABLE MOUNT PAINTED	
52	1	37210	NUT HEX	LOCK 1/4 NC
53	1	13007	BOLT HEX	1/4 X 1 1/4 NC GR 5
54	1	312428	CUTTING EDGE B 62 DB	<b>620 MODEL ONLY</b>
	1	318430	CUTTING EDGE B 74 DB	<b>725 MODEL ONLY</b>
	1	318474	CUTTING EDGE B 86 DB	<b>825 MODEL ONLY</b>
55	6	22664	BOLT PLOW 5/8 X 1-3/4 NC GR5	<b>620 MODEL ONLY</b>
	7	22664	BOLT PLOW 5/8 X 1-3/4 NC GR5	<b>725 MODEL ONLY</b>
	8	22664	BOLT PLOW 5/8 X 1-3/4 NC GR5	<b>825 MODEL ONLY</b>
56	4	36110	NUT HEX FULL	1/2 NC



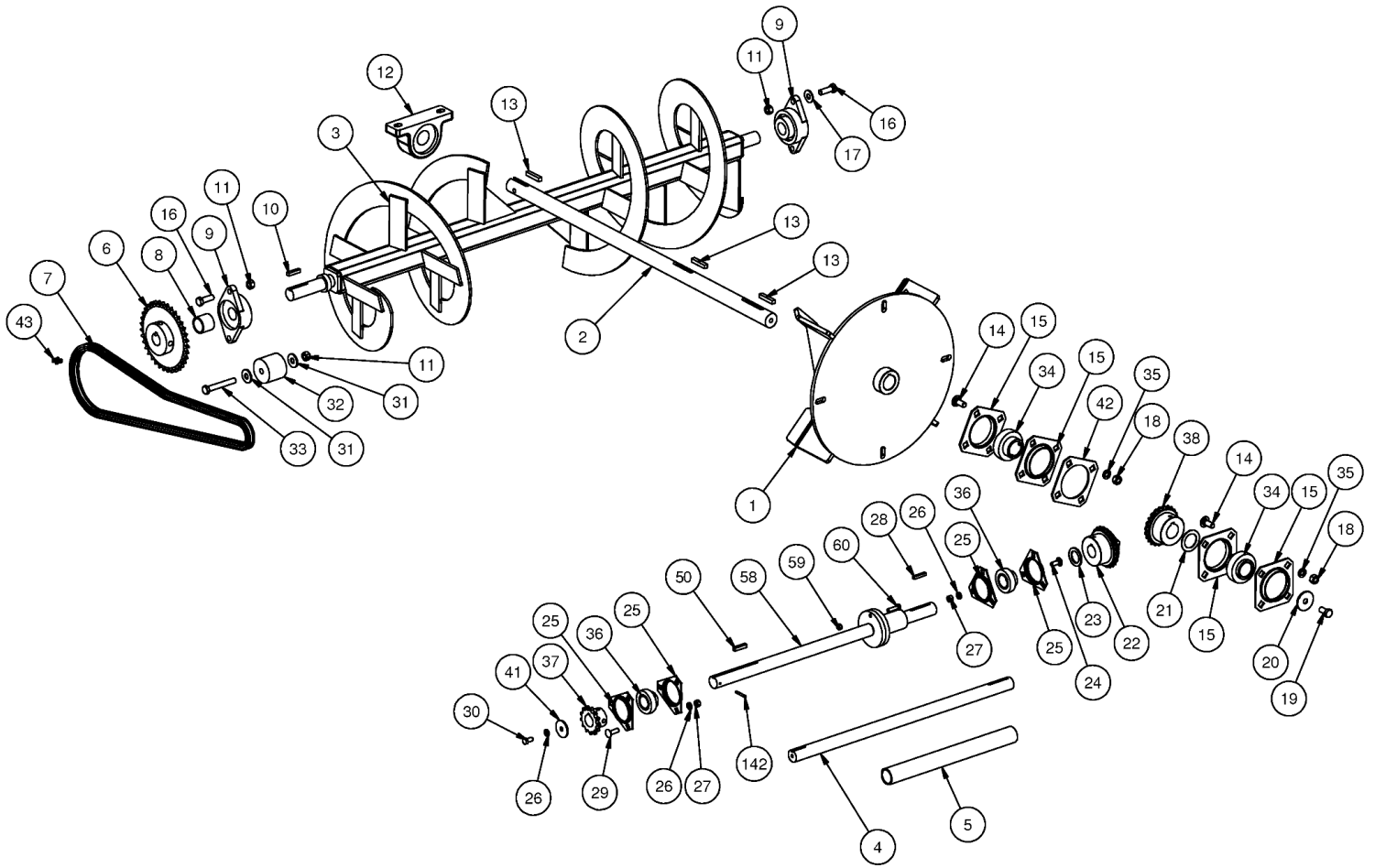
# PARTS INFORMATION



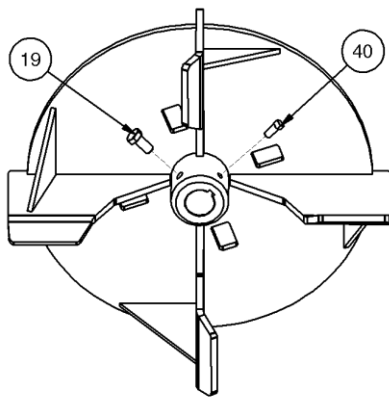
## 620 / 725 / 825 RP PARTS INFORMATION

ITEM	QTY	PART NO.	DESCRIPTION	STOCK NO.
1	1	310832	FAN 20D CCW W/A	620 MODEL ONLY
	1	310884	FAN 24D CCW W/A	725 & 825 MODELS ONLY
2	1	310837	SHAFT 1.5 X 40.50 FAN REARPULL	
3	1	315004	AUGER 16D X 60 T20 W/A	620 MODEL ONLY
	1	315005	AUGER 16D X 72 T24 W/A	725 MODEL ONLY
	1	315006	AUGER 16D X 84 T24 W/A	825 MODEL ONLY
4	1	310839	SHAFT 1.25 X 27.75 AUGER DRIVE 60	REPLACED BY 330633 OCT 2016
	1	310835	SHAFT 1.25 X 33.50 AUGER DRIVE 72	REPLACED BY 330634 OCT 2016
	1	310879	SHAFT 1.25 X 39.50 AUGER DRIVE 84	REPLACED BY 311769 OCT 2016
5	1	311432	SHIELD SHAFT 60 PVC X 21 PNT	REPLACED BY 330638 OCT 2016
	1	311434	SHIELD SHAFT 72 PVC X 27 PNT	REPLACED BY 330640 OCT 2016
	1	311436	SHIELD SHAFT 84 PVC X 33 PNT	REPLACED BY 330642 OCT 2016
6	1	201674	SPROCKET 50B35 X 1-1/4 B	
7	1	310898	CHAIN ROLLER NO 50 X 98P C/L	
8	1	310368	BUSHING BP40 1.25 X 1.343	
9	2	100832	BRG 1.25 2-B FLG	
10	1	300419	KEY SQ 5/16 X 1 1/4	
11	5	37214	NUT HEX	LOCK 1/2 NC
12	1	200322	BRG 1.5 PLW BLK	
13	3	201157	KEY SQ 3/8 X 2	
14	8	200066	BOLT CARRIAGE	1/2 X 1 1/4 NC GR 5
15	4	310893	FLANGETTE 4-B 80MM	
16	4	13209	BOLT HEX	1/2 X 1 1/2 NC GR 5
17	2	33010	WASHER FLAT	7/16"
18	8	36110	NUT HEX	FULL 1/2 NC
19	1	13205	BOLT HEX	1/2 X 1 NC GR 5
20	1	317287	WASHER FENDER 1/2" X 2" X 1/8"	
21	1	33475	WASHER MB 1-1/2 14GA NARROW	
22	1	310874	GEAR BEVEL 6DP 24T 1.25B	
23	1	33466	WASHER MB 1-1/4 10GA NARROW	
24	3	21817	BOLT CARRIAGE	3/8 X 1 NC GR5
25	4	203741	FLANGETTE 3-B	
26	7	103880	WASHER LOCK 3/8"	825RP ONLY
	6	103880	WASHER LOCK 3/8"	620RP & 725RP ONLY
27	6	36306	NUT HEX	FULL 3/8 NC GR 5
28	1	200054	KEY SQ 1/4 X 1-1/2	
29	3	21818	BOLT CARRIAGE	3/8 X 1 1/4 NC GR5
30	1	13103	BOLT HEX 3/8 X 3/4 NC GR 5	825RP ONLY
31	2	33012	WASHER FLAT	1/2"
32	1	310895	IDLER PLASTIC 2.5 OD X 2-3/16	
33	1	13217	BOLT HEX	1/2 X 3-1/2 NC GR 5
34	2	310894	BRG INSERT 1 1/2 (SS)	
35	8	33626	WASHER LOCK	1/2"
36	2	202159	BRG INSERT 1 1/4 SM (SS)	
37	1	103071	SPROCKET 50B13 X 1 1/4 B HT	
38	1	310875	BEVEL GEAR 6DP 24T 1.50 BORE	
40	1	26067	SCREW SET	3/8 X 3/4 SQ HD
41	1	202830	WASHER LARGE 3/8 x 1 3/4	825 RP ONLY
42	1	311448	SHIM BEARING T24 10GA-4B	T24 BLOWERS ONLY
43	1	201210	CHAIN OFFSET NO 50	725 & 825 MODELS ONLY
50	1	100810	KEY SQ 5/16 X 1 1/2	
58	1	330633	AUGER DS 620 1.25 X 28 W/A	REPLACED 310839 OCT 2016
	1	330634	AUGER DS 725 1.25 X 34 W/A	REPLACED 310835 OCT 2016
	1	311769	AUGER DS 825 1.25 X 39.5 RAW W/A	REPLACED 310879 OCT 2016
59	1	37211	NUT REV LOCK 5/16 NC GR 5	COMES WITH SHAFT
60	1	201384	BOLT HEX 5/16 X 1-1/4 NC GR 2	COMES WITH SHAFT
142	1	64137	PIN ROLL 3/16 X 1-1/2	FOR 620RP AND 725 RP ONLY

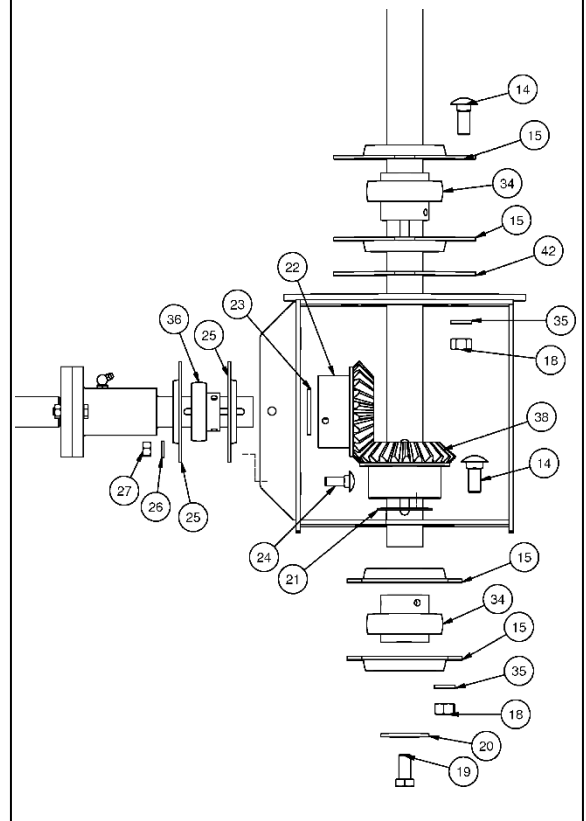
# 620 / 725 / 825 RP PARTS INFORMATION



**VIEWED FROM FRONT**

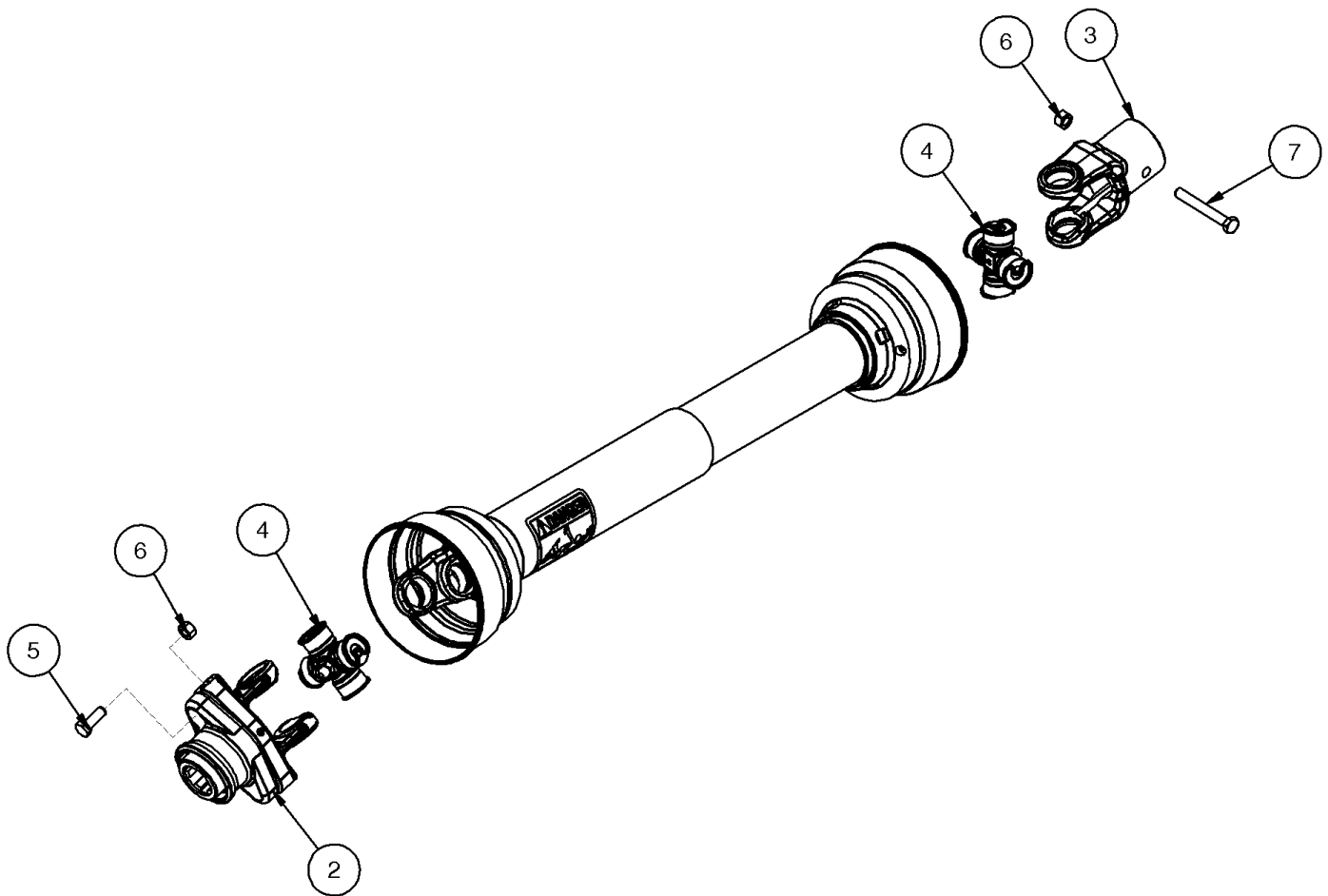


**VIEWED FROM TOP**



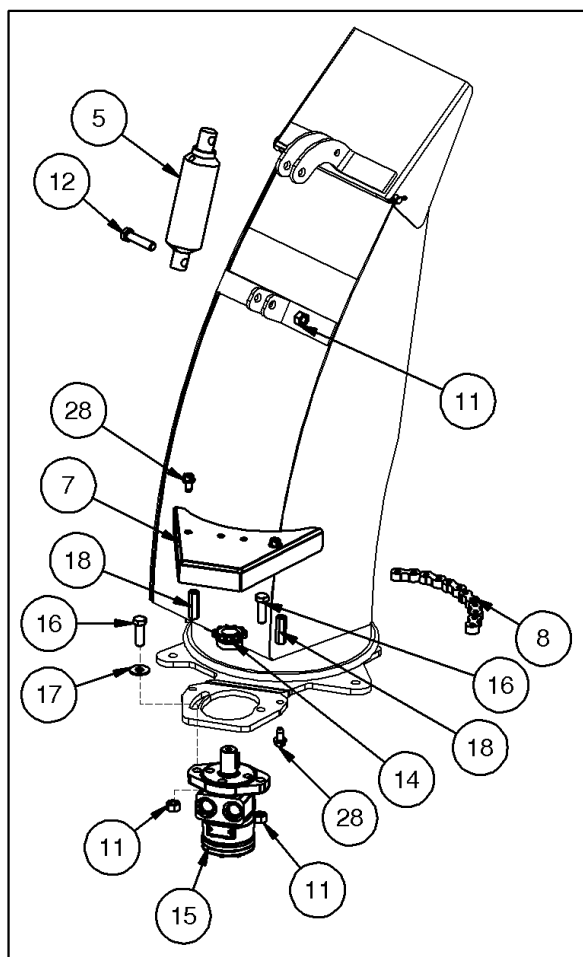
## PARTS INFORMATION

ITEM	QTY	PART NO.	DESCRIPTION	STOCK NO.
	1	311770	DRIVELN 35S 6T X 1.5 X 34.73	725 & 825 (REPLACES 320148)
	1	320148	DRIVELN 35S 6T X 1.5 X 37.73	725 & 825 (OBSOLETE)
	1	320149	DRIVELN 14S 6T X 1.5 X 27.79	620 MODEL ONLY
2	1	320241	YOKE ASSM BALL SHR 14S	620 MODEL ONLY
	1	320371	YOKE ASM BALL SHEAR 35S 1 3/8S	725 & 825 MODEL ONLY
3	1	320384	YOKE 14S 1 1/2 RD - SS & HOLE	620 MODEL ONLY
	1	320377	YOKE 35S 1 1/2 RD - SS & HOLE	725 & 825 MODEL ONLY
4	2	320243	REPAIR KIT U-JOINT 14S	620 MODEL ONLY
	2	320385	REPAIR KIT U-JOINT 35S	725 & 825 MODEL ONLY
5	1	201600	BOLT HEX	3/8 X 1 NC GR 2
6	2	37212	NUT REV LOCK	3/8 NC
7	1	13114	BOLT HEX	3/8 X 2 3/4 NC GR 5



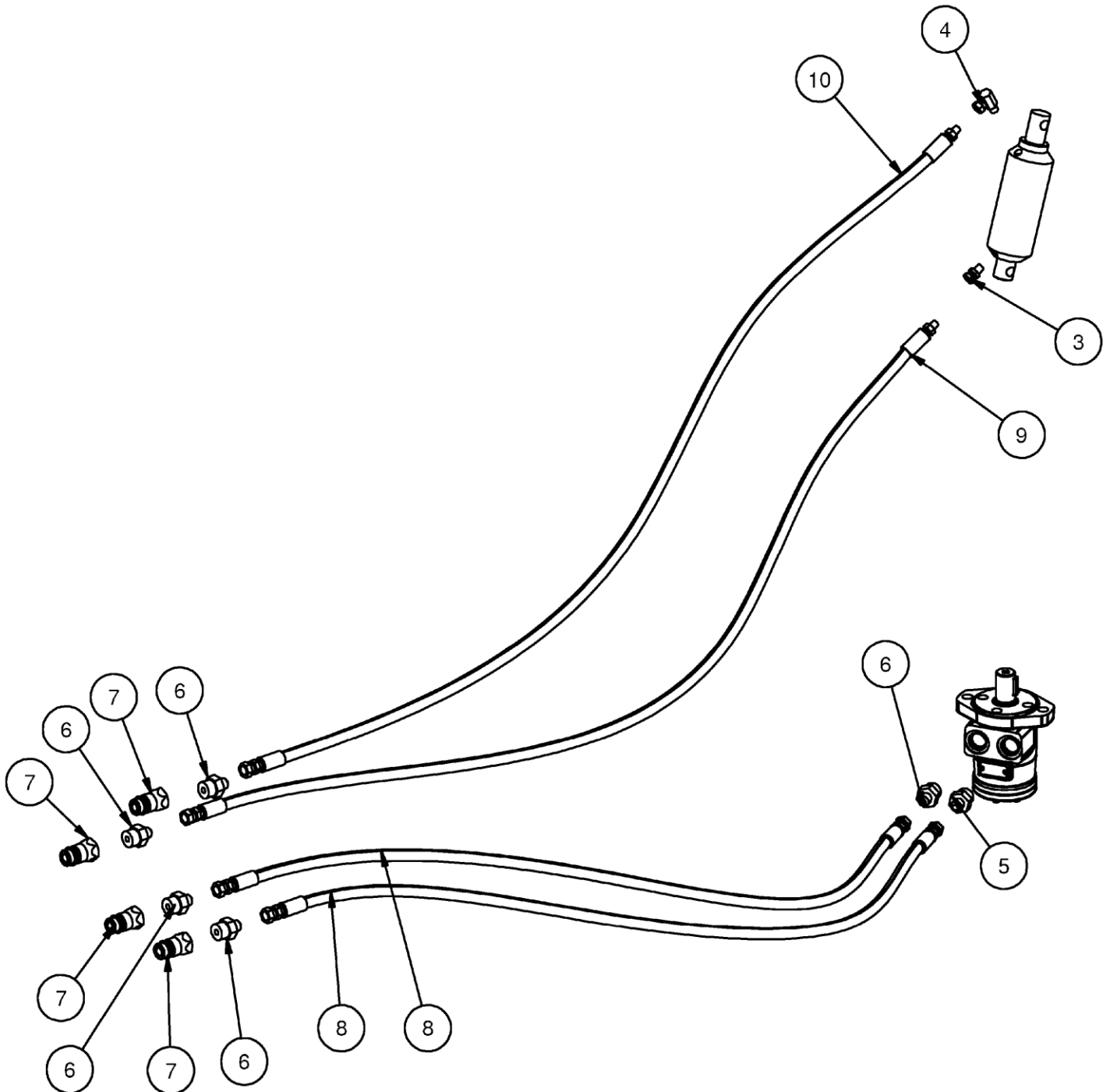
## PARTS INFORMATION

ITEM	QTY	PART NO.	DESCRIPTION	STOCK NO.
5	1	103273	CYLINDER 4" STROKE	HYD DEFLECTOR. PKG
7	1	315049	SHIELD CHAIN ROTATE PNT	HYD CHUTE ROT. PKG
8	1	315089	CHAIN ROLLER 40 X 80P 2/CL	HYD CHUTE ROT. PKG
11	1	37214	NUT HEX LOCK 1/2 NC	HYD DEFLECTOR. PKG
	2	37214	NUT HEX LOCK 1/2 NC	HYD CHUTE ROT. PKG
12	1	13212	BOLT HEX 1/2 X 2 1/4 NC GR 5	HYD DEFLECTOR PKG
14	1	100539	SPROCKET 40B12 X 1 B	HYD CHUTE ROT. PKG
15	1	103329	MOTOR HYD 2.8 CID	HYD CHUTE ROT. PKG
16	2	13209	BOLT HEX 1/2 X 1 1/2 NC GR 5	HYD CHUTE ROT. PKG
	1	33010	WASHER FLAT 7/16	HYD CHUTE ROT. PKG
18	2	37820	COUPLING NUT 3/8 X 1-3/4 ZINC	HYD CHUTE ROT. PKG
28	4	19929	BOLT 3/8 X 3/4 NC FLG	HYD CHUTE ROT. PKG
60	1	300709	KIT PARTS HYD CHUTE ROT. ONLY	FOR CUSTOMERS WITH MANUAL



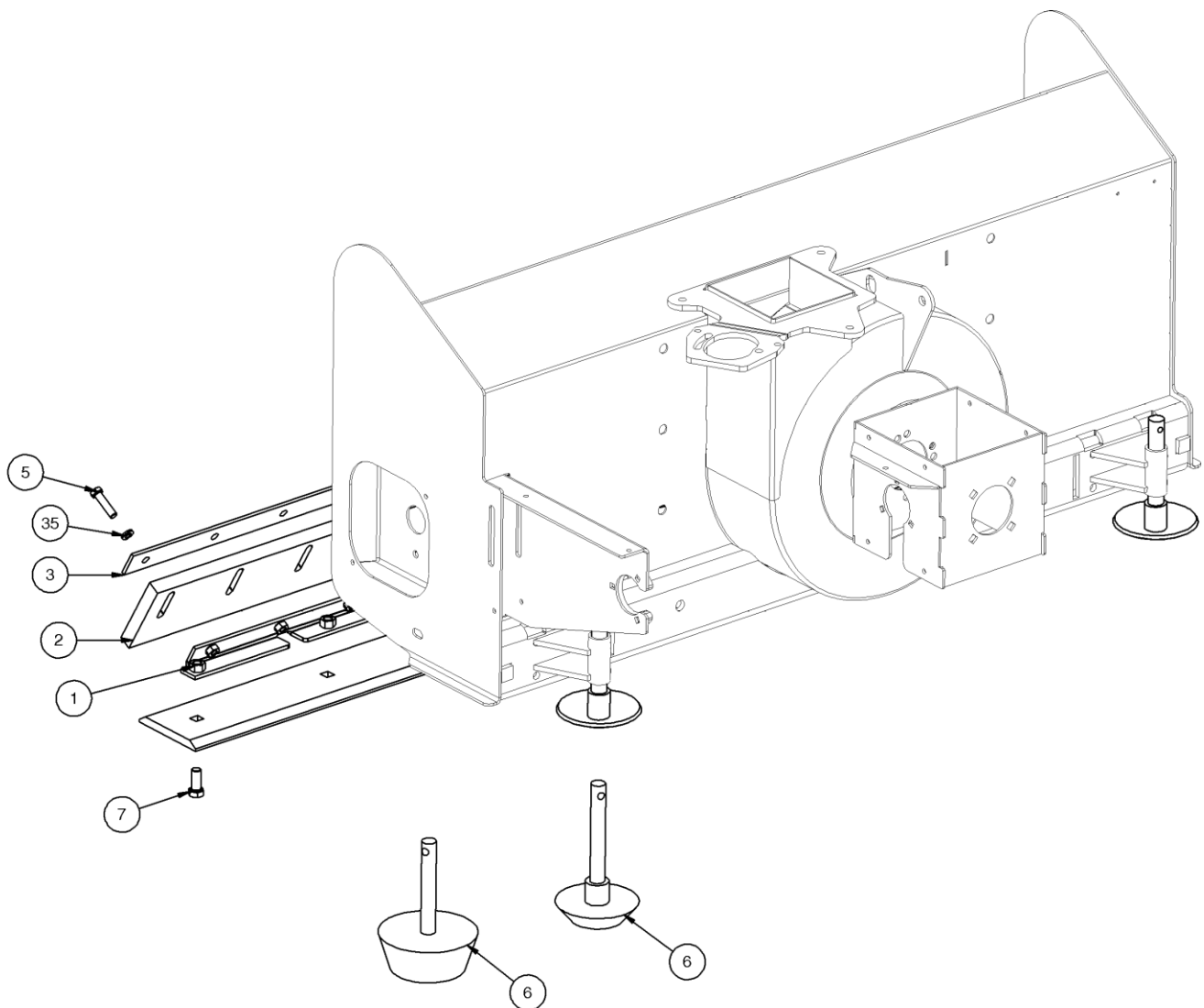
## PARTS INFORMATION

ITEM	QTY	PART NO.	DESCRIPTION	STOCK NO.
3	1	103318	ADPT STR 2MP-2FPX	OPT HYD DEFLECTOR PKG
4	1	320064	ADPT REST ELB 2MP-2FPX-90-1/16	OPT HYD DEFLECTOR PKG
5	1	320659	ADPT RESTRICTOR 10MB-6MJ-1/32	OPT HYD ROTATION PKG
6	3	201522	ADPT STR 10MB-6MJ	OPT HYD ROTATION PKG
		201522	ADPT STR 10MB-6MJ	OPT HYD DEFLECTOR PKG
7	2	200248	COUPLER HYD PPT 1/2-10OR M	OPT HYD ROTATION PKG
	2	200248	COUPLER HYD PPT 1/2-10OR M	OPT HYD DEFLECTOR PKG
8	2	310892	HOSE 1/4 X 90 6FJX-6FJX	OPT HYD ROTATION PKG
9	2	310891	HOSE 1/4 X 104 6FJX-2MP	OPT HYD DEFLECTOR PKG



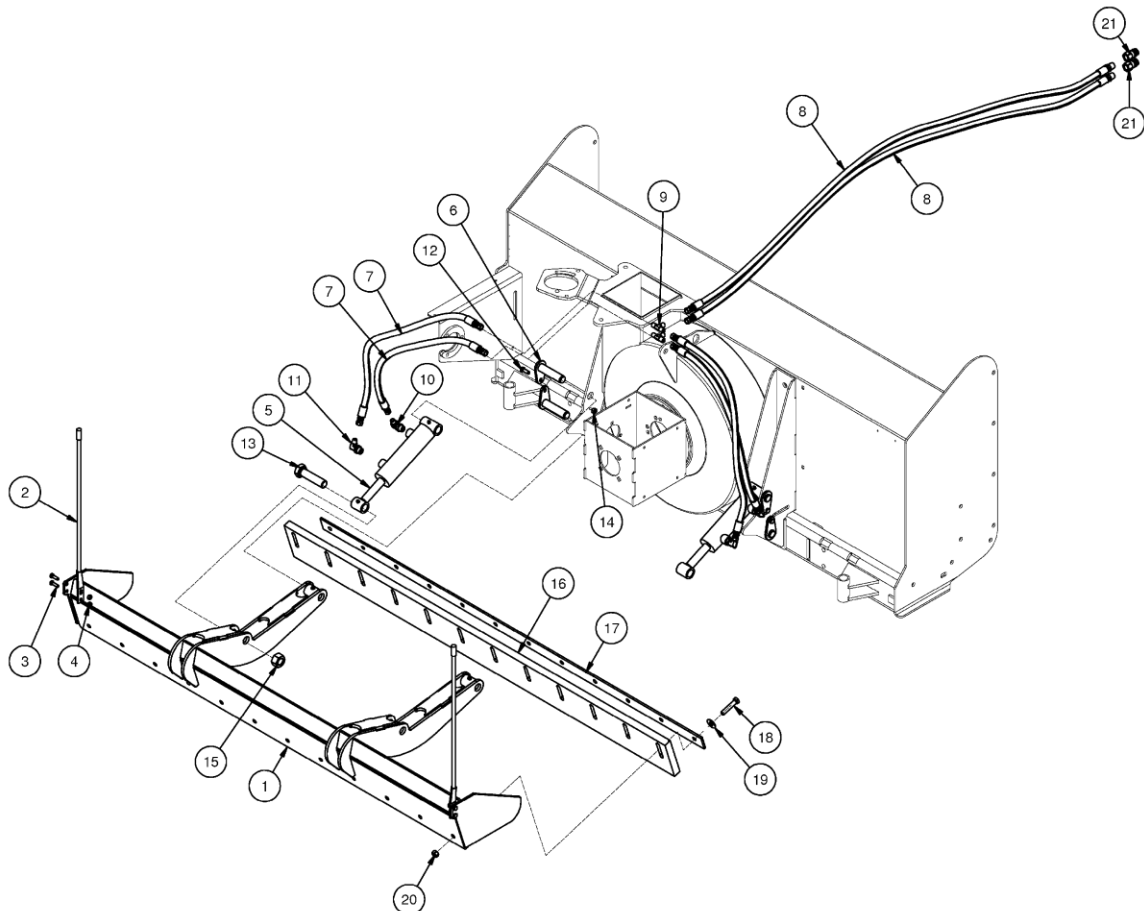
## PARTS INFORMATION

ITEM	QTY	PART NO.	DESCRIPTION	STOCK NO.
1	1	315875	BRACKET URETHANE 57 W/A	WITH OPT. URE/RUB PKG
	1	315876	BRACKET URETHANE 69 W/A	WITH OPT. URE/RUB PKG
	1	315878	BRACKET URETHANE 81 W/A	WITH OPT. URE/RUB PKG
2	1	315459	CUTTING EDGE URETHANE 57	OPTIONAL URETHANE PKG
	1	315460	CUTTING EDGE URETHANE 69	OPTIONAL URETHANE PKG
	1	315462	CUTTING EDGE URETHANE 81	OPTIONAL URETHANE PKG
2	1	300603	CUTTING EDGE RUBBER 57	OPTIONAL RUBBER PKG
	1	300604	CUTTING EDGE RUBBER 69	OPTIONAL RUBBER PKG
	1	300606	CUTTING EDGE RUBBER 81	OPTIONAL RUBBER PKG
3	1	315463	BACKING PLATE SB 57	WITH OPT. URE/RUB PKG
	1	315464	BACKING PLATE SB 69	WITH OPT. URE/RUB PKG
	1	315466	BACKING PLATE SB 81	WITH OPT. URE/RUB PKG
5	(6) 60" (7) 72" (8) 84"	13211	BOLT HEX - 1/2 X 2 NC GR 5	WITH OPT. URE/RUB PKG
6	2	315467	SKID SHOE URETHANE	OPTIONAL SKID SHOE PKG
	2	300086	SKID SHOE HEAVY-DUTY	OPTIONAL SKID SHOE PKG
7	(6) 60" (7) 72" (8) 84"	13309	BOLT HEX - 5/8 X 1 1/2 NC GR 5	WITH OPT. URE/RUB PKG
35	(6) 60" (7) 72" (8) 84"	33626	WASHER LOCK - 1/2	WITH OPT. URE/RUB PKG



## PARTS INFORMATION

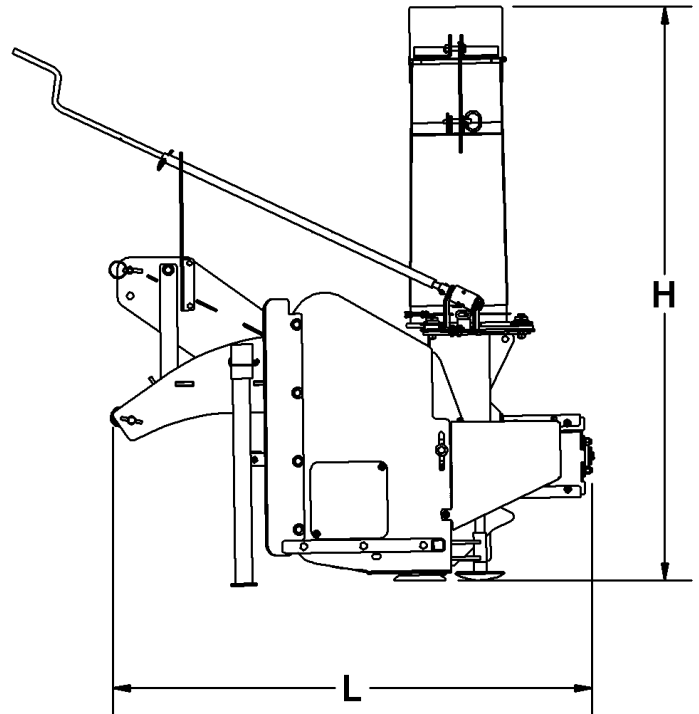
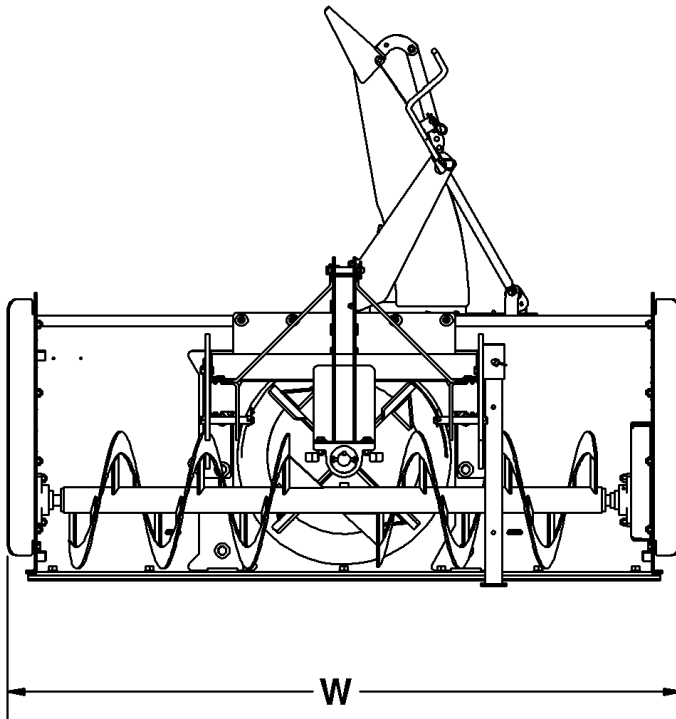
ITEM	QTY	PART NO.	DESCRIPTION	STOCK NO.
1	1	311703	FRAME REAR BLADE 72 W/A	
	1	311704	FRAME REAR BLADE 84 W/A	
2	1	100302	KIT MARKER ROD SNOWBLADE	INCLUDES HWD
3	4	13055	BOLT 5/16 X 1 NC GR 5	PARTS ONLY
4	4	37211	NUT REV LOCK 5/16 NC GR 5	PARTS ONLY
5	2	400074	CYLINDER 2 X 4 B-B	
6	4	400041	PIN 1 X 4 W/A	
7	4	311760	HOSE 3/8 X 30 6FJX-6FJX	CYLINDER
8	2	311759	HOSE 3/8 X 84 10MB-6FJX	LEAD
9	2	203088	ADPT TEE 6MJ-6MJ-6MJ	
10	2	313267	ADPT RESTRICTOR 8MB-6MJ-90-.1	
11	2	320089	ADPT ELB 8MB-6MJ-90	
12	4	13105	BOLT HEX	3/8 X 1 NC GR 5
13	2	13469	BOLT HEX	1 X 4 NC GR 5
14	4	37212	NUT REV LOCK	3/8 NC
15	2	37219	NUT REV LOCK	1 NC
16	1	315460	CUTTING EDGE URE 69 SB	OPT URETHANE PKG 72
	1	315462	CUTTING EDGE URE 81 SB	OPT URETHANE PKG 84
	1	300604	CUTTING EDGE RUBBER 69 SB	OPT RUBBER PKG 72
	1	300606	CUTTING EDGE RUBBER 81 SB	OPT RUBBER PKG 84
17	1	315464	BACKING PLATE SB 69	OPT URE/RUB PKG 72
	1	315466	BACKING PLATE SB 81	OPT URE/RUB PKG 84
18	12	13213	BOLT 1/2 X 2-1/2 NC GR 5	OPT URE/RUB PKG 72
	14	13213	BOLT 1/2 X 2-1/2 NC GR 5	OPT URE/RUB PKG 84
19	12	33012	WASHER FLAT USS 1/2	OPT URE/RUB PKG 72
	14	33012	WASHER FLAT USS 1/2	OPT URE/RUB PKG 84
20	12	37214	NUT REV LOCK 1/2 NC GR 5	OPT URE/RUB PKG 72
	14	37214	NUT REV LOCK 1/2 NC GR 5	OPT URE/RUB PKG 84
21	2	200248	COUPLER HYD PPT 1/2-10OR M	





## GENERAL SPECIFICATIONS

Model	620RP	725RP	825RP
Overall Width	62"	78"	90"
Overall Height	63"	67"	67"
Overall Length	48"	56"	56"
Stage	2	2	2
Cutting Width	60"	78"	90"
Cutting Height	27"	29"	32"
Fan Diameter	20" 4-blade	24" 4-blade	24" 4-blade
Auger Diameter	16" open flyting	16" open flyting	16" open flyting
PTO Input Speed	540 RPM	540 RPM	540 RPM
Chute Rotation	Manual 210°	Manual 210°	Hydraulic 270°
Driveline	14 series	35 series	35 series
Cutting Edge	Bolt-on 5/8" x 6"	Bolt-on 5/8" x 6"	Bolt-on 5/8" x 6"
Casting Distance	Up to 30'	Up to 40'	Up to 40'
HP Range	20-35	30-55	40-75
Hitch Requirement	Cat. I	Cat. I	Cat. I
Operating Weight	870 lbs.	1,110 lbs.	1,185 lbs.



All dimensions are in INCHES.

# BOLT TORQUE INFORMATION

## Torque-Tension Relationships for SAE J429 Grade Bolts

Nominal Thread Size	SAE J429 Grade 2			SAE J429 Grade 5			SAE J429 Grade 8		
	Clamp Load (lbs)	Tightening Torque		Clamp Load (lbs)	Tightening Torque		Clamp Load (lbs)	Tightening Torque	
		K = .15	K = .20		K = .15	K = .20		K = .15	K = .20
Unified Coarse Thread Series									
1/4-20	1,300	49 in-lbs	65 in-lbs	2,000	75 in-lbs	100 in-lbs	2,850	107 in-lbs	143 in-lbs
5/16-18	2,150	101	134	3,350	157	210	4700	220	305
3/8-16	3,200	15 ft-lbs	20 ft-lbs	4,950	23 ft-lbs	31 ft-lbs	6,950	32.5 ft-lbs	44 ft-lbs
7/16-14	4,400	24	30	6,800	37	50	9,600	53	70
1/2-13	5,850	36.5	49	9,050	57	75	12,800	80	107
9/16-12	7,500	53	70	11,600	82	109	16,400	115	154
5/8-11	9,300	73	97	14,500	113	151	20,300	159	211
3/4-10	13,800	129	173	21,300	200	266	30,100	282	376
7/8-9	11,425	125	166	29,435	321	430	41,550	454	606
1-8	15,000	187.5	250	38,600	482.5	640	54,540	680	900
Unified Fine Thread Series									
1/4-28	1,500	55 in-lbs	75 in-lbs	2,300	85 in-lbs	115 in-lbs	3,250	120 in-lbs	163 in-lbs
5/16-24	2,400	112	150	3,700	173	230	5,200	245	325
3/8-24	3,600	17 ft-lbs	22.5 ft-lbs	5,600	26 ft-lbs	35 ft-lbs	7,900	37 ft-lbs	50 ft-lbs
7/16-20	4,900	27	36	7,550	42	55	10,700	59	78
1/2-20	6,600	41	55	10,200	64	85	14,400	90	120
9/16-18	8,400	59	79	13,000	92	122	18,300	129	172
5/8-18	10,600	83	110	16,300	128	170	23,000	180	240
3/4-16	15,400	144	193	23,800	223	298	33,600	315	420
7/8-14	12,610	138	184	32,480	355	473	45,855	500	668
1-12	16,410	205	273	42,270	528	704	59,670	745	995

Clamp load estimated as 75% of proof load for specified bolts.

Torque values for 1/4 and 5/16 inch series are in inch-pounds. All other torque values are in foot-pounds.

Torque values calculated from formula  $T = KDF$

where:  $K=0.15$  for "lubricated" conditions

$K=0.20$  for "dry" conditions



## **LIMITED WARRANTY**

Erskine Attachments LLC warrants each new machine manufactured by us to be free from defects in material and workmanship for a period of twenty-four (24) months from date of delivery to the original purchaser.

Our obligation under this warranty is to replace free of charge, at our factory or authorized dealership, any part proven defective within the stated warranty time limit.

All parts must be returned freight prepaid and adequately packaged to prevent damage in transit.

This warranty does not cover:

1. New products which have been operated in excess of rated capacities or negligence
2. Misuse, abuse, accidents or damage due to improperly routed hoses
3. Machines which have been altered, modified or repaired in any manner not authorized by our company
4. Previously owned equipment
5. Any ground engaging tools in which natural wear is involved, i.e. tooth tips, cutting teeth, etc
6. Normal maintenance
7. Fork tines
8. Hydraulic motors that have been disassembled in any manor

In no event will the Sales Representative, Dealership, Erskine Attachments LLC, or any other company affiliated with it or them be liable for incidental or consequential damages or injuries, including but not limited to the loss of profit, rental or substitute equipment or other commercial loss. Purchaser's sole and exclusive remedy being as provided here in above.

Erskine Attachments LLC must receive immediate notification of defect and no allowance will be made for repairs without our consent or approval.

This warranty is in lieu of all other warranties, express or implied by law or otherwise, and there is no warranty of merchantability or fitness purpose.

No agent, employee, or representative of Erskine Attachments LLC has any authority to bind Erskine Attachments LLC to any warranty except as specifically set forth herein. Any of these limitations excluded by local law shall be deemed deleted from this warranty; all other terms apply.

This warranty may not be enlarged or modified in any manner except in writing signed by an executive officer of Erskine Attachments LLC to improve its products whenever it is possible and practical to do so. Erskine Attachments LLC reserves the right to make changes and or add improvements at any time without incurring any obligation to make such changes or add such improvements to products previously sold.

Erskine Attachments LLC  
P.O. Box 1083 Alexandria, MN 56308  
Phone (218) 435-4045 Fax (218) 435-5293



**P/N 300620**  
Erskine Attachments LLC

**Date Printed: 8/26/2020**

Printed in U.S.A.