



Utility HD Brush Mower V2

For

Skid Steer Loaders

Operator's Manual
Maintenance
Parts Information



Read this Manual Before Use

SAFETY	3-4
SERIAL NUMBER/DECAL LOCATION	5-6
MOUNTING INSTRUCTIONS	7-8
OPERATING INSTRUCTIONS	9-10
ROUTINE MAINTENANCE	11-14
PARTS INFORMATION	15-17
GENERAL SPECIFICATIONS	18
WARRANTY	19

REFERENCE INFORMATION

Write the serial number for your attachment in the spaces below. Always refer to this serial number when calling for service or parts.

Serial Number.....

YOUR ATTACHMENTS DEALER

ADDRESS:

PHONE:

CONTACT:

NOTE: *Erskine Attachments LLC reserves the right to make improvements in design or changes in specifications at any time without notice and without incurring any obligations to install them on units previously sold.*

SAFETY

DO NOT use or perform maintenance on this machine until this manual has been read and understood. In addition, read the Operation and Maintenance Manual(s) pertaining to the attachment and the attachment carrier (“Loader”).

The user is responsible for inspecting the machine daily, and for having parts repaired or replaced when continued use of the machine would cause damage, excessive wear to other parts or make the machine unsafe for continued operation.

If an operating procedure, tool device, maintenance or work method not specifically recommended is used; you must satisfy yourself that it is safe for you and others. You must also ensure that the attachment will not be damaged or made unsafe by the procedures you choose.

Erskine Attachments LLC cannot anticipate every possible circumstance that might involve potential hazard. The safety messages found in this manual and on the machine are therefore not all inclusive

The signal words **CAUTION**, **WARNING**, or **DANGER** are used to indicate hazards.

⚠ CAUTION Indicates a potentially hazardous situation which, if not avoided, may result in minor or moderate injury.

⚠ WARNING Indicates a potentially hazardous situation which, if not avoided, could result in death or serious injury.

⚠ DANGER Indicates a potentially hazardous situation which, if not avoided, will result in death or serious injury.

The word **IMPORTANT** is used in the text when immediate damage will occur due to improper technique or operation.

The word **NOTE** is used to convey information that is out of context with the manual text; special information such as specifications, techniques, reference information, and other information of a supplementary nature.

Improper operation can cause serious injury or death.

Pre-operation

- This attachment is designed for mowing grass, brush, and small trees only. **NEVER** use this attachment for any other purpose.
- Read the operator's manual for the "Skid Steer Loader." **NEVER** allow untrained people to operate.
- Operating instructions must be given to everyone before operating this attachment and at least once a year thereafter in accordance with OSHA regulations.
- **NEVER** exceed the maximum recommended input power or speed specifications for the attachment. Over-powering or over-speeding the attachment may cause personal injury and/or machine damage.
- Keep all shields, guards, and covers in place.
- Do not modify equipment or add attachments that are not approved by Erskine Attachments LLC.
- Use adequate safety warning lights and devices as required by local regulations. Obey all local laws and regulations regarding machine operation on public property.

Operation

- To protect the operator from debris and cab intrusion, loader must have polycarbonate or similar strength door and door must be closed in order to operate the attachment.
- Hydraulic connections may be hot after use. Use gloves if connecting or disconnecting after use.
- Check and be sure all operating controls are in neutral before starting the engine.
- Keep people away from loader, attachment and discharge when in use. This attachment sends objects flying and has rotating parts. **NEVER** direct discharge toward people – rocks and debris can be thrown hundreds of feet.

Operation (continued)

- **NEVER** operate near embankments or terrain that is so steep that rollover could occur.
- Always stay in the operator position when using the attachment.
- Before leaving the operators position, disengage hydraulic drive, lower the attachment to rest flat on the ground, stop engine, set park brake, and wait for all motion to stop.
- **NEVER** place hands in the discharge area or clear debris while engine is running.

Avoid High Pressure Fluids Hazard



- Escaping fluid under pressure can penetrate the skin causing serious injury.
- Avoid the hazard by relieving the pressure before disconnecting hydraulic lines.
- Use a piece of paper or cardboard, NOT BODY PARTS, to check for suspected leaks. Wear protective gloves and safety glasses or goggles when servicing or performing maintenance on hydraulic systems.
- If an accident occurs, see a doctor immediately. Any fluid injected into the skin must be surgically removed within a few hours or gangrene may result.

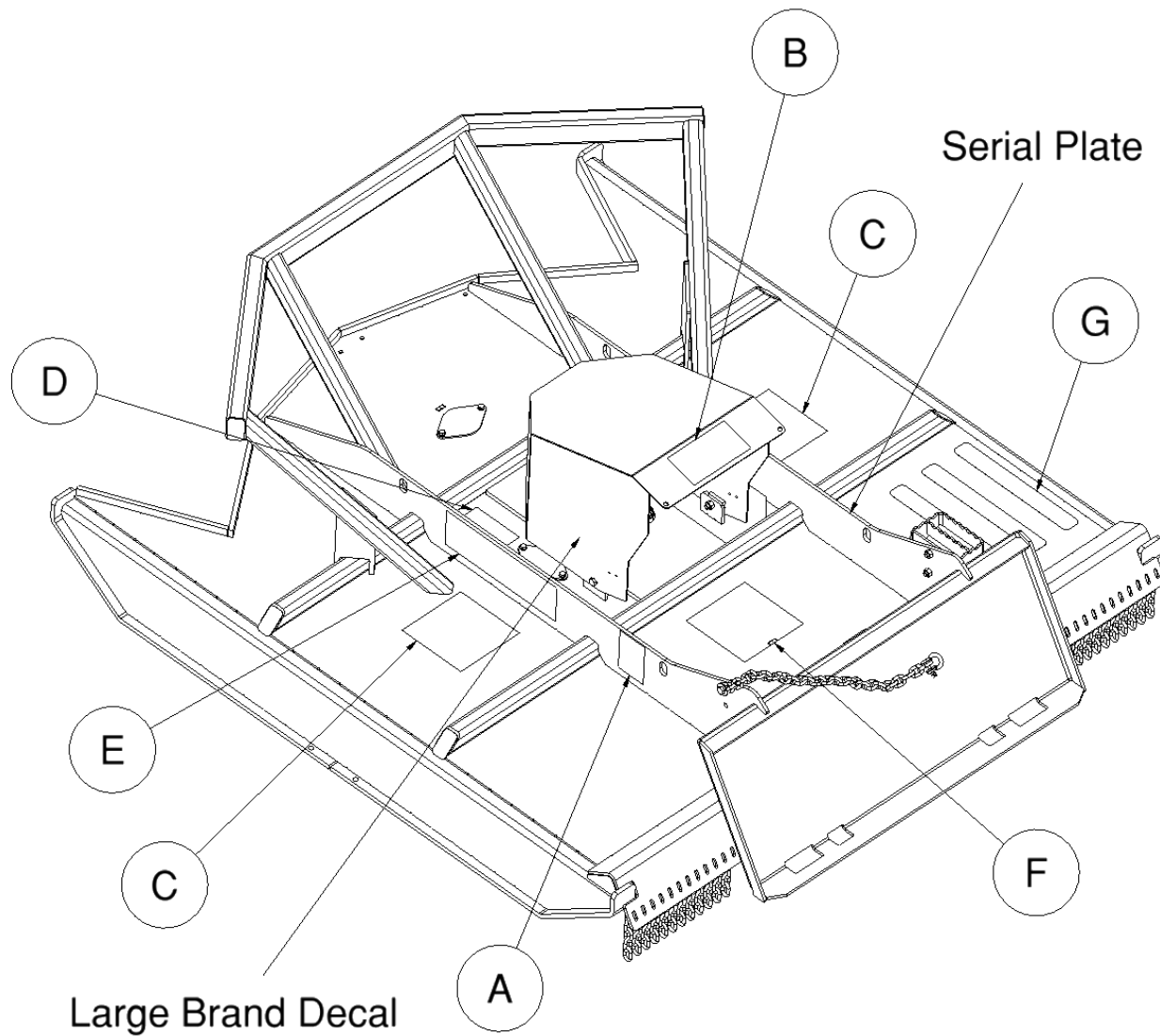
Maintenance

- **NEVER** make adjustments, lubricate, clean, or perform any service on the machine while it is in operation.
- Make sure the attachment is serviced on a daily basis. Improper maintenance can cause serious injury or death in addition to damage to the attachment and/or your equipment.

SERIAL NUMBER AND SAFETY DECAL LOCATIONS

Serial Number Location:

It is important to refer to the serial number of your attachment when making repairs or ordering parts. Early or later models (identification made by serial number) may use different parts, or it may be necessary to use different procedures in doing a specific operation. Serial number plate is located on the right side of deck.



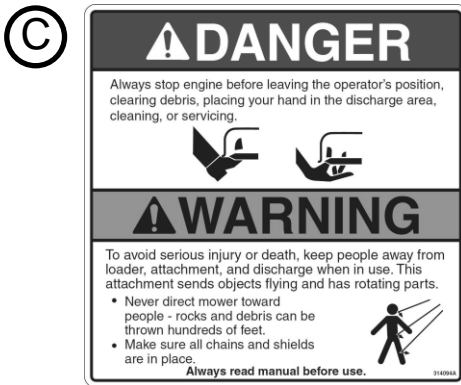
SERIAL NUMBER AND SAFETY DECAL LOCATIONS



Part Number: 200001

Location: Left side of motor cover

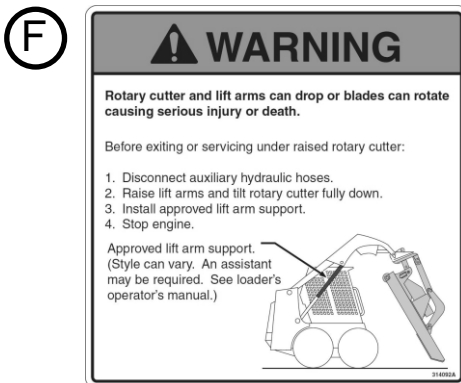
Quantity: 1



Part number: 314094

Location: Left and right top of deck

Quantity: 2



Part Number: 314092

Location: Top of motor cover

Quantity: 1

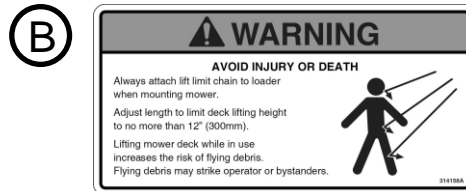


(Anti-skid tape 2 x 16)

Part number: 202153

Location: Right top of deck

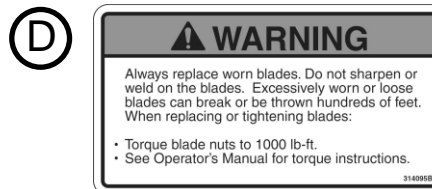
Quantity: 3



Part Number: 314158

Location: Right side of motor cover

Quantity: 1



Part Number: 314095

Location: Next to blade bolt access cover

Quantity: 1



Part Number: 400493

Location: Both sides of mower on deck ribs

Quantity: 2

Large Brand Decal

Location: Sides of motor cover

Quantity: 2

Safety Decals Locations:

The locations of the safety decals are shown. If these decals are missing, damaged, or painted over they must be replaced. Call Erskine Attachments LLC (218-435-4045) for replacement decals.

MOUNTING INSTRUCTIONS

After the initial set-up assembly is complete, use the following procedure to mount the attachment to the loader for user operation.



1. Use the step, treads, and grab handles to get on and off the loader and attachment.
2. Sitting in the operator's seat, lower seat bar and fasten the seat belt.
3. Drive the loader to the rear of the attachment. Put the loader quick attach coupler into the attachment mounting bracket.
4. Tilt the loader coupler backward a small amount until it is fully engaged in the attachment mounting bracket.
5. Stop the engine and engage the park brake.



6. Secure the coupler locking mechanism that attaches the attachment to the loader.

⚠ WARNING Coupler wedges or pins must extend through the holes in the attachment mounting plate. Levers must be fully down and locked. Failure to secure wedges or pins can allow attachment to come off and cause injury or death.

7. Route the lift limit chain over the boom cross-member and down through a hole in the front frame. Then latch the end of the chain back to itself allowing for some slack. Make sure the chain will not contact the rotating blades when mowing in reverse.



⚠ WARNING Lift limit chain must be installed to limit the total lift height of the attachment to less than 12 inches (300 mm). Failure to install the lift limit chain can increase the risk of dangerous flying debris being thrown at the cab causing serious injury or death.

MOUNTING INSTRUCTIONS

8. Connect the hydraulic quick couplers from the attachment to the loader.

Be sure to thread the hoses through the hose holder on the loader arm, if so equipped. If no hose holders are installed, contact the dealer that services your loader for assistance. Bungee straps can be used as an alternate method of securing the hoses.

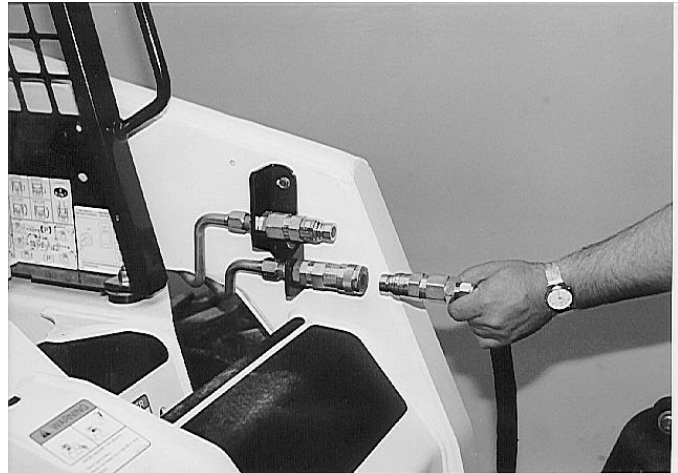
IMPORTANT: Make sure the quick couplers are fully engaged. If the quick couplers do not fully engage, check to see that the couplers are the same size and brand. Do not force the quick couplers together.

IMPORTANT: Wipe the ends of the hydraulic quick couplers (both lead and loader) with a rag to remove any possible contamination. Contamination can cause hydraulic components to fail and is not covered under warranty.

NOTE: Attachment is shipped with 12FJX (1-1/16" Female JIC Swivel) fittings on the ends of the lead hoses.

9. Make sure the hoses are properly routed to fit your specific loader. If the hoses are not routed correctly, hoses may get pinched or rub on tires. Be sure to check the hose routing through the full range of intended motion of the attachment before operating it.

More than one routing may be acceptable depending on the loader. Pick the routing that best suits your loader.



IMPORTANT: Proper hose routing is the responsibility of the owner and/or operator. Pinched or stretched hoses are not covered under warranty.

IMPORTANT: Make sure the pressurized hose is routed to the "P" port of the motor valve block. If it isn't, the mower will not operate (see page 10). See loader's operator's manual for details on identifying the pressurized hydraulic coupler.

NOTE: If you are operating the loader controls correctly and the mower still does not work, try switching the hydraulic couplers around on the mower lead hoses. This will effectively reverse the flow to the motor.

Mounting is now complete and you are ready to use the attachment. Use reverse order of above instructions to dismount the attachment from the loader.

OPERATING INSTRUCTIONS

⚠ WARNING Never operate without lift limit chain installed. Never modify the lift limit chain. To reduce the risk of injury or death check that it is operating properly when you first use a machine, after service, or anytime someone may have disconnected the lift limit chain.

The type of brush being cut and the ground conditions will determine the best ground speed and cutting procedure. The brush mower is designed to cut short or tall grass and brush.

IMPORTANT: Before operating the attachment, perform the service schedule for routine maintenance.

1. Inspect the cutting area for obstructions such as stumps, wire, rocks, electrical lines, debris, drop offs, holes, etc. Remove obstructions from the cutting area that might be picked up and thrown.
2. With the operator in the seat of the loader, the seat belt fastened and the seat bar lowered (if so equipped), start the engine.

⚠ WARNING To improve stability, always carry the attachment low to the ground while driving.

3. Activate the auxiliary hydraulic system to start the blade rotation. Make sure auxiliary hydraulic circuit is operating in the correct direction.

IMPORTANT: Engine must be at idle speed when engaging auxiliary hydraulic system.

IMPORTANT: This mower is designed to operate at flow rates from 18 to 30 GPM. Operating at higher flow rates than specified can cause serious damage to the mower and will void the warranty.



IMPORTANT: Do not operate the brush mower if excessive vibration is present. Serious damage can occur. Check blades and blade carrier.

4. With the loader boom lowered all the way and the auxiliary hydraulics engaged, slowly rotate the loader coupler forward until the skid plates are parallel to the ground.

NOTE: It may be helpful in certain instances to keep the front of the mower raised slightly.

5. If desired, the loader lift arms can be put in the float position. (See loader's operator's manual.)
6. Drive the loader forward into the work area.

NOTE: Raising the front of the brush mower a few inches may help while driving forward into thick brush and when turning.

OPERATING INSTRUCTIONS

Brake Circuit

The mower is equipped with a shutdown braking circuit that stops the blade rotation in an abbreviated amount of time. This is controlled with the pressure relief valve in the valve block.

To run the mower in continuous flow mode, the correct lead hose will need to be pressurized so that the check valve does not open. If the mower does not operate correctly with the oil flow engaged, try reversing the flow. If this works, either adjust the controls to allow for reverse flow (feature available on some skid steer models) or swap the couplers on the lead hoses of the mower.

⚠ WARNING Do not operate the brush mower with the brake circuit disabled or if malfunctioning. Never exit the loader when the blade is still moving. If you think your brake circuit is not functioning correctly have it serviced.

IMPORTANT: Do not adjust the pressure relief valve under any circumstances. This could cause an unsafe braking condition and will void all warranties.

IMPORTANT: Make sure the pressurized hose is routed to the “A” port of the motor valve block. If it isn’t, the mower will not operate.

See loader’s operator’s manual for details on identifying the pressurized hydraulic coupler.

NOTE: If you are operating the loader controls correctly and the mower still does not work, try switching the hydraulic couplers around on the mower lead hoses. This will effectively reverse the flow to the motor.

ROUTINE MAINTENANCE

⚠ WARNING Lower the attachment to rest flat on the ground, shut down the engine, relieve the hydraulic pressure to the attachment, wait for all motion to stop, and set park brake before leaving the operator's seat to perform service of any kind.

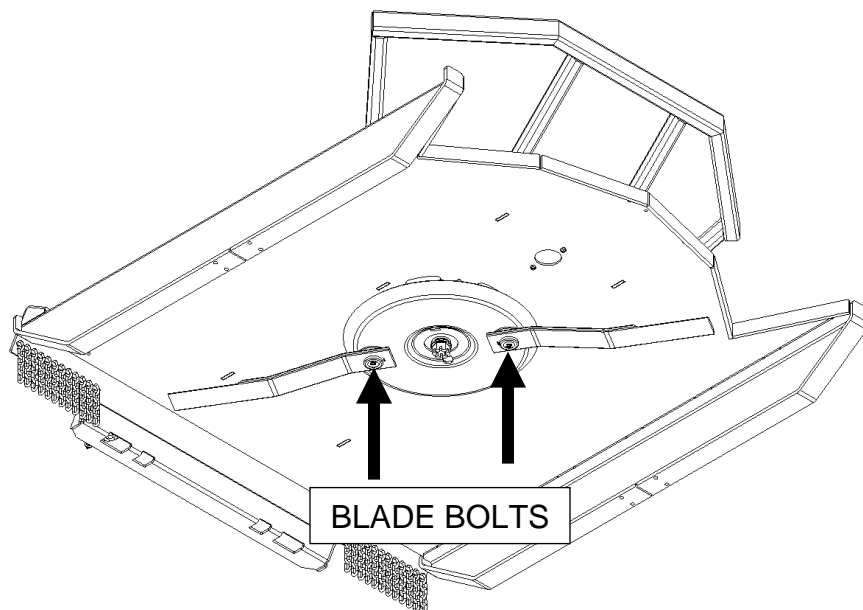
It is the operator's responsibility to make daily inspections of the attachment and loader for damage, loose bolts, fluid leaks, or anything else that could cause a potential service or safety problem. Preventive maintenance is the easiest and least expensive type of maintenance.

IMPORTANT: Bolts and set screws can loosen after initial usage. After first hour of operation check all bolts and set screws. This must also be done daily before operation. If nuts or bolts are missing or damaged, replace immediately.

DAILY INSPECTION

Check the following items every **4 hours** of operation:

1. Check lift chain and shackle for damage or defects.
2. Check blades for cracks or damage. Replace if necessary.
3. Check blade mounting hardware for proper torque of 1000ft. lbs. (1355Nm). Tap bolt head with hammer and retorque.
4. Check all hardware. Retighten if necessary.
5. Check chains, deck, and shields. Repair if damaged or replace if necessary.
6. Check for damaged or missing decals. Replace if missing.
7. Check for damaged or leaking hydraulic hoses or fittings. Replace if necessary.
8. Clean debris, leaves, grass, and flammable material from deck area and under covers.
9. Check lubrication level in bearing carrier. Use 75W-90 gear lube or equivalent for ambient temperatures of -5F to 60F. Use 85W-140 gear lube or equivalent for ambient temperatures of 40°F to 120°F. Capacity is 8oz. (.24L) approximately. Shaft must be vertical when checking.
10. Check that the anti-skid treads are in good condition.



ROUTINE MAINTENANCE

Blade Removal and Installation

NOTE: Refer to “Daily Inspection” on page 12 of this manual for daily maintenance check. Check that the blades can swing freely. Also check blades, mounting hardware, and stump jumper for wear, cracking, or breakage, which can cause excessive vibrations. Replace if damaged.

Only service the blades when attachment is attached to the loader.

⚠ WARNING To avoid injury or death, before exiting under or servicing under the attachment, be sure to disconnect the auxiliary hydraulic hoses. Raise the lift arms and tilt the attachment down fully. Install an approved lift arm support and stop the engine.

⚠ WARNING Bent, deformed, cracked, or damaged blades should be removed from the unit and discarded immediately. Never attempt to repair or reuse a damaged blade.

⚠ WARNING Always replace worn blades. Do not sharpen or weld on the blades. Excessively worn blades can break and be thrown hundreds of feet.

⚠ WARNING Wear safety glasses and gloves when removing and installing blades.

Removal:

1. Remove the two (2) bolts securing the Blade Nut Access Cover, and remove the cover.
2. Rotate the stump jumper [A] until the bolt [B] is accessible from the front of the mower, and use a hammer and punch to remove the roll pin.
3. Rotate the stump jumper [A] until the bolt [B] is aligned with the access hole.
4. Remove the slotted nut from the blade bolt.

NOTE: Blade bolt and blade may fall from the stump jumper when removing the blade nut. Always support the blade bolt and blade while removing the slotted nut.

Installation:

1. Always use a **new** slotted nut, bolt, and roll pin during assembly.

NOTE: The blade bolt fits only one way into the stump jumper. Install the washer between the blade and the stump jumper.

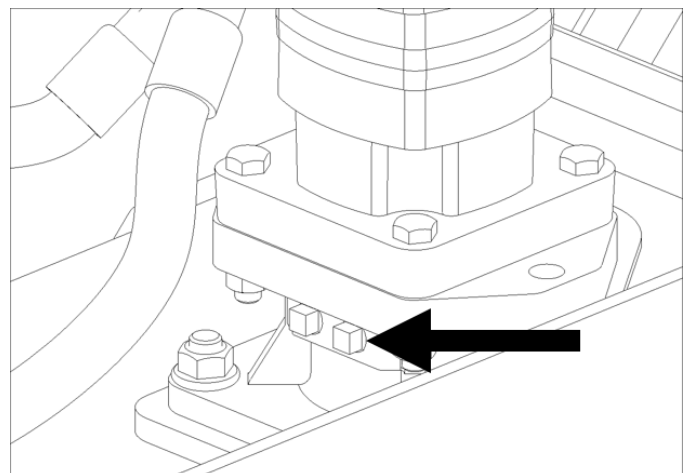
NOTE: To assist with slot alignment, mark the cross-hole position on the end of the bolt before installation.

2. Tighten the slotted nut to 1000 ft. lbs. (1355 Nm) torque. Continue to tighten the nut until the slots align with the bolt cross-hole.
3. Install the roll pin through the bolt and nut.
4. Repeat the procedure for the other blade.

Blade Carrier Removal

1. Support the mower so that it is in a safe and secure position. We recommend tipping the mower up on its nose with a hoist.
2. Secure the stump jumper with a chain hoist.
3. Remove the cotter pin and castle nut from the bearing carrier shaft.
4. Use a puller to free the stump jumper from the shaft, taking care not to let it fall.

IMPORTANT: When reinstalling the stump jumper, torque the hub nut to 600 ft-lbs.



ROUTINE MAINTENANCE

Bearing Carrier Fluid Check and Fill

1. Position the brush mower flat on the ground.
2. Remove the motor cover to gain access to the bearing carrier.
3. Remove one of the oil fill plugs. The oil must be level with the plug hole.
4. If the oil level is low, add EP80W-90 or EP85W-140 oil until it is level with the hole.

NOTE: Bearing carrier oil capacity is approximately 8 oz.

5. Reinstall the fill plug and motor cover.

IMPORTANT: Fluids such as engine oil, gear lube, and hydraulic fluid must be disposed of in an environmentally safe manner. Some regulations require that certain spills and leaks be cleaned in a specific manner. Check local, state, and federal regulations for the correct disposal procedure.

Cleaning the Brush Mower

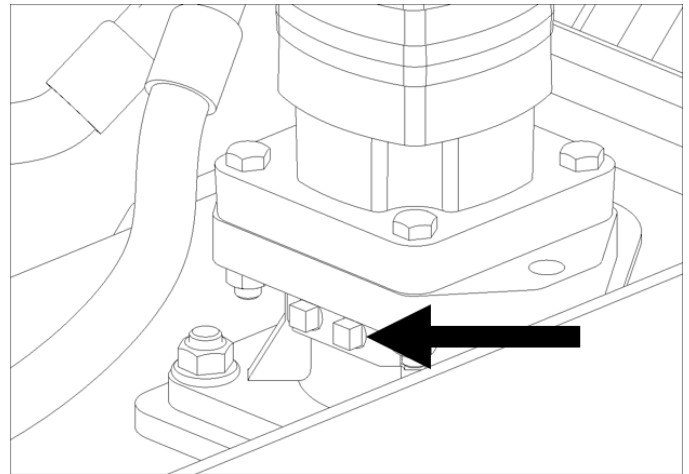
⚠ WARNING To avoid injury or death, before exiting under or servicing under the attachment, be sure to disconnect the auxiliary hydraulic hoses. Raise the lift arms and tilt the attachment down fully. Install an approved lift arm support and stop the engine. Refer to loader's operator's manual for arm support installation instructions.

1. Position the attachment by raising the lift arms and tilting the attachment down. Use an arm lock when working with arms raised. This may require the help of an assistant. Refer to loader's operator's manual for arm locking instructions. Keep the front edge of the attachment within one foot of the ground for debris clean out or blade service.

2. Exit the loader.

⚠ WARNING Always wear eye protection that meets z87.1 when cleaning.

3. Remove the top cover.



4. Use water or a small brush to clean debris from the areas under the cover and around the gearbox.

⚠ WARNING Use care when removing any debris that is wrapped around the blades, stump jumper, or bearing carrier shaft. Blades can rotate suddenly.

5. Reinstall the top cover when clean.

ROUTINE MAINTENANCE

Reversing Blade Rotation

The brush mower is equipped with double sided blades. When the original side gets worn down, the two short hoses can be swapped at the motor to change the direction of rotation. The motor is bi-directional, so it can be run either direction.

NOTE: The top shield will need to be removed to access the motor hose fittings.

When both edges of the blades are excessively worn, replace both blades.

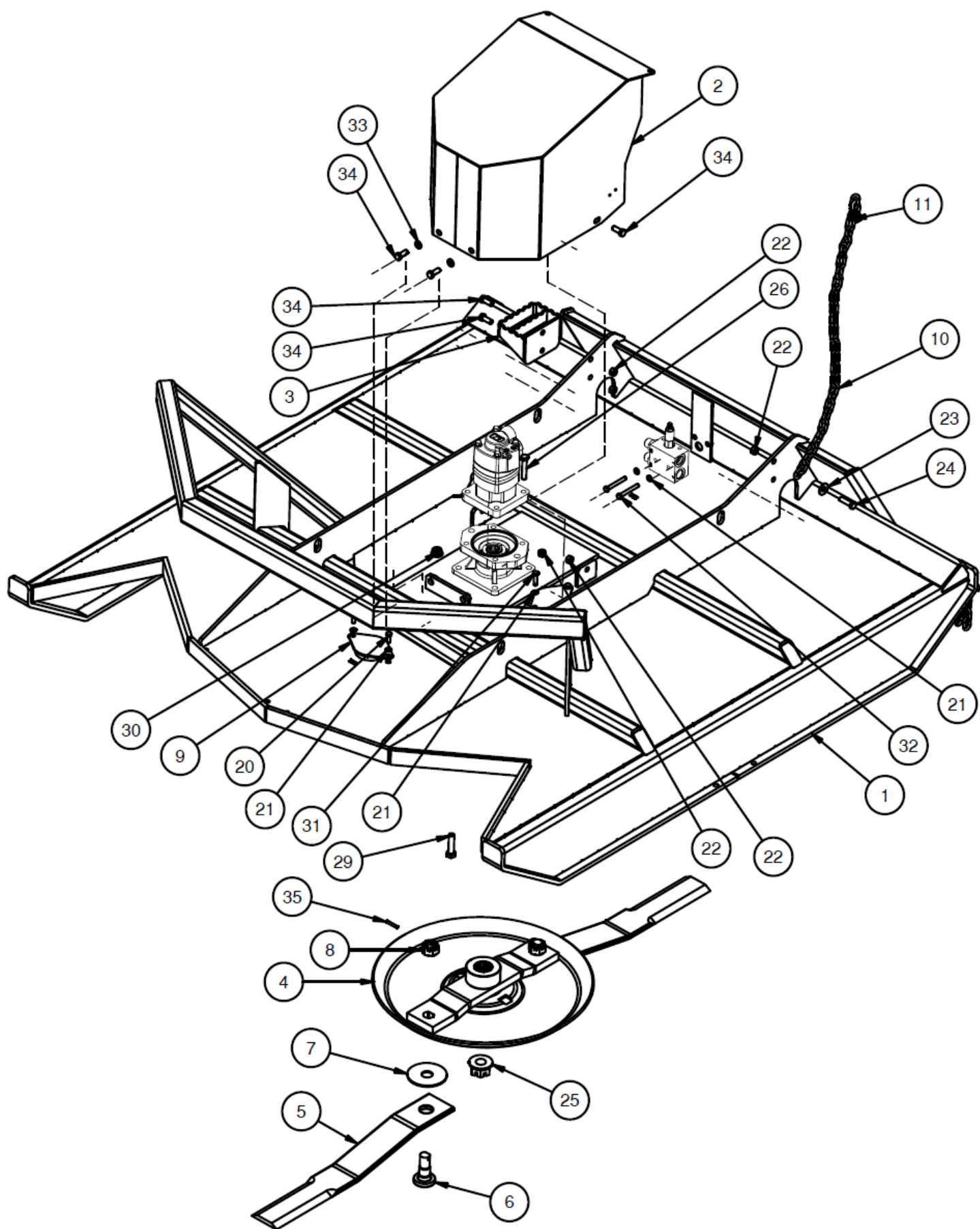
⚠ WARNING Always replace worn blades. Do not sharpen or weld on the blades. Excessively worn blades can break and be thrown hundreds of feet.

IMPORTANT: Always replace both blades with two that are equal in weight to prevent vibration. Always use genuine Erskine™ replacement blades.

BRUSH MOWER UTILITY HEAVY DUTY PARTS INFORMATION

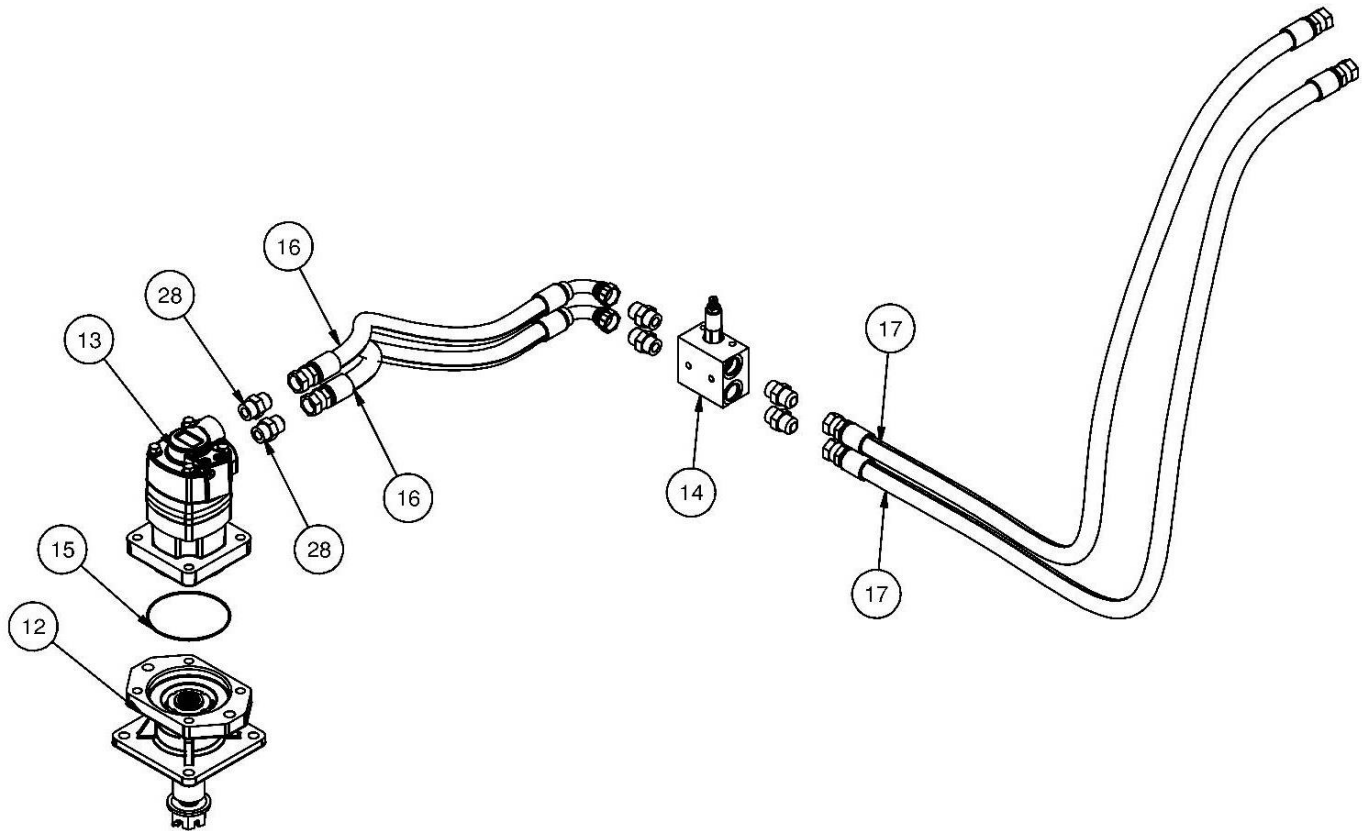
ITEM	QTY	PART NO.	DESCRIPTION	STOCK NO.
1	1	331210	DECK 72 UTILITY MOWER HD V2 W/A	
2	1	340304	COVER MOTOR W/A	
3	1	316420	STEP BOLT ON W/A	
4	1	314059	STUMP JUMPER 15T X 25.25 W/A	UP TO S/N 1127687
	1	350525	STUMP JUMPER 15T X 25.25 HEX W/A	S/N 1127688 +
5	2	314098	BLADE MOWER 72	
6	2	331372	BOLT BLADE D W/HOLE	UP TO S/N 1127687
	2	421489	BOLT BLADE HEX 1-1/8 NF X 3.20	S/N 1127688 +
7	2	314061	WASHER HARD 1.25 ID X 4.50 OD	UP TO S/N 1127687
	2	350504	WASHER 1.137 HEX ID X 4.50 OD	S/N 1127688 +
8	2	331371	NUT HEX SLOTTED 1-1/8 NF GR8	
9	2	314113	COVER BLADE HOLE PAINTED	
10	1	400462	CHAIN LINK 5/16 X 5 FT	
11	1	400463	SHACKLE SCREW PIN 3/8	
20	2	13105	BOLT HEX	3/8 X 1 NC GR 5
21	6	103880	WASHER LOCK	3/8"
22	9	37214	NUT REV LOCK	1/2 NC GR A Z
23	1	33012	WASHER FLAT USS	1/2"
24	1	13210	BOLT HEX	1/2 X 1-3/4 NC GR 5
25	1	120050	NUT CASTLE 1-14 UNS FLGD	
26	4	13214	BOLT HEX	1/2 X 2-3/4 NC GR 5
29	4	15313	BOLT HEX	5/8 X 2-1/2 NC GR 8 YZ
30	4	0167012	NUT TOP LOCK FLNG	5/8 NC GR G (GR8)
31	2	103879	BOLT HEX	3/8 X 1-1/2 NC GR 5
32	2	13115	BOLT HEX	3/8 X 3 NC GR 5
33	2	33626	WASHER LOCK	1/2"
34	6	13207	BOLT HEX	1/2 X 1-1/4 NC GR 5
35	2	331373	ROLL PIN 1/4 X 1-5/8 Z	
99		314110	KIT PARTS BLADE 72"	FOR PARTS ONLY
		350531	KIT PARTS BLADE 72/78 HEX	FOR PARTS ONLY

BRUSH MOWER UTILITY HEAVY DUTY PARTS INFORMATION



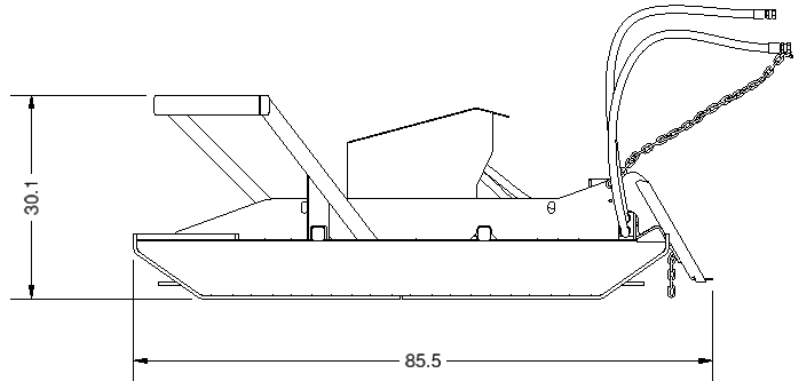
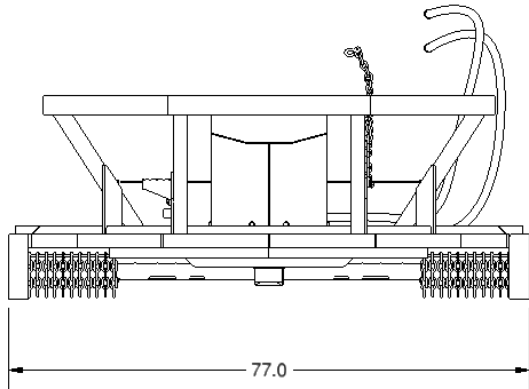
BRUSH MOWER UTILITY HEAVY DUTY PARTS INFORMATION

ITEM	QTY	PART NO.	DESCRIPTION	STOCK NO.
12	1	300815	CARRIER BEARING MDH-40 14T-C	
13	1	300813	MOTOR HYD 6.7CID 4K 14T	
14	1	330973	VALVE ASSM MOWERS RELIEF	
15	1	317301	O-RING 5" ID X 3/32 (-159)	
16	2	331220	HOSE 3/4 X 37 12FJX-12FJX90	VALVE TO MOTOR
17	2	331219	HOSE 3/4 X 84 12FJX-12FJX	LEAD HOSES
28	2	103431	ADPT STR 12MB-12MJ	



GENERAL SPECIFICATIONS

Model	Utility HD Brush Mower V2
Mounting Plate	Universal
Hydraulic Flow Requirements	18 to 30 GPM
Operating Weight	1450 lbs.
Cutting Diameter	72"
Cutter Capacity	Material up to 3"



All dimensions are in INCHES.

Torque-Tension Relationships for SAE J429 Grade Bolts

Nominal Thread Size	SAE J429 Grade 2			SAE J429 Grade 5			SAE J429 Grade 8		
	Clamp Load (lbs)	Tightening Torque		Clamp Load (lbs)	Tightening Torque		Clamp Load (lbs)	Tightening Torque	
		K = .15	K = .20		K = .15	K = .20		K = .15	K = .20
Unified Coarse Thread Series									
1/4-20	1,300	49 in-lbs	65 in-lbs	2,000	75 in-lbs	100 in-lbs	2,850	107 in-lbs	143 in-lbs
5/16-18	2,150	101	134	3,350	157	210	4700	220	305
3/8-16	3,200	15 ft-lbs	20 ft-lbs	4,950	23 ft-lbs	31 ft-lbs	6,950	32.5 ft-lbs	44 ft-lbs
7/16-14	4,400	24	30	6,800	37	50	9,600	53	70
1/2-13	5,850	36.5	49	9,050	57	75	12,800	80	107
9/16-12	7,500	53	70	11,600	82	109	16,400	115	154
5/8-11	9,300	73	97	14,500	113	151	20,300	159	211
3/4-10	13,800	129	173	21,300	200	266	30,100	282	376
7/8-9	11,425	125	166	29,435	321	430	41,550	454	606
1-8	15,000	187.5	250	38,600	482.5	640	54,540	680	900
Unified Fine Thread Series									
1/4-28	1,500	55 in-lbs	75 in-lbs	2,300	85 in-lbs	115 in-lbs	3,250	120 in-lbs	163 in-lbs
5/16-24	2,400	112	150	3,700	173	230	5,200	245	325
3/8-24	3,600	17 ft-lbs	22.5 ft-lbs	5,600	26 ft-lbs	35 ft-lbs	7,900	37 ft-lbs	50 ft-lbs
7/16-20	4,900	27	36	7,550	42	55	10,700	59	78
1/2-20	6,600	41	55	10,200	64	85	14,400	90	120
9/16-18	8,400	59	79	13,000	92	122	18,300	129	172
5/8-18	10,600	83	110	16,300	128	170	23,000	180	240
3/4-16	15,400	144	193	23,800	223	298	33,600	315	420
7/8-14	12,610	138	184	32,480	355	473	45,855	500	668
1-12	16,410	205	273	42,270	528	704	59,670	745	995

Clamp load estimated as 75% of proof load for specified bolts.

Torque values for 1/4 and 5/16 inch series are in inch-pounds. All other torque values are in foot-pounds.

Torque values calculated from formula $T = KDF$

where: $K=0.15$ for "lubricated" conditions

$K=0.20$ for "dry" conditions

LIMITED WARRANTY

Erskine Attachments LLC warrants each new machine manufactured by us to be free from defects in material and workmanship for a period of twenty-four (24) months from date of delivery to the original purchaser.

Our obligation under this warranty is to replace free of charge, at our factory or authorized dealership, any part proven defective within the stated warranty time limit.

All parts must be returned freight prepaid and adequately packaged to prevent damage in transit.

This warranty does not cover:

1. New products which have been operated in excess of rated capacities or negligence
2. Misuse, abuse, accidents or damage due to improperly routed hoses
3. Machines which have been altered, modified or repaired in any manner not authorized by our company
4. Previously owned equipment
5. Any ground engaging tools in which natural wear is involved, i.e. tooth tips, cutting teeth, etc
6. Normal maintenance
7. Fork tines
8. Hydraulic motors that have been disassembled in any manor

In no event will the Sales Representative, Dealership, Erskine Attachments LLC, or any other company affiliated with it or them be liable for incidental or consequential damages or injuries, including but not limited to the loss of profit, rental or substitute equipment or other commercial loss. Purchaser's sole and exclusive remedy being as provided here in above.

Erskine Attachments LLC must receive immediate notification of defect and no allowance will be made for repairs without our consent or approval.

This warranty is in lieu of all other warranties, express or implied by law or otherwise, and there is no warranty of merchantability or fitness purpose.

No agent, employee, or representative of Erskine Attachments LLC has any authority to bind Erskine Attachments LLC to any warranty except as specifically set forth herein. Any of these limitations excluded by local law shall be deemed deleted from this warranty; all other terms apply.

This warranty may not be enlarged or modified in any manner except in writing signed by an executive officer of Erskine Attachments LLC to improve its products whenever it is possible and practical to do so. Erskine Attachments LLC reserves the right to make changes and or add improvements at any time without incurring any obligation to make such changes or add such improvements to products previously sold.

Erskine Attachments LLC
P.O. Box 1083 Alexandria, MN 56308
Phone (218) 435-4045 Fax (218) 435-5293



P/N 331225-B
Erskine Attachments LLC

Date Printed: 6/16/2022
Printed in U.S.A.