



Forestry Mulching Mower

For

Skid Steer Loaders

Operator's Manual
Maintenance
Parts Information



Read this Manual Before Use

SAFETY	3-4
SERIAL NUMBER/DECAL LOCATION	5-6
MOUNTING INSTRUCTIONS	7-8
OPERATING INSTRUCTIONS	9-11
ROUTINE MAINTENANCE	12-14
BOLT TORQUE INFORMATION	15
PARTS INFORMATION	16-20
GENERAL SPECIFICATIONS	21
TROUBLESHOOTING	22
WARRANTY	23

REFERENCE INFORMATION

Write the serial number for your attachment in the spaces below. Always refer to this serial number when calling for service or parts.

Serial Number....._____

YOUR ATTACHMENTS DEALER

ADDRESS:

PHONE:

CONTACT:

NOTE: Erskine Attachments LLC reserves the right to make improvements in design or changes in specifications at any time without notice and without incurring any obligations to install them on units previously sold.

SAFETY

DO NOT perform maintenance on this machine until this manual has been read and understood. In addition, read the Operation and Maintenance Manual(s) pertaining to the attachment and the attachment carrier (“Loader”).

The user is responsible for inspecting the machine daily, and for having parts repaired or replaced when continued use of the machine would cause damage, excessive wear to other parts or make the machine unsafe for continued operation.

If an operating procedure, tool device, maintenance or work method not specifically recommended is used, you must satisfy yourself that it is safe for you and others. You must also ensure that the attachment will not be damaged or made unsafe by the procedures you choose.

Erskine Attachments LLC cannot anticipate every possible circumstance that might involve potential hazard. The safety messages found in this manual and on the machine are therefore not all inclusive.

The signal words **CAUTION**, **WARNING**, or **DANGER** are used to indicate hazards.

⚠ CAUTION Indicates a potentially hazardous situation which, if not avoided, may result in minor or moderate injury.

⚠ WARNING Indicates a potentially hazardous situation which, if not avoided, could result in death or serious injury.

⚠ DANGER Indicates a potentially hazardous situation which, if not avoided, will result in death or serious injury.

The word **IMPORTANT** is used in the text when immediate damage will occur due to improper technique or operation.

The word **NOTE** is used to convey information that is out of context with the manual text; special information such as specifications, techniques, reference information, and other information of a supplementary nature.

Improper operation can cause serious injury or death.

Pre-operation

- This attachment is designed to cut and mulch brush and small trees. **NEVER** use this machine for any other purpose.
- To protect the operator, the loader must be fitted with approved Forestry Door, Forestry Kit, and Level II Falling Object Protective Structure (FOPS) Kit.
- Read the operator's manual for the "Skid Steer Loader." **NEVER** allow untrained people to operate.
- Operating instructions must be given to everyone before operating this attachment and at least once a year thereafter in accordance with OSHA regulations.
- **NEVER** exceed the maximum recommended input power or speed specifications for the attachment. Over-powering or over-speeding the attachment may cause personal injury and/or machine damage.
- Keep all shields, guards, and covers in place.
- Do not modify equipment or add attachments that are not approved by Erskine Attachments LLC.
- Use adequate safety warning lights and devices as required by local regulations. Obey all local laws and regulations regarding machine operation on public property.

Operation

- Hydraulic connections may be hot after use. Use gloves if connecting or disconnecting after use.
- Check and be sure all operating controls are in neutral before starting the engine.
- Depending on how this attachment is used, dust can be created. Prolonged exposure to dust can cause chronic and acute health problems. A NIOSH-approved respirator may be required.
- Keep people away from loader, attachment and discharge when in use. This attachment sends objects flying and has rotating parts. **NEVER** direct discharge toward people – rocks and debris can be thrown hundreds of feet.

Operation (continued)

- **NEVER** operate near embankments or terrain that is so steep that rollover could occur.
- Always stay in the operator position when using the attachment.
- Before leaving the operators position, disengage hydraulic drive, lower the attachment to rest flat on the ground, stop engine, set park brake, and wait for all motion to stop. Even after disconnecting the hydraulic drive, the disc will continue to spin for several minutes. Do not leave the operator's position until the disc is stopped. Do not allow other people to approach the attachment while the disc is spinning.
- **NEVER** place hands in the discharge area or clear debris while the engine is running.

Avoid High Pressure Fluids Hazard



- Escaping fluid under pressure can penetrate the skin causing serious injury.
- Avoid the hazard by relieving the pressure before disconnecting hydraulic lines.
- Use a piece of paper or cardboard, NOT BODY PARTS, to check for suspected leaks. Wear protective gloves and safety glasses or goggles when servicing or performing maintenance on hydraulic systems.
- If an accident occurs, see a doctor immediately. Any fluid injected into the skin must be surgically removed within a few hours or gangrene may result.

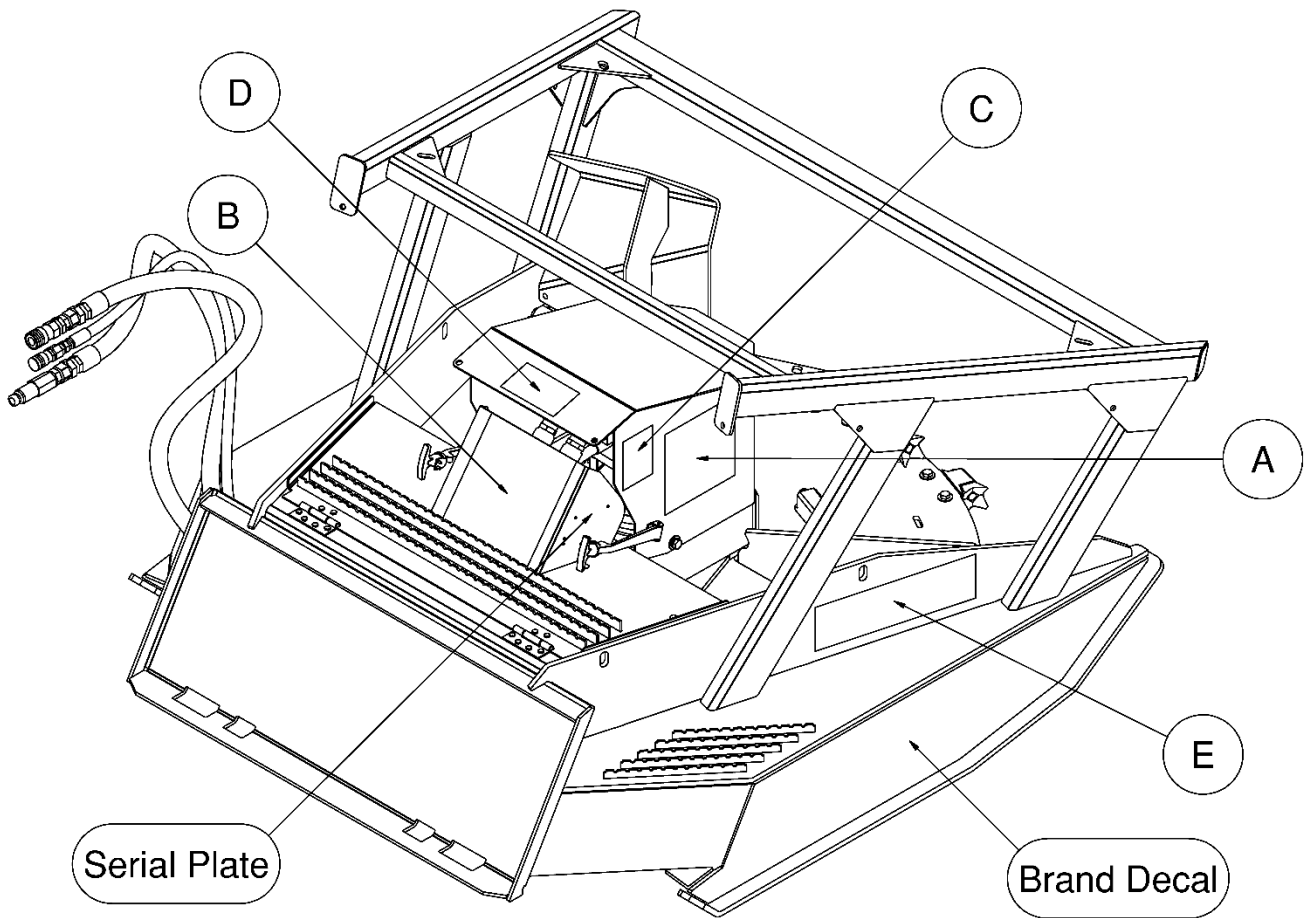
Maintenance

- **NEVER** make adjustments, lubricate, clean, or perform any service on the machine while it is in operation.
- Make sure the attachment is serviced on a daily basis. Improper maintenance can cause serious injury or death in addition to damage to the attachment and/or your equipment.

SERIAL NUMBER AND SAFETY DECAL LOCATIONS

Serial Number Location:

It is important to refer to the serial number of the attachment when making repairs or ordering parts. Early or later models (identification made by serial number) may use different parts, or it may be necessary to use different procedures in doing a specific operation.



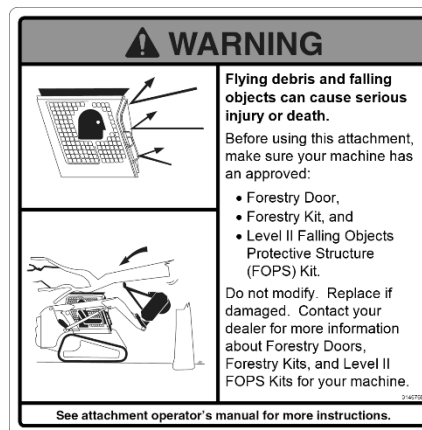
SERIAL NUMBER AND SAFETY DECAL LOCATIONS

(A)



Part Number: 316078
Location: Each side of motor shield
Quantity: 2

(B)



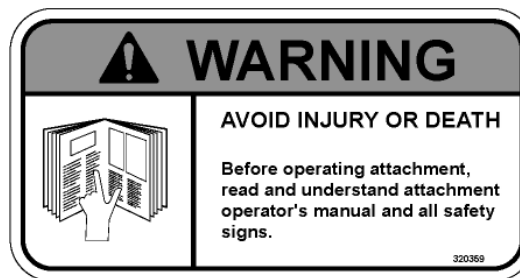
Part Number: 314676
Location: On back of rear shield
Quantity: 1

(C)



Part Number: 200001
Location: Top of rear cover
Quantity: 1

(D)



Part Number: 320359
Location: Top of motor shield
Quantity: 1

(E)



Part Number: 400493
Location: One each rib
Quantity: 2

Large Brand Decal
Location: Each side of deck and top of motor shield
Quantity: 3

Safety Decals Locations:
 The locations of the safety decals are shown. If these decals are missing, damaged, or painted over they must be replaced. Call Erskine Attachments LLC (218-435-4045) for replacement decals.

MOUNTING INSTRUCTIONS

After uncrating the attachment, use the following procedure to mount the attachment to the loader.

⚠ WARNING Coupler wedges or pins must extend through the holes in attachment. Levers must be fully down and locked. Failure to secure wedges or pins can allow attachment to come off and cause injury or death.



1. Use the step, safety treads, and grab handles to get on and off the loader and attachment.
2. Sitting in the operator's seat, lower seat bar and fasten the seat belt.
3. Drive the loader to the rear of the attachment. Put the loader quick attach coupler into the attachment mounting bracket.
4. Tilt the loader coupler backward a small amount until it is fully engaged in the brush mower mounting bracket.
5. If you have manual levers, stop the engine and engage the park brake. If not, proceed to step 6.
6. Secure the coupler locking mechanism that attaches the attachment to the loader.
7. Connect the hydraulic quick couplers from the attachment to the loader.

IMPORTANT: Wipe the ends of the hydraulic quick couplers (both lead and loader) with a rag to remove any possible contamination. Contamination can cause hydraulic components to fail and is not covered under warranty.

IMPORTANT: Make sure the quick couplers are fully engaged. If the quick couplers do not fully engage, check to see that the couplers are the same size and brand. Do not force the quick couplers together.

IMPORTANT: You must connect the small, third hose which is the case drain hose, or you will permanently damage the hydraulic motor.

NOTE: See the loader's operator's manual for further instructions.

NOTE: Attachment is shipped with 16FJX (1-5/16" Female JIC swivel) fittings on the ends of the lead hoses and 8FJX (3/4" Female JIC swivel) on the case drain hose.

MOUNTING INSTRUCTIONS

8. Make sure the hoses are properly routed to fit your specific loader. If the hoses are not routed correctly, hoses may get pinched or rub on tires or tracks. Be sure to check the hose routing through the full range of intended motion of the attachment before operating it.

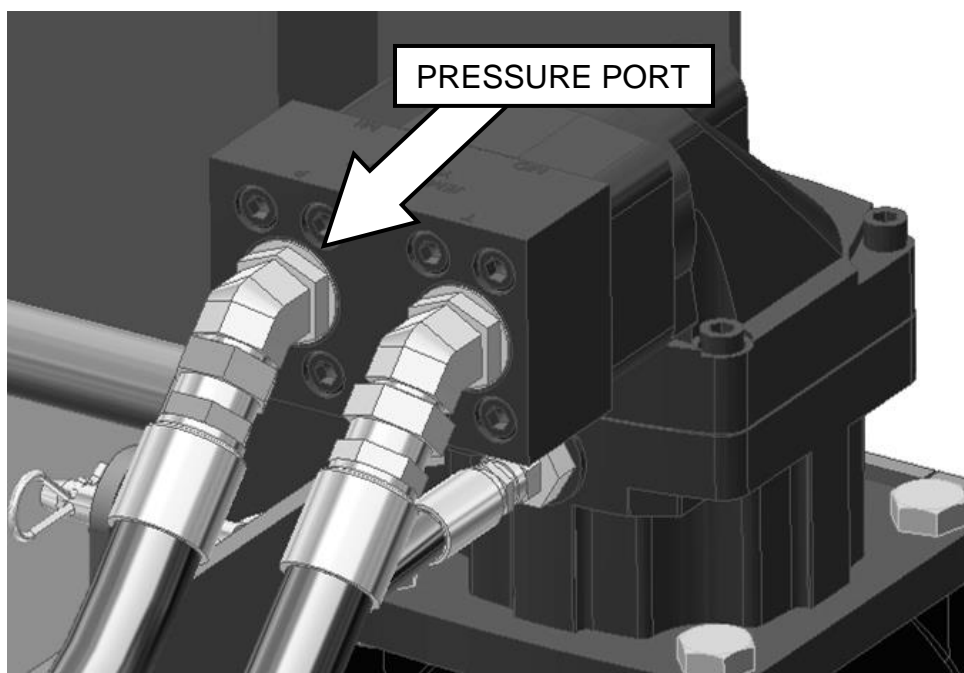
More than one routing may be acceptable depending on the loader. Pick the routing that best suits your loader.

IMPORTANT: Proper hose routing is the responsibility of the owner and/or operator. Pinched or stretched hoses are not covered under warranty.

Mounting is now complete and you are ready to use the attachment. Use reverse order of above instructions to dismount the attachment from the loader.

NOTE: Make sure the pressurized hose is routed to the “P” (Pressure) port of the motor valve block. If it isn't, the attachment will not operate properly. The proper hose to pressurize has PRESSURE printed on the outer cover and/or a red cable tie on the end.

If you are operating the loader controls correctly and the mulcher still does not work, try switching the hydraulic couplers around on the mulcher lead hoses. This will effectively reverse the flow to the motor.



OPERATING INSTRUCTIONS

⚠ WARNING To avoid serious injury or death, keep people away from the loader and attachment when in use. The attachment can drop trees and limbs in unpredictable directions. Make sure there are no people, power lines, buildings, or other objects that could be in the fell zone. Never cut trees that could fall into these objects. Loader must be equipped with approved Forestry Door, Forestry Kit, and Level II Falling Object Protective Structure (FOPS) Kit.

IMPORTANT: Before operating the attachment, perform the service schedule for routine maintenance.

IMPORTANT: Certain materials can wrap around parts of the attachment or cause other damage. Avoid contacting materials like: metal wire, hoses, ropes, tarps, mattresses, rugs, or plastics.

IMPORTANT: Certain land features can cause damage. Inspect the cutting area and avoid obstructions like drop offs, holes, rocks, debris, etc.

1. With the operator in the seat of the loader, the seat belt fastened and the seat bar lowered (if so equipped), start the engine.
2. With the loader boom lowered completely, mulcher deck tipped back 0 to 10 degrees and engine at low idle, activate the auxiliary hydraulic system to start the disc rotation. Make sure auxiliary hydraulic circuit is operating in the High Flow mode. It can take up to 45 seconds for the disc to spin up to full speed if starting from a dead stop.

IMPORTANT: The attachment is designed to operate from 33 to 45 gpm. Operating at higher flow rates can cause serious damage to the mulching head and will void the warranty.

IMPORTANT: Do not operate the attachment if excessive vibration is present or serious damage can occur. Check to make sure that there is not debris lodged between the teeth.

IMPORTANT: To prevent hydraulic system damage when operating in temperatures below 40°F, allow attachment to run with engine at idle for at least 10 minutes to warm oil before slowly increasing to operating speed.

NOTE: Certain loaders may not operate in high flow mode without a special wire harness. Others require the control switches to be operated in a specific way. It may also be necessary to switch the hose couplers around to match your loader. (See loader's operator's manual.)

Mulching Trees Larger than 6"

1. First, you must decide if you can mulch the standing tree as one piece, based on the trunk diameter. If more than 6" diameter, use the procedure below.
2. Cut the tree off between 0 and 3 feet above the ground to minimize the chance of accidental ingestion into the mulching chamber.

⚠ WARNING Always keep the attachment low and slightly tilted back so that you are not exposed to flying debris

3. Maintain pressure on the tree with the push bar while you cut so the tree falls away from you.
4. Once on the tree has fallen, grind the remaining standing portion using the teeth on the bottom of the disc. Then proceed to mulch the limbs of the tree either from the side or while straddling the tree trunk.
5. For trees that are somewhat straight, you can cut the top off and try to ingest that as one piece if it is smaller than 6" diameter. To do this, straddle the tree with the front of the deck angled down slightly and drive forward while lowering the deck onto the tree. Make sure you don't try to ingest such a large portion of the tree that it plugs the mulcher. Keep the tree trunk between the 12 o'clock and 2 o'clock position on the disc for best results.
6. For the trunk portion of the tree, use the teeth on the bottom and edge of the disc to grind away successive layers of material. You will need to pause briefly after each cut to allow the disc to speed up again. It usually works best to approach the tree from the bottom end

NOTE: The type of wood being cut, available horsepower and the ground conditions will determine the best ground speed and cutting procedure.

IMPORTANT: While this attachment has been designed to handle the extreme loads associated with mulching whole trees, every machine has its limits. Due to the large amount of spinning mass and high speed of the disc, the operator must use care not to ingest pieces of tree trunk larger than 10" diameter, as this could overload the spindle. Any spindle damage is considered to be the result of operator abuse, and is not covered under warranty.

OPERATING INSTRUCTIONS

Mulching Trees Smaller than 6"

1. First, you must decide if you can mulch the standing tree as one piece, based on the trunk diameter. If the tree is a softwood of 6" diameter or less (5" diameter or less for hardwood), use the procedure below.
2. To properly mulch an entire tree, make sure the disc is spinning at maximum RPM. This may take up to 45 seconds if starting from a dead stop. With the mulcher tipped back at a 20 to 45-degree angle, raise the front of the mulcher about 3 feet to 6 feet off the ground. Position the mulcher so the tree is in the disc ingestion zone (between the 12 o'clock and 2 o'clock position) Then slowly move into the tree and slowly raise the loader arms to ingest the top portion.

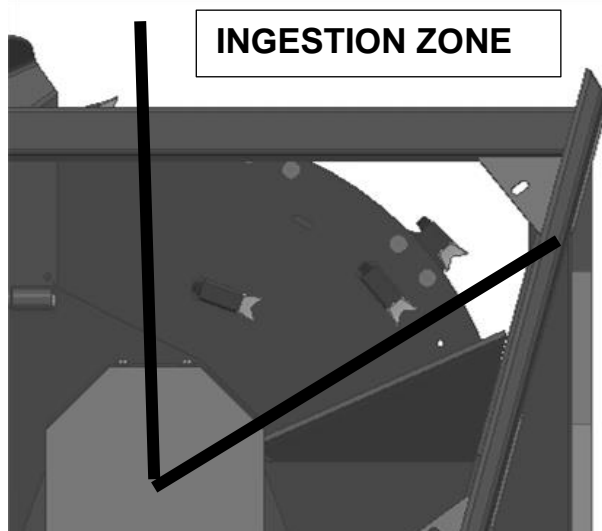
⚠ WARNING Always keep the attachment tilted back so that you are not exposed to flying debris

3. Once the tree top is cut off and the disc speed has recovered to full RPM, lower the attachment slowly over the remaining tree trunk to mulch it. If you lower the attachment too quickly you may stall the disc. You may need to drive forward and backward a small amount to ensure the teeth on the bottom of the disc are engaging the tree trunk.
4. If the tree falls to the ground without being ingested directly into the top of the disc, you can still process the tree in one piece. To do this, position yourself parallel to the tree trunk and facing the bottom end. Lower the front of the mulcher deck to the ground and feed the lower end into the ingestion zone of the disc.



NOTE: When shutting down the attachment, the inertia of the disc will cause it to continue spinning for several minutes after the hydraulic drive is disengaged. To stop the disc faster, grind a stump with the hydraulic drive disengaged.

⚠ WARNING Before leaving the operators position, disengage hydraulic drive, lower the attachment to rest flat on the ground, stop engine, set park brake, and wait for all motion to stop. Even after disengaging the hydraulic drive, the disc will continue to spin for several minutes. Do not leave the operator's position or allow other people to approach the attachment until the disc has stopped.



OPERATING INSTRUCTIONS

Removing Material from a Clogged Disc

It is possible to plug the disc under certain circumstances. These include ingesting too large of a tree, ingesting a tree before the disc reaches maximum RPM or ingesting more material than you intended (i.e. two small trees at once).

If the disc becomes plugged, use the following steps to clear the debris.

Option 1: Removal by hand

⚠ WARNING Teeth and debris can be sharp. Wear gloves to protect your hands.

⚠ WARNING To avoid injury or death, never put hands, feet, head, or objects in front of the attachment when engine is running or when there is an operator in the loader.

1. Lower the deck to the ground, stop the engine, engage the park brake and exit the loader.
2. Manually remove built-up material from around the disc. Pull in the direction that unwinds the debris if possible.

Option 2: Rub against standing tree

1. Locate a stout standing tree.

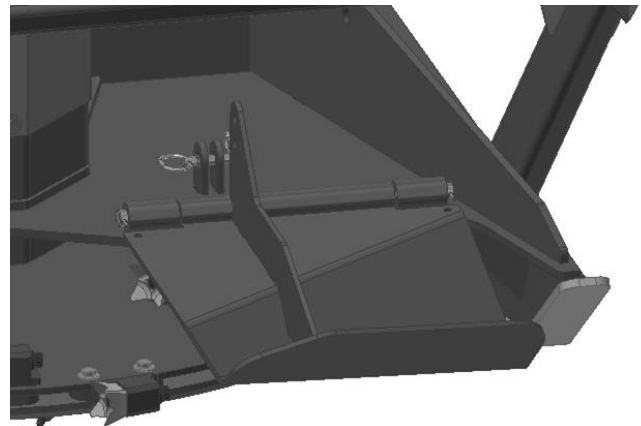
NOTE: This will damage the tree bark, so only rub on a tree that you do not want to keep.

2. With the auxiliary hydraulics turned off, tilt the mulcher deck back to an angle between 0 and 30 degrees and press the front edge of the disc against the tree trunk.
3. Keeping the disc in contact with the tree, turn to the loader to the right (causing the disc to turn in a counter-clockwise direction) to “unwind” the plug. Repeat this step until the debris is loose enough to remove by hand.
4. Lower the deck to the ground, stop the engine, engage the park brake and exit the loader.
5. Manually clear the debris from the disc once loosened.

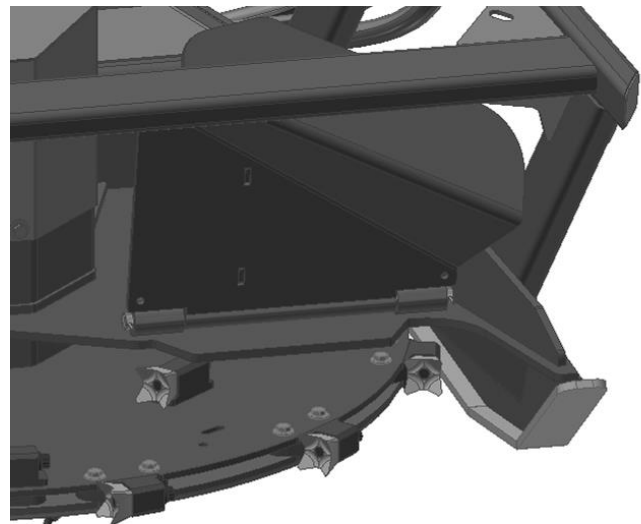
Front Shield Position

⚠ WARNING To avoid injury or death, never put hands, feet, head, or objects in front of the attachment when engine is running or when there is an operator in the loader.

The deck is equipped with a front deflector shield which is intended to impede the flow of debris leaving the disc and reduce the chances of debris flying long distances. The shield should be left in the down position during normal operation. However, it can be lifted and pinned in the up position to gain access to the teeth for service or if needed to remove any debris lodged in the disc.



“Down” Operating Position



“Up” Maintenance Position

ROUTINE MAINTENANCE



WARNING! Lower the attachment to rest on the skid shoes, shut down the engine, relieve the hydraulic pressure to the attachment, wait for all motion to stop, and set park brake before leaving the operator's seat to perform service of any kind.

It is the operator's responsibility to make daily inspections of the attachment and loader for damage, loose bolts, fluid leaks, or anything else that could cause a potential service or safety problem. Preventive maintenance is the easiest and least expensive type of maintenance.

IMPORTANT: Bolts and set screws can loosen after initial usage. After first hour of operation check all bolts and set screws. This must also be done daily before operation. If nuts or bolts are missing or damaged, replace immediately.

IMPORTANT: Fluids such as engine oil, gear lube, and hydraulic fluid must be disposed of in an environmentally safe manner. Some regulations require that certain spills and leaks be cleaned in a specific manner. Check local, state, and federal regulations for the correct disposal.

DAILY INSPECTION

Follow the mulching mower service schedule for routine maintenance. Check the following items every **4 hours** of operation:



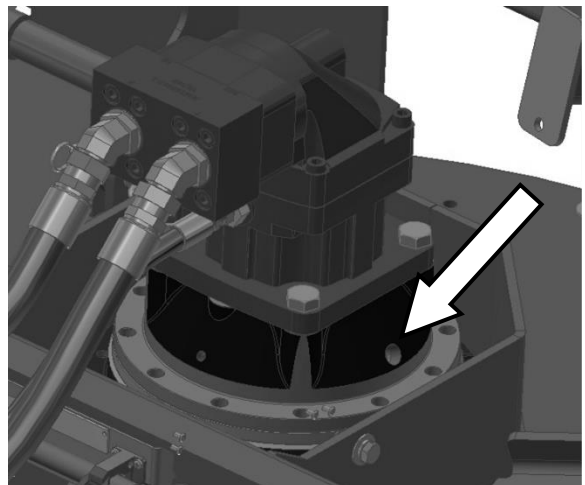
1. Check teeth for cracks or excessive damage. Replace if necessary.
2. Check entire attachment for weld cracks or excessive damage. Replace if necessary.
3. Check teeth mounting hardware for proper torque of 200 ft.-lbs. (270Nm).
4. Check all hardware. Retighten if necessary.
5. Check shields. Repair if damaged or replace if necessary.
6. Check for damaged or missing decals. Replace if damaged or missing.
7. Check for damaged or leaking hydraulic hoses or fittings. Replace or tighten.
8. Clean debris, leaves, grass, and flammable material from main frame area and under covers.

Check the oil level in the bearing carrier every **100 hours** of operation. To check the oil, remove the motor shield. Remove one of the large plugs on the top of the bearing housing cover. Use a long slender device, like a screwdriver, to check that the oil is about $\frac{1}{2}$ " from the bottom of the plug hole. Reinstall the motor cover when complete.

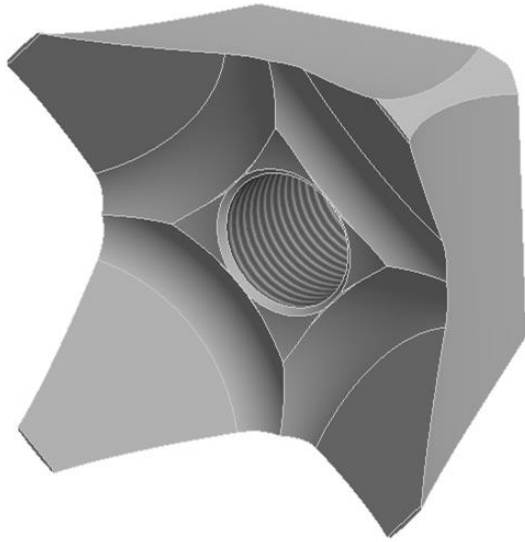
Change the oil after the first **100 hours** of operation. Change the oil **annually** or every **1000 hours** of operation thereafter, whichever comes first. To change the oil, lift the rear cover and put a container under the end of the oil drain hose. Tilt the front end of the mulcher up as far as possible to aid in the draining of the oil.

⚠ WARNING To avoid injury or death, support the front end of the mulcher with blocks or jack stands after tilting it back.

Remove the plug in the end of the drain hose to start the oil draining. A small percentage of the oil will remain in the case when the flow stops. Replace the drain hose plug. Lower the mulcher to a level orientation and refill with new oil until the oil level is about $\frac{1}{2}$ " below the bottom of the fill hole. The oil type is 80w-90 and the capacity is about 110 oz. (3.4 qt.) if completely empty.



ROUTINE MAINTENANCE



Four-point tooth

Four-Point Tooth Removal

⚠ WARNING New and used teeth can be sharp. Wear gloves to protect your hands.

1. Make sure lead hoses are disconnected from loader before working on attachment. Connect the attachment hydraulic couplers together if you want to turn the disc by hand.

2. Remove the tooth locking bolt and tooth, and set aside.

NOTE: Tooth may fall from the holder when removing the tooth locking bolt. Always support the tooth while removing the bolt.

3. Continue to do this in a directional manner until all the teeth are removed from the disc.

4. Once all the teeth are removed from the disc, inspect the disc and holders for excessive wear or cracking.

NOTE: Check that the disc can turn freely. Also check teeth, mounting hardware, and disc for wear, cracking, or breakage, which can cause excessive vibrations. Replace if damaged.

Four-Point Tooth Installation

1. If replacing teeth, always use a new bolt during assembly.

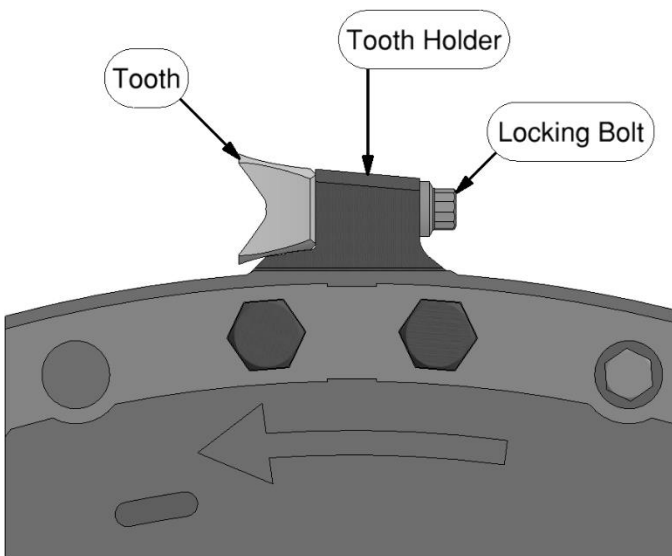
2. Apply anti-seize compound to the bolt threads.

3. Insert tooth locking bolt through tooth holder, and thread into tooth. Make sure to install the teeth on the front side of the tooth holders to ensure proper operation.

4. Tighten the bolt to 200 ft. lbs. (270 Nm) of torque.

5. Repeat procedure until all teeth have been replaced.

NOTE: If a few of the teeth are damaged and a small vibration occurs, it is sometimes possible to rearrange the teeth to reduce the vibration. This is done by putting equal amounts of broken teeth on opposite sides of the disc. A small amount of vibration is acceptable and normal. Always use genuine Erskine™ replacement teeth.



ROUTINE MAINTENANCE

Rotating Four-Point Teeth

1. When the original side gets worn down or chipped, the tooth can be turned either 90 or 180 degrees to expose fresh cutting surfaces on the tooth. Alternately, the four-point teeth can be lightly sharpened using a flat disc grinder to bring an edge back. Keep in mind that you are removing the hard surface from the face of the tooth, so do not grind too much.

IMPORTANT: Do not weld on the teeth. Modified teeth may break during operation.

2. After rotating the tooth, re-torque the locking bolt to 200 ft.-lbs. If bolts are damaged, replace them.

NOTE: If you reposition or replace worn teeth on the disc, be sure to do the same to the tooth on the opposite side of the disc to maintain disc balance.

Cleaning the Attachment

1. Position the attachment flat on the ground.

⚠ WARNING To avoid injury or death, never service the attachment in the raised position. Always service with the attachment sitting flat on the ground or supported by an approved lifting device or blocks.

2. Remove the top shields to access the motor cavities.
3. Use low pressure water or a small brush to remove any unwanted dirt and debris.

⚠ WARNING Use care when removing any debris wrapped around the teeth or disc. Disc can rotate suddenly.

4. Reinstall shields when complete.

BOLT TORQUE INFORMATION

Torque-Tension Relationships for SAE J429 Grade Bolts

Nominal Thread Size	SAE J429 Grade 2			SAE J429 Grade 5			SAE J429 Grade 8		
	Clamp Load (lbs)	Tightening Torque		Clamp Load (lbs)	Tightening Torque		Clamp Load (lbs)	Tightening Torque	
		K = .15	K = .20		K = .15	K = .20		K = .15	K = .20
Unified Coarse Thread Series									
1/4-20	1,300	49 in-lbs	65 in-lbs	2,000	75 in-lbs	100 in-lbs	2,850	107 in-lbs	143 in-lbs
5/16-18	2,150	101	134	3,350	157	210	4,700	220	305
3/8-16	3,200	15 ft-lbs	20 ft-lbs	4,950	23 ft-lbs	31 ft-lbs	6,950	32.5 ft-lbs	44 ft-lbs
7/16-14	4,400	24	30	6,800	37	50	9,600	53	70
1/2-13	5,850	36.5	49	9,050	57	75	12,800	80	107
9/16-12	7,500	53	70	11,600	82	109	16,400	115	154
5/8-11	9,300	73	97	14,500	113	151	20,300	159	211
3/4-10	13,800	129	173	21,300	200	266	30,100	282	376
7/8-9	11,425	125	166	29,435	321	430	41,550	454	606
1-8	15,000	187.5	250	38,600	482.5	640	54,540	680	900
Unified Fine Thread Series									
1/4-28	1,500	55 in-lbs	75 in-lbs	2,300	85 in-lbs	115 in-lbs	3,250	120 in-lbs	163 in-lbs
5/16-24	2,400	112	150	3,700	173	230	5,200	245	325
3/8-24	3,600	17 ft-lbs	22.5 ft-lbs	5,600	26 ft-lbs	35 ft-lbs	7,900	37 ft-lbs	50 ft-lbs
7/16-20	4,900	27	36	7,550	42	55	10,700	59	78
1/2-20	6,600	41	55	10,200	64	85	14,400	90	120
9/16-18	8,400	59	79	13,000	92	122	18,300	129	172
5/8-18	10,600	83	110	16,300	128	170	23,000	180	240
3/4-16	15,400	144	193	23,800	223	298	33,600	315	420
7/8-14	12,610	138	184	32,480	355	473	45,855	500	668
1-12	16,410	205	273	42,270	528	704	59,670	745	995

Clamp load estimated as 75% of proof load for specified bolts.

Torque values for 1/4 and 5/16 inch series are in inch-pounds. All other torque values are in foot-pounds.

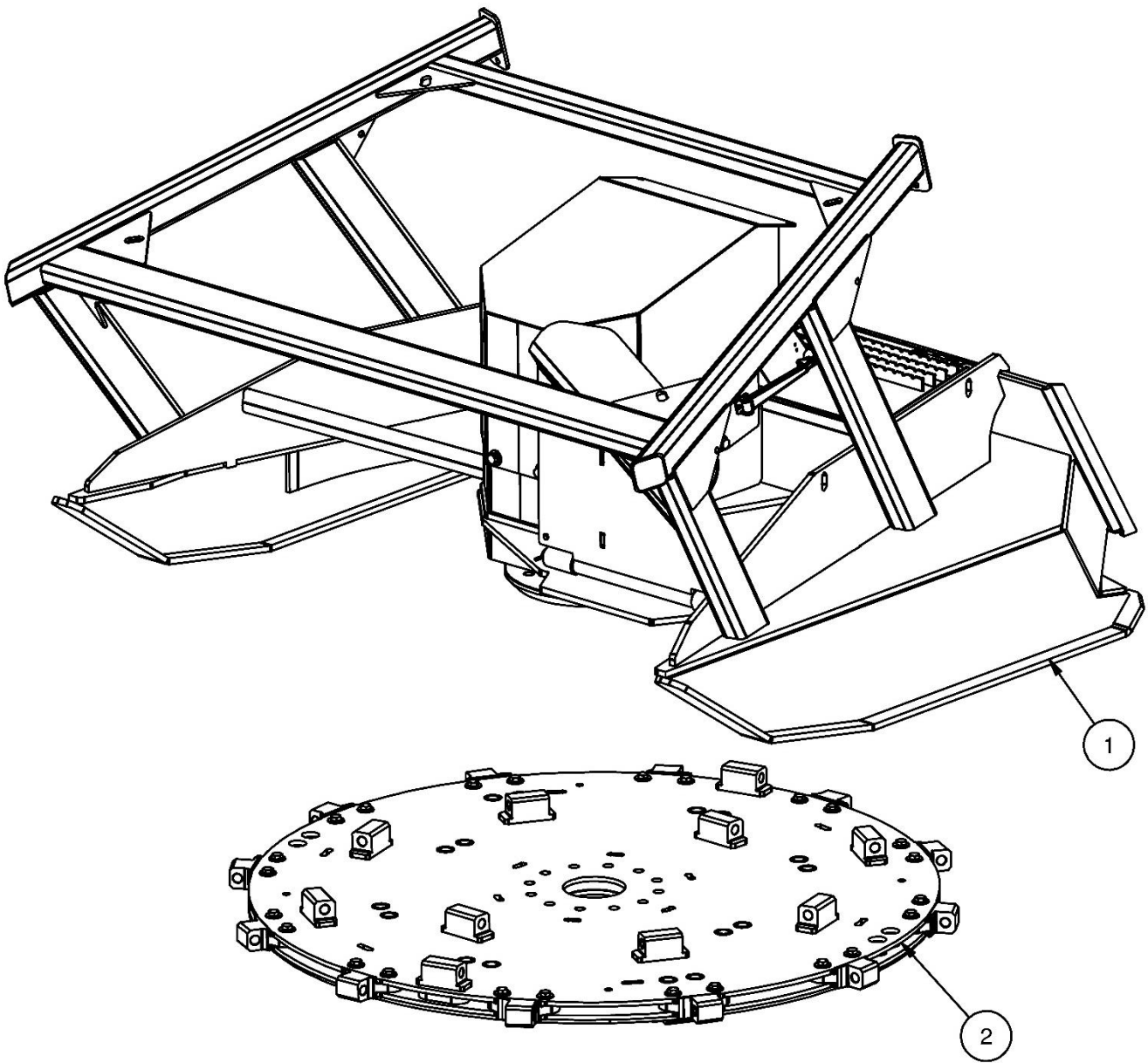
Torque values calculated from formula $T = KDF$

where: $K=0.15$ for "lubricated" conditions

$K=0.20$ for "dry" conditions

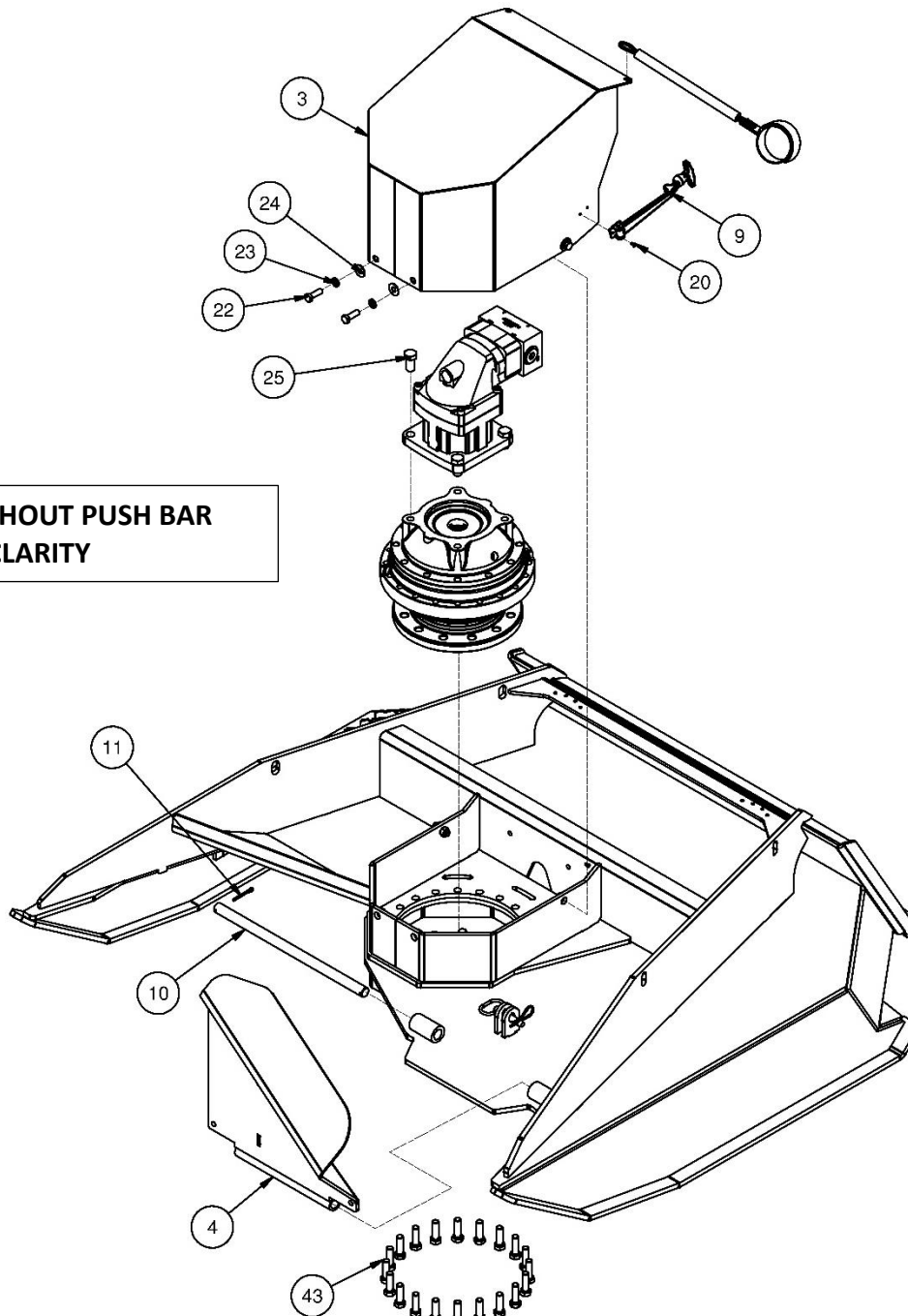
FORESTRY MULCHING MOWER PARTS INFORMATION

ITEM	QTY	PART NO.	DESCRIPTION	STOCK NO.
1	1	340204	DECK MULCHING MOWER W/A	
2	1	340207	DISC MULCHER 2 W/A	REPLACED 340203
	1	340203	DISC MULCHER W/A (NO TEETH INCL)	OBSOLETE



FORESTRY MULCHING MOWER PARTS INFORMATION

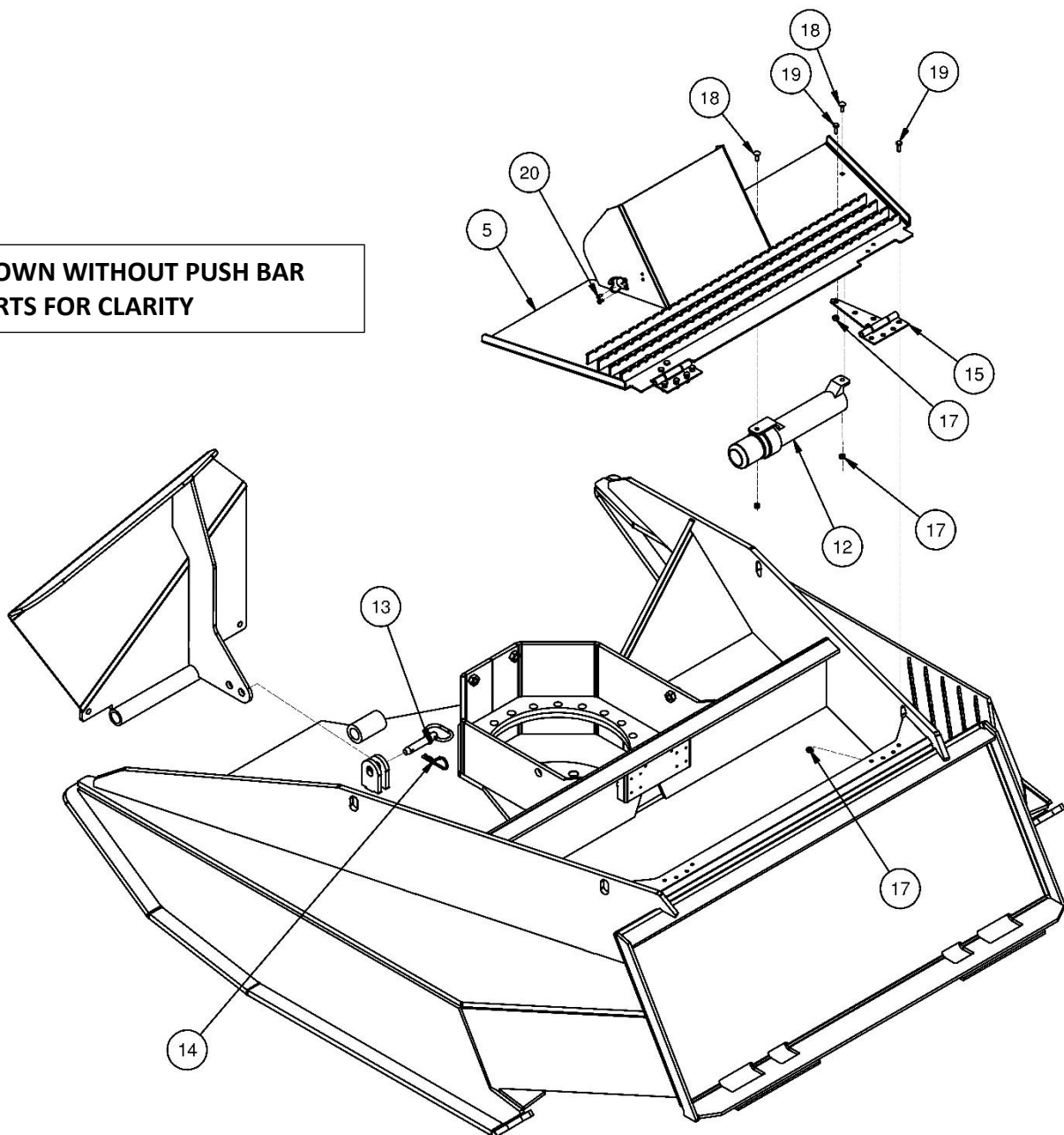
ITEM	QTY	PART NO.	DESCRIPTION	STOCK NO.
3	1	340304	COVER MOTOR W/A	
4	1	340341	DEFLECTOR MULCHER W/A	
9	2	340318	LATCH RUBBER 10.5 W/BACKET	
10	1	340339	PIN 1 X 20 W/H Z	
11	2	65127	PIN COTTER 3/16 X 2	
20	8	41125	RIVET 3/16 STEEL #64	
22	4	13209	BOLT HEX	1/2 X 1-1/2 NC GR 5
23	4	33626	WASHER LOCK	1/2"
24	4	33010	WASHER FLAT	7/16"
25	4	15361	BOLT HEX (USE THREADLOCKER)	3/4 X 2 NC GR 8 YZ
43	20	15311	BOLT HEX	5/8 X 2 NC GR 8 YZ



FORESTRY MULCHING MOWER PARTS INFORMATION

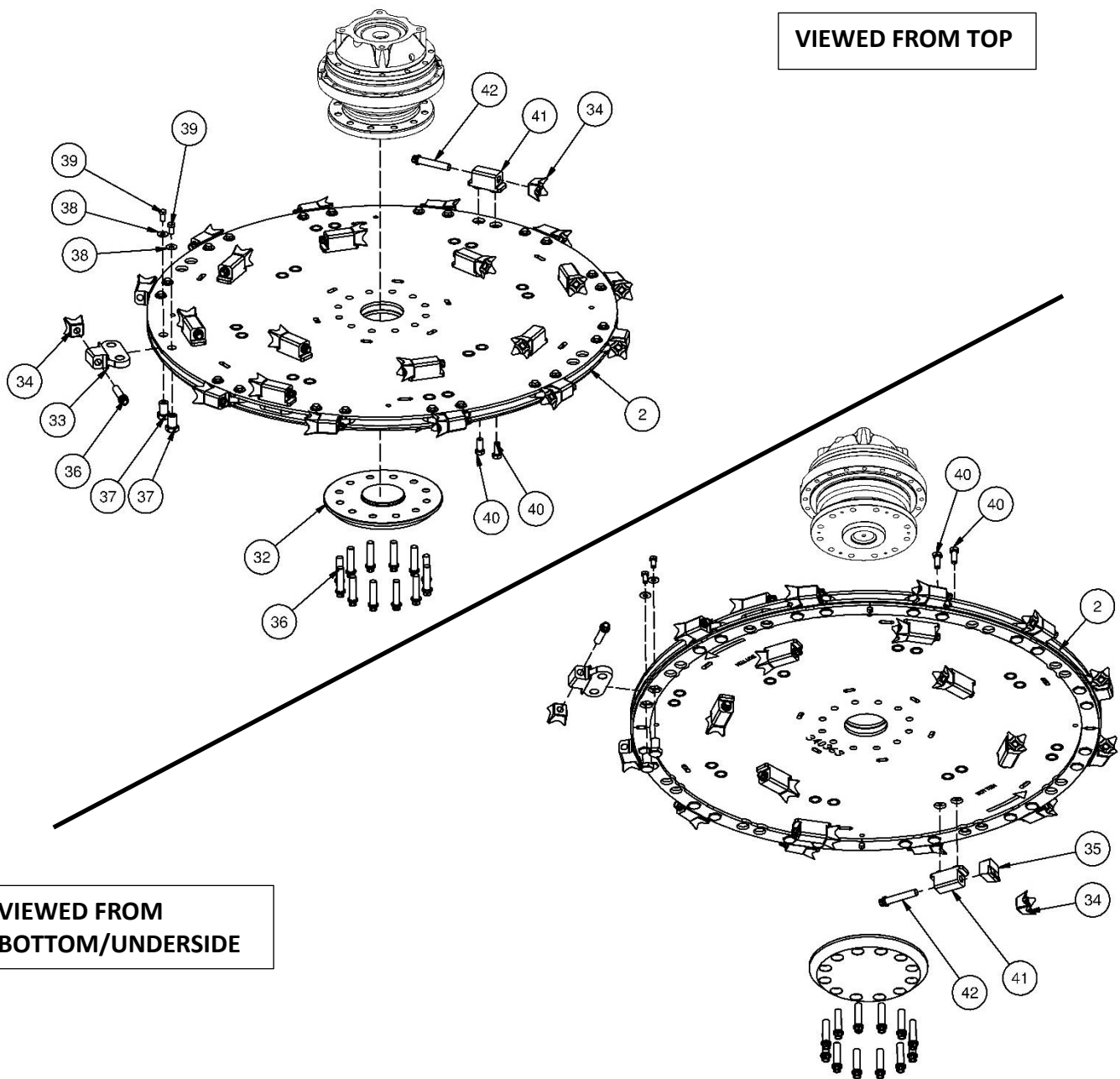
ITEM	QTY	PART NO.	DESCRIPTION	STOCK NO.
5	1	340311	COVER DECK MM W/A	
12	1	330864	HOLDER MANUAL CANISTER 12.5 X 2.25	
13	1	201405	PIN HITCH 5/8 X 2-3/4	
14	1	104410	PIN CLIP #9 5/32 X 3-1/16	
15	2	340319	HINGE STRAP 4.25 WIDE 8 BOLT	
17	18	37210	NUT REV LOCK	1/4 NC
18	2	21801	BOLT CARRIAGE	1/4 X 3/4 NC GR5
19	16	13003	BOLT HEX	1/4 X 3/4 NC GR 5
20	8	41125	RIVET 3/16 STEEL #64	

SHOWN WITHOUT PUSH BAR
PARTS FOR CLARITY



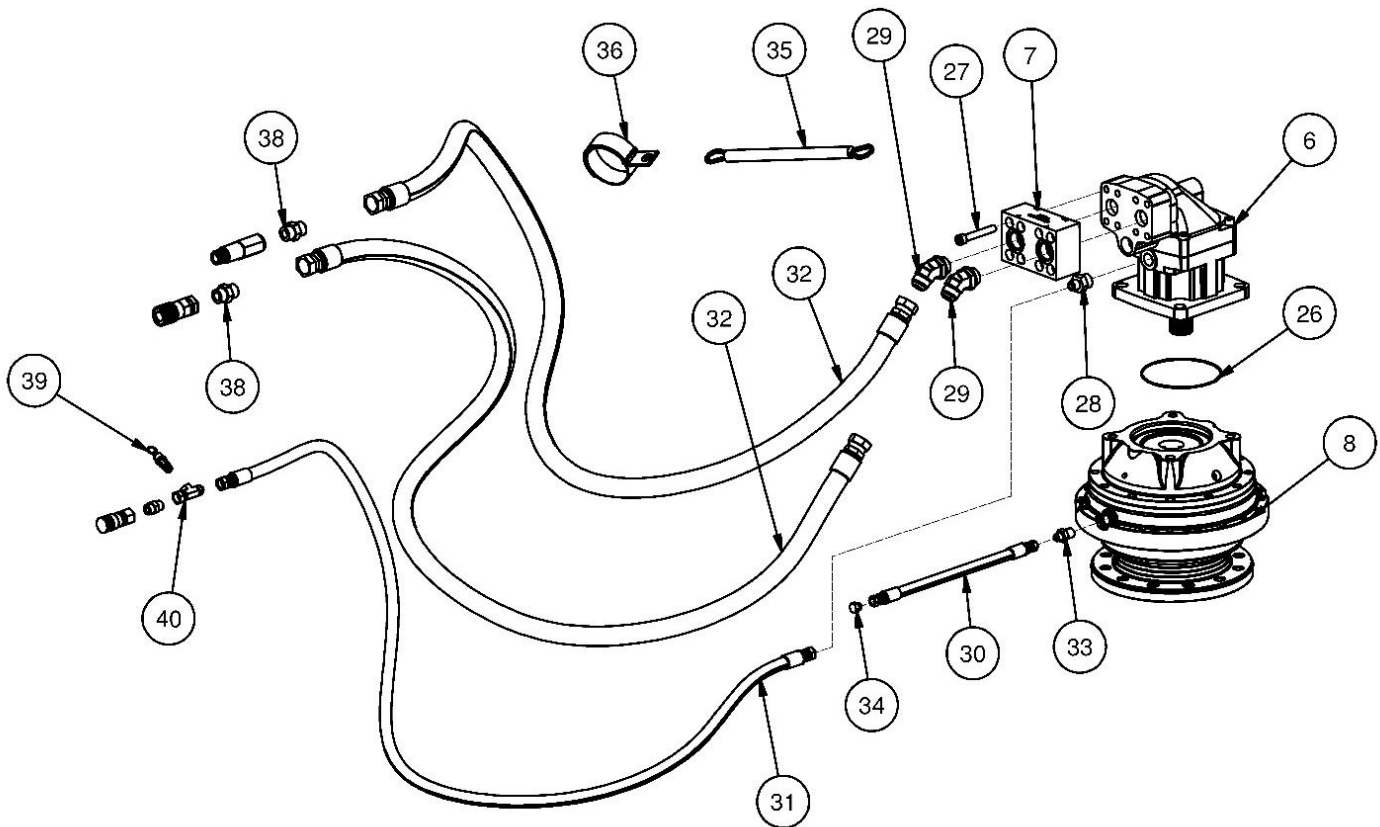
FORESTRY MULCHING MOWER PARTS INFORMATION

ITEM	QTY	PART NO.	DESCRIPTION	STOCK NO.
2	1	340207	DISC MULCHER 2 W/A	
32	1	340368	PLATE BOLT MACHINED 5"	
33	12	340228	HOLDER TOOTH BOLT ON EDGE	
34	22	340279	TOOTH FOUR POINT SHANKLESS	
35	8	340366	TOOTH CARBIDE SHANKLESS	PKG OPT TEETH CARBIDE
36	24	0161430	BOLT FLG 12PT 3/4-16 X 3	
37	24	340343	PIN 1 X 1.5 HEX HEAD THREADED	
38	24	33860	WASHER FLAT	7/16" HARDEND
39	24	18910	BOLT HEX	1/2 X 1 UNF GR 8 YZ
40	36	18958	BOLT HEX	5/8 X 1-1/2 NF GR 8 YZ
41	10	340229	HOLDER TOOTH BOLT ON TOP	
42	18	340351	BOLT FLG	12PT 3/4-16 X 4



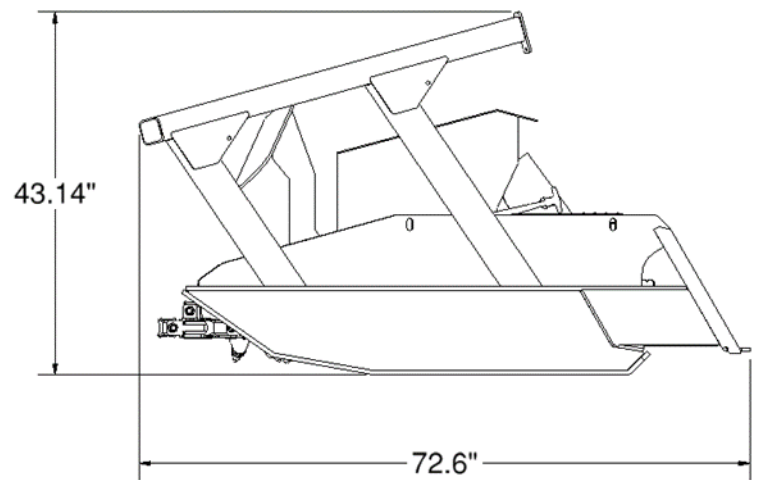
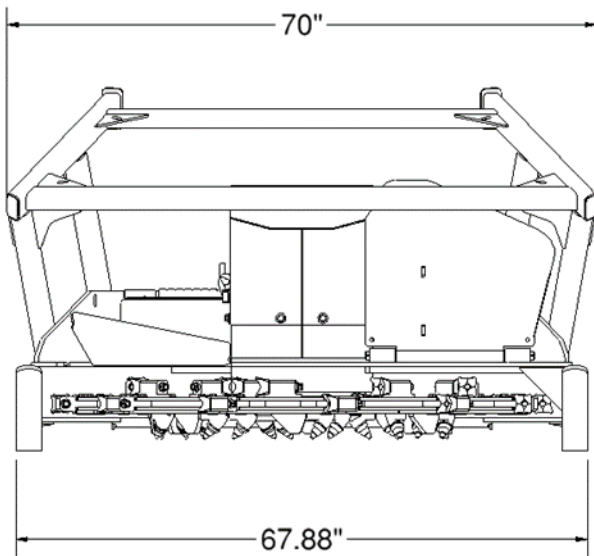
FORESTRY MULCHING MOWER PARTS INFORMATION

ITEM	QTY	PART NO.	DESCRIPTION	STOCK NO.
6	1	340210	MOTOR HYD PISTON 125CC	
7	1	340278	VALVE ASSM CHECK MM FIXED	
8	1	340365	CARRIER BEARING MULCHER 5"	110oz 80W/90
26	1	340266	O-RING 6" ID X 3/32 (2-163)	
27	8	23416	BOLT SHCS 1/2 X 3-1/4 NC BO	COMES WITH VALVE BLOCK
28	1	201524	ADPT STR 12MB-8MJ	
29	2	340348	ADPT ELB 16MB-16MJ-45	
30	1	340356	HOSE 3/8 X 16 6FJX-6FJX	
31	1	340208	HOSE 1/2 X 112 8FJX-8FJX	
32	2	340206	HOSE 1 X 106 16FJX-16FJX	
33	1	201515	ADPT STR 8MP-6MJ	
34	1	320063	ADPT PLUG 6MJ	
35	1	340334	STRAP ELASTIC 12"	
36	1	340335	STRAP HANGING CINCH 3.8-5.1 OD	
37	1	340353	WRAP HOSE PLASTIC 3.157 X 66 YEL	NOT SHOWN
38	2	340350	ADPT STR 16MJ-12FJ	PARTS ONLY
39	1	331384	ADPT STR 4MP RELIEF 225 PSI	CASE DRAIN
40	1	330990	ADPT TEE 8FJX-8MJ-4FP	CASE DRAIN



GENERAL SPECIFICATIONS

Model	Mulching Mower
Mounting Plate	Universal
Hydraulic Pump Capacity Requirements	32 to 45 GPM
System Pressure	3000 – 5000 psi
Cutting Width	60"
Cutting Teeth	12 edge, 10 top, 8 bottom
Cutting Capacity (depending on flow rate of loader)	Up to 14" diameter
Mulching Capacity (depending on flow rate of loader)	Softwood up to 6" diameter
Operating Weight	2700 lbs.



TROUBLESHOOTING

Problem	Possible Solution
Disc turns in wrong direction	<ul style="list-style-type: none"> • Contact Erskine Attachments LLC
Disc gets plugged with debris	<ul style="list-style-type: none"> • Make sure loader throttle is set to 100% while working • Make sure loader auxiliary flow is set to HIGH FLOW • Ensure maximum disc RPM is attained before mulching. • Reduce the amount of material you try to mulch at one time. • Rotate (or replace) dull teeth to expose sharp edges.
Hydraulic system overheating	<ul style="list-style-type: none"> • Check that loader cooling fan is operating correctly. • Clean debris from radiator screen • Clean radiator with compressed air or flush with water • Reduce system work load by slowing the work pace • Periodically stop work to allow system to cool. • Add auxiliary oil cooler sold by third party • Contact your dealer
Excessive vibration	<ul style="list-style-type: none"> • Check for debris lodged between the teeth • Check teeth and disc for damage • Contact your dealer

LIMITED WARRANTY

Erskine Attachments LLC warrants each new machine manufactured by us to be free from defects in material and workmanship for a period of twenty-four (24) months from date of delivery to the original purchaser.

Our obligation under this warranty is to replace free of charge, at our factory or authorized dealership, any part proven defective within the stated warranty time limit.

All parts must be returned freight prepaid and adequately packaged to prevent damage in transit.

This warranty does not cover:

1. New products which have been operated in excess of rated capacities or negligence
2. Misuse, abuse, accidents or damage due to improperly routed hoses
3. Machines which have been altered, modified or repaired in any manner not authorized by our company
4. Previously owned equipment
5. Any ground engaging tools in which natural wear is involved, i.e. tooth tips, cutting teeth, etc.
6. Normal maintenance
7. Fork tines
8. Hydraulic motors that have been disassembled in any manner

In no event will the Sales Representative, Dealership, Erskine Attachments LLC, or any other company affiliated with it or them be liable for incidental or consequential damages or injuries, including but not limited to the loss of profit, rental or substitute equipment or other commercial loss. Purchaser's sole and exclusive remedy being as provided here in above.

Erskine Attachments LLC must receive immediate notification of defect and no allowance will be made for repairs without our consent or approval.

This warranty is in lieu of all other warranties, express or implied by law or otherwise, and there is no warranty of merchantability or fitness purpose.

No agent, employee, or representative of Erskine Attachments LLC has any authority to bind Erskine Attachments LLC to any warranty except as specifically set forth herein. Any of these limitations excluded by local law shall be deemed deleted from this warranty; all other terms apply.

This warranty may not be enlarged or modified in any manner except in writing signed by an executive officer of Erskine Attachments LLC to improve its products whenever it is possible and practical to do so. Erskine Attachments LLC reserves the right to make changes and or add improvements at any time without incurring any obligation to make such changes or add such improvements to products previously sold.

Erskine Attachments LLC
P.O. Box 1083 Alexandria, MN 56308
Phone (218) 435-4045 Fax (218) 435-5293



P/N 340354
Erskine Attachments LLC

Date Printed: 12/16/2022

Printed in U.S.A.