

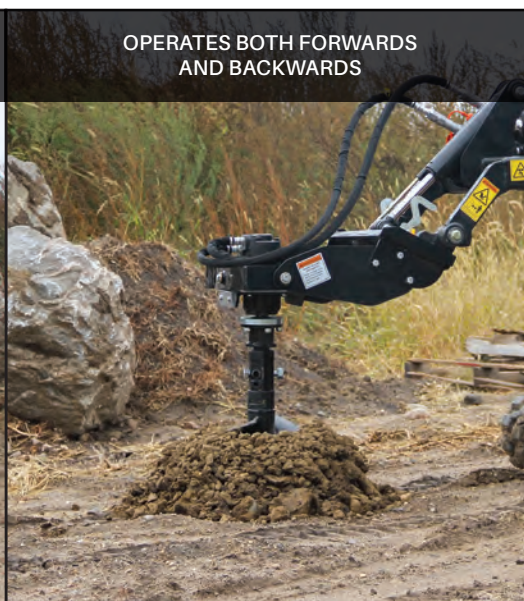
# Mini Earth Auger



The powerful Mini Earth Auger units are durable enough to withstand any construction or utility use in even the toughest ground conditions. Available in direct-drive or planetary drive options that offer reverse rotation for cleaning of the hole.



AUGER BITS AVAILABLE IN STANDARD AND HEAVY-DUTY



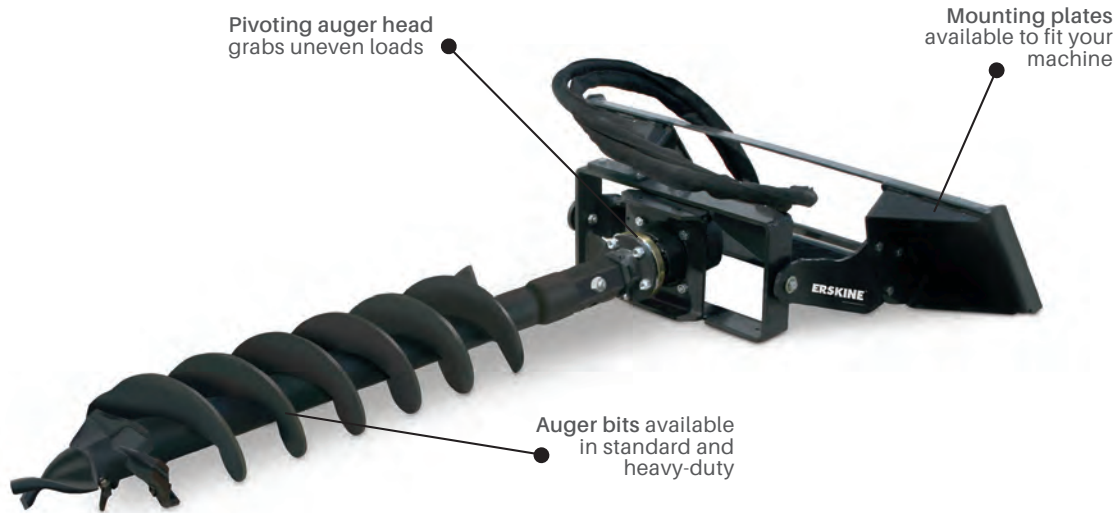
OPERATES BOTH FORWARDS AND BACKWARDS



REVERSE ROTATION CLEANS THE BIT WITH EASE



Take a Picture of This QR Code With Your Smart Phone to See it in Action



## FEATURES & BENEFITS

- Direct-drive design or planetary drive design
- 2" hex head
- Auger head pivots front to back and side to side
- Pivot side to side has a locking method provided

## SPECIFICATIONS / OPTIONS

Model	Mini	11PD	14PD	18PD
Part Number (ASV RC30)	900752	N/A	N/A	N/A
Part Number (Toro)	900752	901320	901321	901322
Part Number (Bobcat)	900752	901326	901327	901326
Weight	400 lb.	200 lb.	203 lb.	206 lb.
Maximum Diameter	30"	24"	30"	36"
Minimum Hydraulic Flow	7 GPM	6 GPM	10 GPM	15 GPM
Maximum Hydraulic Flow	16 GPM	12 GPM	20 GPM	25 GPM
Maximum Continuous psi	3,000 psi	3,500 psi	3,500 psi	3,500 psi

### Mounting Kit Configurations

ASV/Terex (RC/PT30)

Bobcat (MT-52/55, 463/S70)

Toro / Vermeer / Boxer / Ditch Witch / Ramrod / Kanga / Cormidi

Universal Mounting Plate (up to 1,000 lb. ROC and within rated flow)

### Options

Choose from standard or heavy-duty auger bits

Direct-drive or planetary drive

\* For more specification details please see our website [www.erskineattachments.com](http://www.erskineattachments.com)

MINI SKID STEER