

# V-Plow



The V-Plow puts you in position for highly productive snow removal. V, scoop, left and right positions allow you maximum maneuverability. Built in oscillation of +/- 5 degrees follows the contour of the surface eliminating second pass clean-up. This attachment is engineered for quality from the ground up.



STRAIGHT POSITION



V POSITION

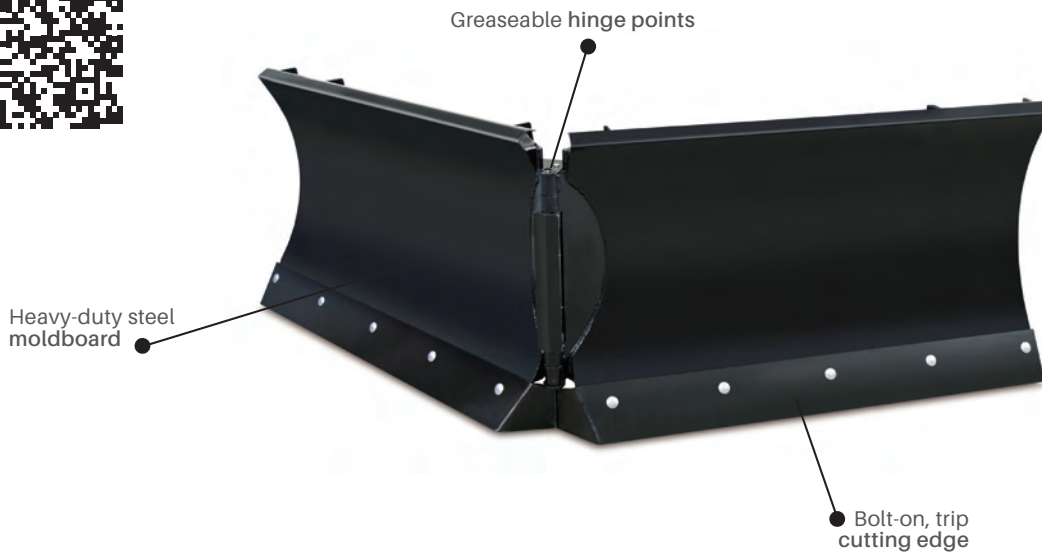


ANGLED POSITION





Take a Picture of This QR Code With Your Smart Phone to See it in Action



**SKID STEER**

## FEATURES & BENEFITS

- Trip edge utilizing four extension springs
- Two-way hydraulic only control provides full moldboard control in V, scoop, left and right positions
- 2" bore x 10" stroke cylinders with 1 1/4" rods and 1 1/4" cylinder pins
- + or - 5 degree's of oscillation to follow contours of the ground
- Floating moldboard and adjustable cast skid shoes
- Central cutting edge bracket is designed to block snow from passing through the blade hinge point

## SPECIFICATIONS / OPTIONS

Model	84"	96"	108"
Part Number	901613	901614	901615
Straight Blade Width	86"	98"	110"
Angled Blade Width	69"	79"	89"
V Position Width	75"	85"	96"
Scoop Position Width	63"	73"	81"
Blade Height	31.8"	31.8"	31.8"
Blade Angle	+/- 36°	+/- 36°	+/- 36°
Amount of Float	+/- 2.5°	+/- 2.5°	+/- 2.5°
Overall Length	41.75"	41.75"	41.75"
Moldboard Thickness	.135"	.135"	.135"
Bolt-on Cutting Edge	1/2" x 6"	1/2" x 6"	1/2" x 6"
Weight	1,000 lb.	1,050 lb.	1,100 lb.

### Options

Factory Installed Couplers

\* For more specification details please see our website [www.erskineattachments.com](http://www.erskineattachments.com)

\* For more specification details please see our website [www.erskineattachments.com](http://www.erskineattachments.com)