

Vibratory Packer



Compact flatwork, trenches and asphalt patching jobs while moving forward or in reverse. Offset drum design compacts next to sidewalks, walls or curbs. Drum oscillation keeps the roller in contact with the surface on uneven terrain.



OFFSET DRUM DESIGN ALLOWS THE RIGHT SIDE OF THE ROLLER TO EXTEND PAST THE MACHINE



SOLID SHAFT IS EQUIPPED WITH 4 GREASEABLE BEARINGS

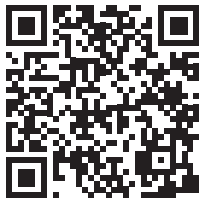


DUAL-DIRECTION VIBRATION MOTOR PERMITS COMPACTION TRAVELING IN EITHER DIRECTION



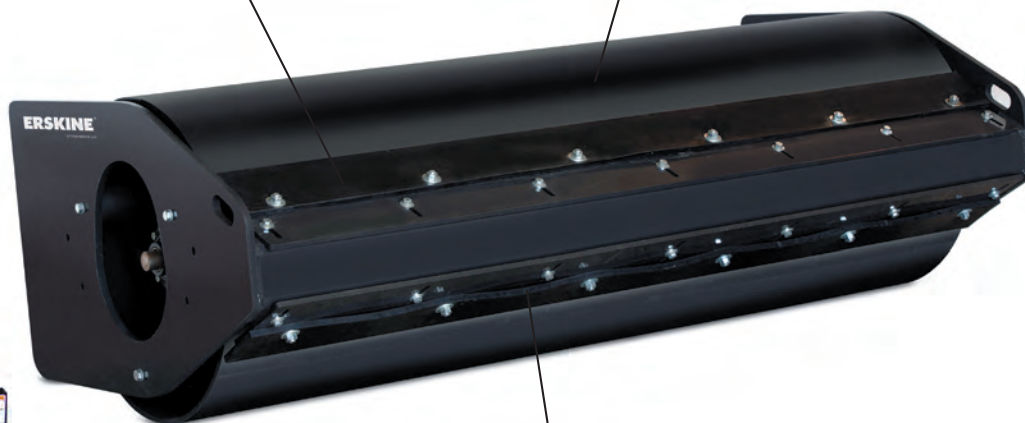


Take a Picture of This QR Code With Your Smart Phone to See it in Action



Polyurethane 1/2" thick adjustable scraper keeps drum clean

A-500 grade steel drum



Additional scraper for reverse compaction



Padded Foot

SKID STEER

FEATURES & BENEFITS

- Offset drum design allows the right side of the roller to extend 6 inches past the machine. This is very useful when compacting next to sidewalks, walls, or curbs
- Durable one-piece drum for extra strength
- Dual-direction vibration motor permits compaction traveling in either direction
- Drum rubber isolation mounts reduce vibration transfer to loader and operator
- Solid shaft running the full length of the drum is equipped with 4 greaseable bearings

SPECIFICATIONS / OPTIONS

Model	72 Smooth	72 Padded Foot
Part Number	900722	900723
Weight	1,950 lb.	2,050 lb.
Height	24"	27.5"
Width	84"	84"
Length	42"	42"
VPM	2,000 @ 18 GPM	2,000 @ 18 GPM
Flow Range	11-22 GPM	11-22 GPM
Dynamic Force	4,150 lb.	4,100 lb.
Amplitude	.06"	.05"
Compacting Energy	80 lb./in.	290 lb./in.
Oscillation	+/- 15°	+/- 15°
Case Drain	Required	Required
Options		
Case Drain Coupler		
Factory Installed Couplers		

* For more specification details please see our website www.erskineattachments.com

* For more specification details please see our website www.erskineattachments.com